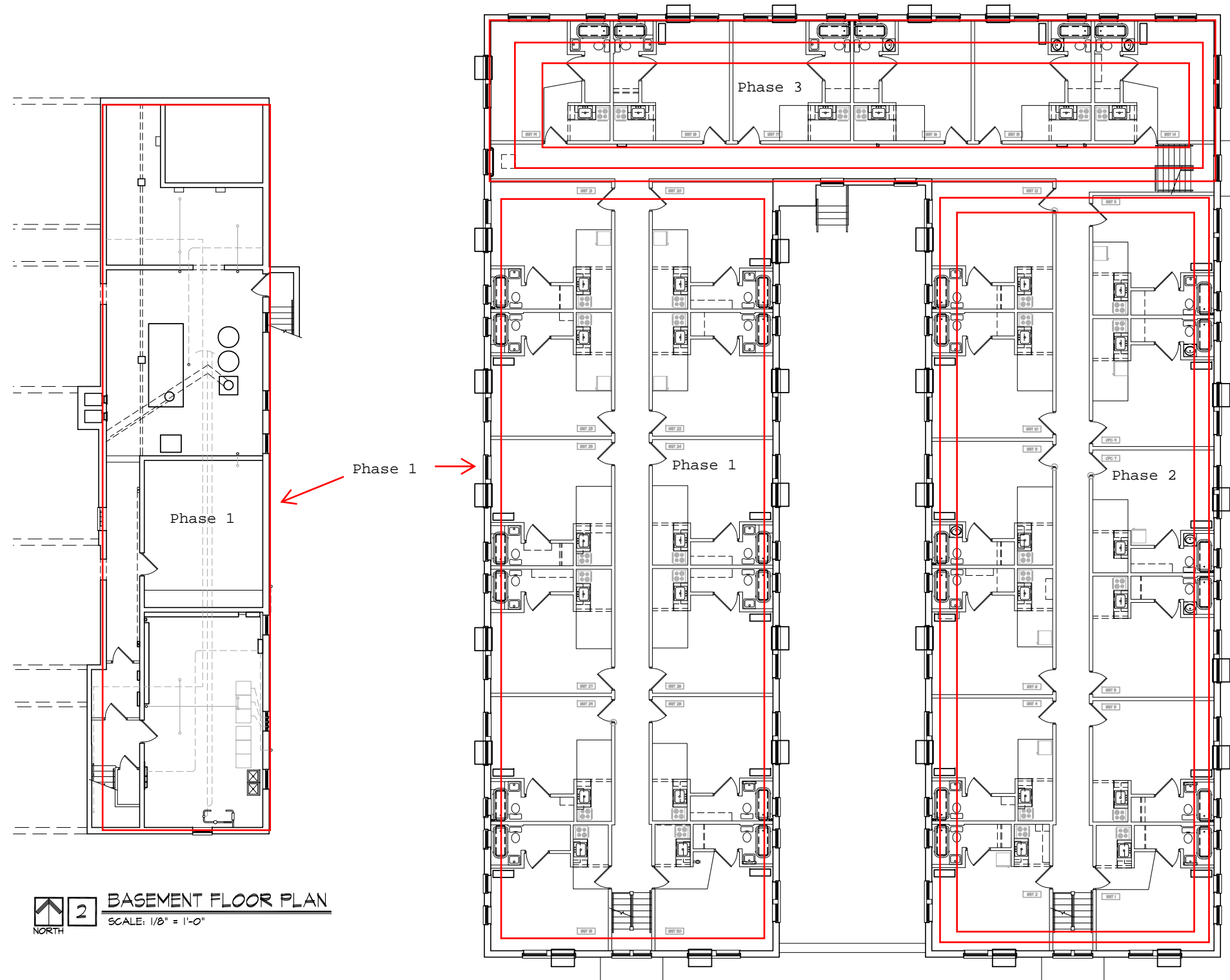


Three Phase Option  
 Phase 1 = 24 Apartments plus Basement  
 Phase 2 = 24 Apartments  
 Phase 3 = 12 Apartments  
 Total = 60 Apartments



**2** BASEMENT FLOOR PLAN  
 SCALE: 1/8" = 1'-0"

**1** OVERALL SECOND FLOOR PLAN  
 SCALE: 1/8" = 1'-0"



100 SHILLY STREET  
 INDIANAPOLIS, INDIANA 46202 USA  
 TEL: 317.294.1921 FAX: 317.294.1400  
 NET: WWW.HAISTEAD-ARCHITECTS.COM

CERTIFIED BY:  
**PRELIMINARY  
 NOT FOR  
 CONSTRUCTION**

REFURBISHMENT OF  
**ST. GEORGE APARTMENTS**  
 2101 BOULEVARD PLACE  
 INDIANAPOLIS, INDIANA 46207  
 CENTER TOWNSHIP  
 MARION COUNTY

DRAWING **OVERALL  
 SECOND FLOOR &  
 BASEMENT PLAN**

ISSUE  
 EXISTING DWGS. -- 04/23/10

REVISIONS	
1	---
2	---
3	---
4	---

PROJECT NO. **1009**

DATE **APRIL 27, 2010**

DRAWING NO.

**A1.2**