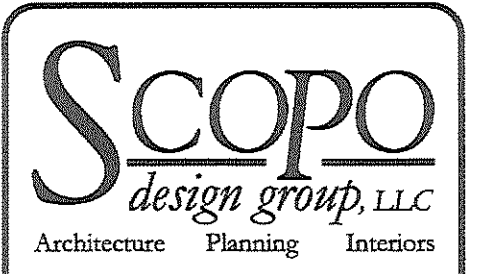
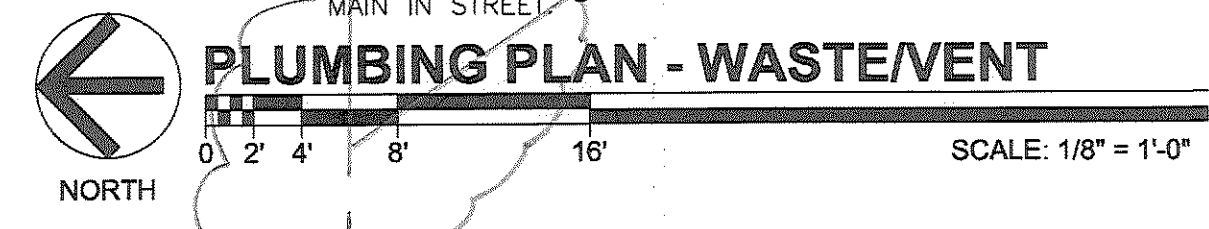
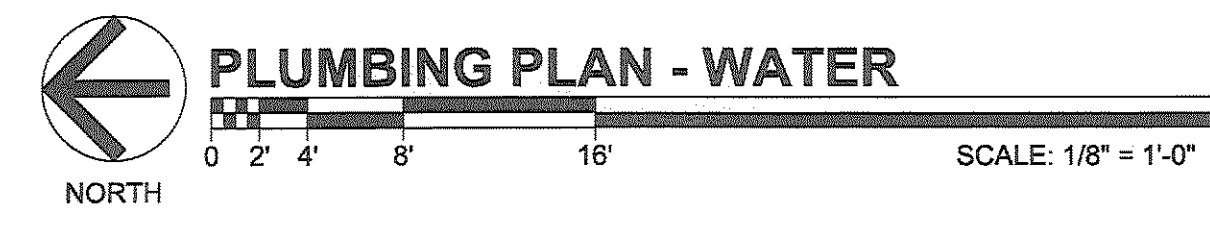
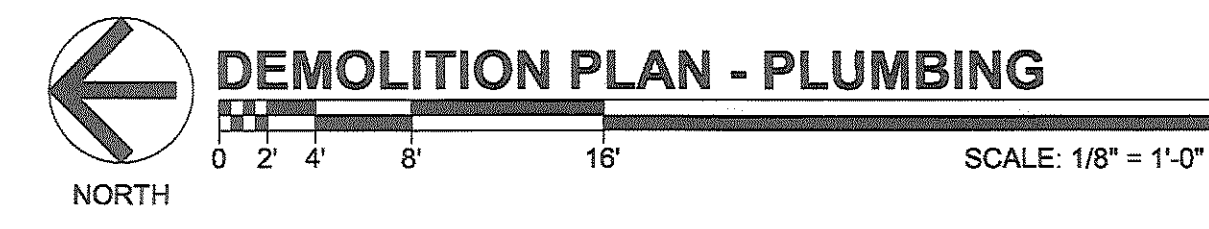


KEY NOTES

- 1 WATER HEATER (WH-1) ON SHELF OVER MOB BASIN (MB-1).
- 2 PLUMBING CONTRACTOR SHALL VERIFY IN FIELD EXACT LOCATION OF INCOMING DOMESTIC WATER SERVICE.
- 3 GREASE INTERCEPTOR SIZING:
 $S * GS * (HR/12) * LF$
 WHERE S = NUMBER OF SEATS
 WHERE GS = GALLON OF WASTE PER SEAT (USE 10 w/ PAPER OR BASKETS)
 WHERE HR = NUMBER OF HOURS OPEN
 WHERE LF = LOAD FACTOR (USE 0.75 FOR OTHER HIGHWAY)
 $26 * 10 * (1/2) * 0.75 = 146.25$ GALLON CAPACITY
- 4 GREASE INTERCEPTOR SIZED TO HANDLE POTENTIAL FUTURE EXPANSION.

DEMOLITION NOTES

- 1 PLUMBING CONTRACTOR SHALL SAW CUT EXISTING CONCRETE FLOOR. CONTRACTOR SHALL REMOVE DEBRIS FROM JOB SITE.
- 2 PLUMBING CONTRACTOR SHALL PATCH CONCRETE FLOOR TO MATCH EXISTING CONDITIONS.



1930 San Marco Blvd., Suite 203
 Jacksonville, Florida 32207
 T 904 253 3902 F 904 253 3906
 www.scopodesigngroup.com
 AA26001292

PROJECT ENGINEER
 DARYL A. BRYAN, PE

FLORIDA LICENSE NO. 65272



THE OHMEGA GROUP
 CONSULTING ENGINEERS
 1400 SAN MARCO BLVD
 JACKSONVILLE, FLORIDA 32207
 T: (904) 807-6512 F: (904) 807-6550
 WWW.OHMEGAGROUP.COM
 FLORIDA CDA NO. 25911
 ELECTRICAL ENGINEER: MARK A. MORLEY, PE
 MECHANICAL ENGINEER: DARYL A. BRYAN, PE
 FLORIDA PE NO. 59813 FLORIDA PE NO. 65272

PROJECT TEAM

OWNER
 COMMUNITY REHABILITATION CENTER
 904-358-1211

LANDLORD
 PEARL PLAZA PARTNERS, LLC
 904-537-6186

ARCHITECT
 SCOPO DESIGN GROUP, LLC
 904-253-3902

M/E/P ENGINEER
 THE OHMEGA GROUP, LLC
 904-807-6512

DATE	ISSUE
08 JUL 2008	PERMIT

EXISTING CONDITIONS
CRC SANDWICH SHOP
 PEARL PLAZA SHOPPING CENTER
 5323 SPRINGFIELD AVENUE
 JACKSONVILLE, FLORIDA 32208

PLUMBING FLOOR PLANS

PROJECT NO: 00158-0708
 DRAWN BY: DAB
 CHECKED BY: MAM
 SHEET NO:

P2.1
 SHEET

Scopo Design Group, LLC. hereby expressly reserves the rights to this drawing and it is not to be reproduced or copied in any format or manner whatsoever without first obtaining permission and consent.