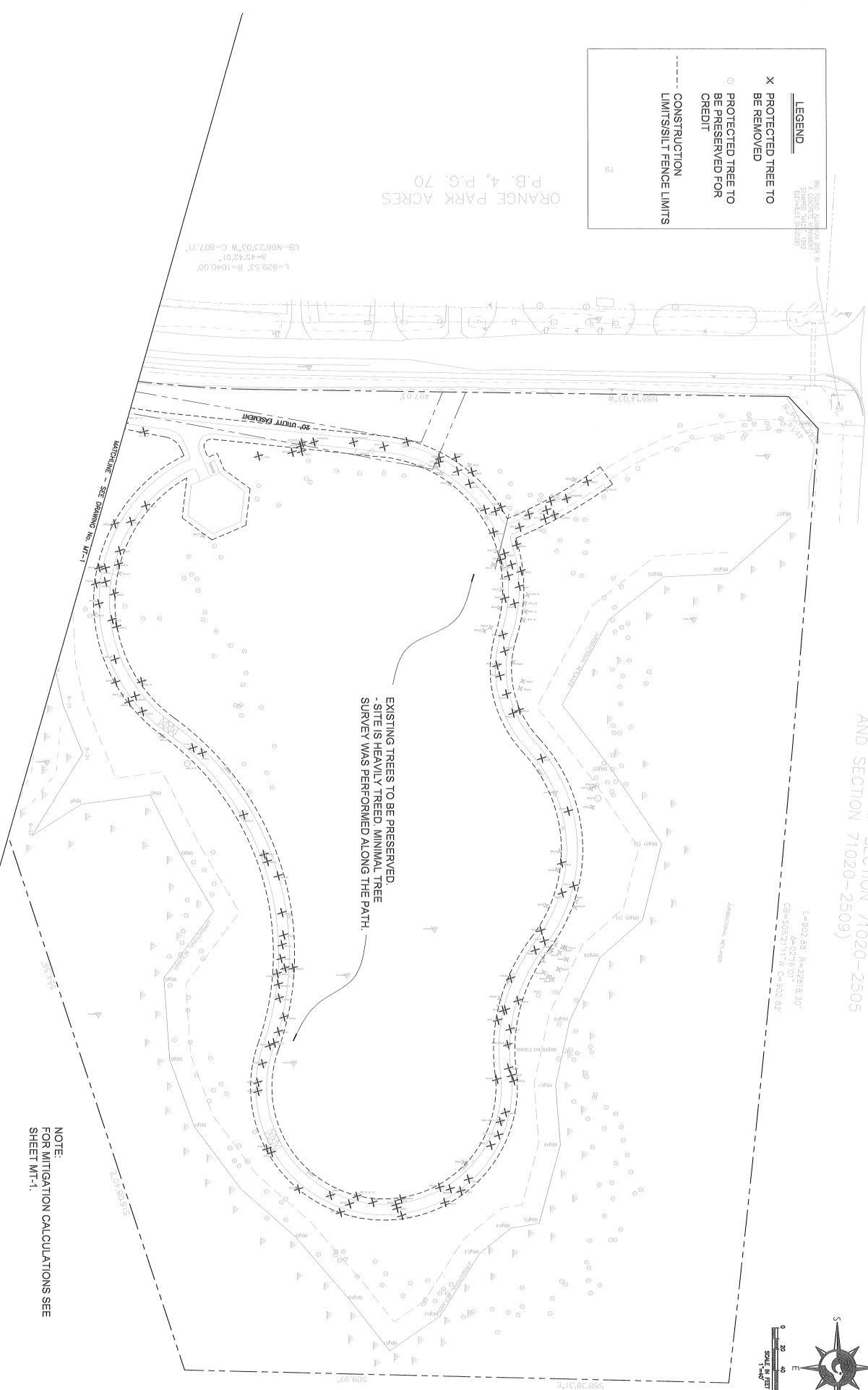


AND PER SRD R/W MAP SECTION 71020-2505
AND SECTION 71020-2509

LEGEND

- X PROTECTED TREE TO BE REMOVED
- PROTECTED TREE TO BE PRESERVED FOR CREDIT
- CONSTRUCTION LIMITS/SILT FENCE LIMITS



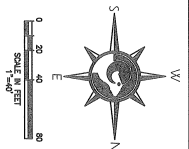
894.7000, 844.0000, 894.7000
STATION ELEVATION
ELEVATION (METERS)

L=800.68' R=2268.30'
Δ=02°16'53"
CB=509211' W=0=922.82'

ORANGE PARK ACRES
P.B. 4, P.G. 70

EXISTING TREES TO BE PRESERVED.
- SITE IS HEAVILY TREED. MINIMAL TREE
SURVEY WAS PERFORMED ALONG THE PATH.

NOTE:
FOR MITIGATION CALCULATIONS SEE
SHEET MT-1.



NO.	BY	DATE	REVISIONS	NO.	BY	DATE	REVISIONS
1				1			
2				2			
3				3			
4				4			
5				5			
6				6			
7				7			
8				8			
9				9			
10				10			

DESIGNER	XT	DATE	JAN 2008
DRAWN BY	JAL	DATE	JAN 2008
CHECKED BY	JAL	DATE	JAN 2008
APPROVED BY		DATE	

<p>THE MIAMI PROFESSIONAL GROUP, INC. 2000 BAYVIEW BLVD., SUITE 1000 MIAMI, FL 33139 FRANK H. CHILD III, R.L.A., P.L.A. REG. NO. 1309</p>	<p>CLAY COUNTY PARKS AND RECREATION DEPARTMENT</p>	<p>PROJECT NO.: 208-005-04 DATE: JANUARY, 2008 SCALE: 1" = 40'</p>	<p>TREE MITIGATION PLAN & TABLES MOCCASSIN SLOUGH PARK SHEET NO. MT-2</p>
---	--	--	---