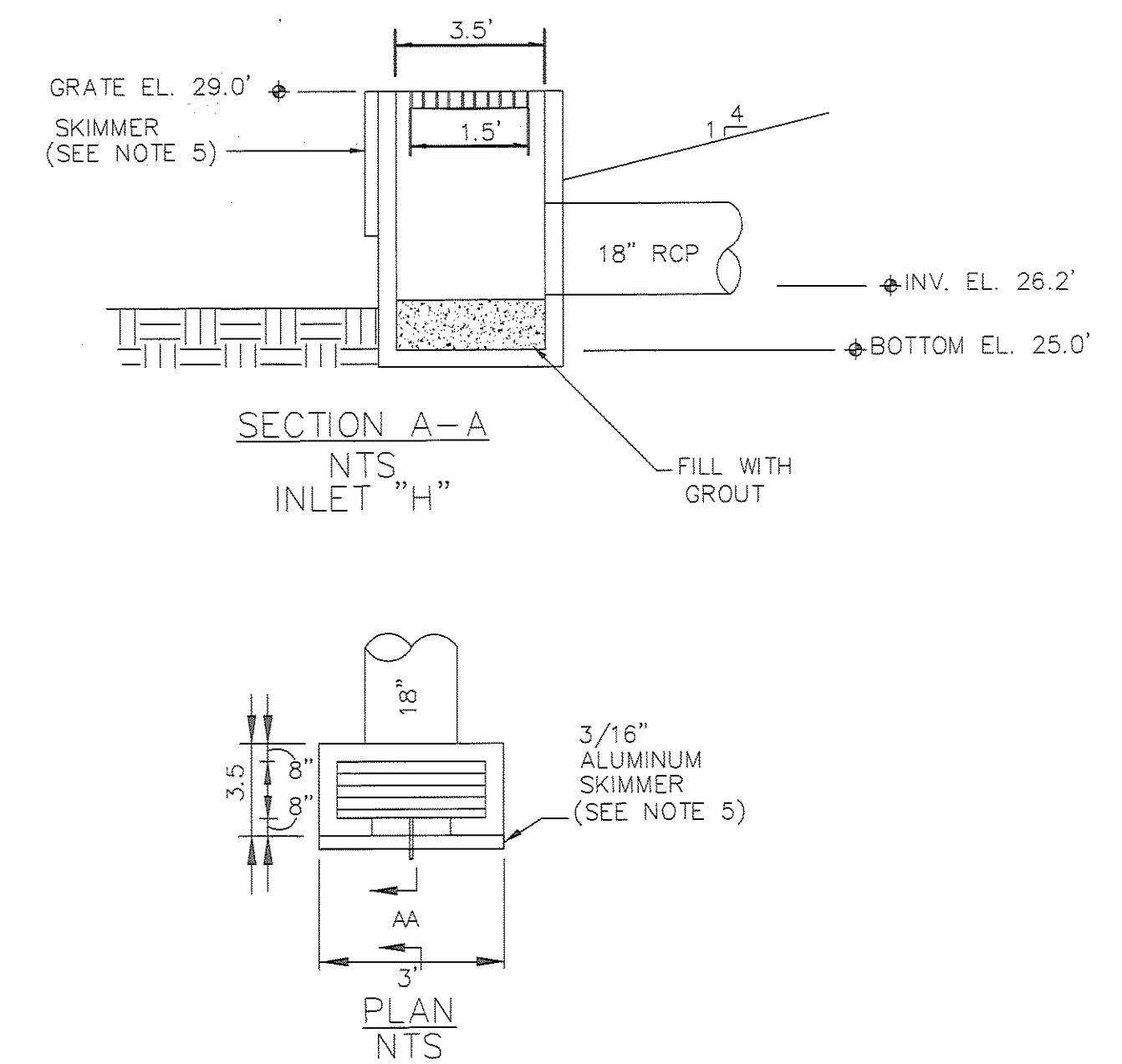


STRUCTURE TABLE						
INLET ID	DESCRIPTION	UPSTREAM INVERT	DOWNSTREAM INVERT	TOP OF GRATE ELEVATION	PIPE LENGTH	PIPE TYPE
A	GRATE INLET	26.45	26.35	29.7	37 FT	15" RCP
B	TYPE F INLET	26.35	26.15	28.8	64 FT	15" RCP
C	TYPE F INLET	26.15	26.0	28.8	50 FT	15" RCP
D	FLARED END SECTION	26.3	-	N/A	-	-
E	STEEL CURB INLET	26.3	26.1	28.8	54 FT	15" RCP
F	STEEL CURB INLET	26.1	26.0	28.7	30 FT	15" RCP
G	FLARED END SECTION	26.0	-	N/A	-	-
H	WEIR INLET STRUCTURE	27.2	-	29.0	16 FT	18" CMP
I	MITERED END SECTION	27.0	-	-	-	-
J	MITERED END SECTION	25.75	-	N/A	50 FT	24" RCP
K	TYPE C INLET	25.70	25.65	28.5	50 FT	24" RCP
L	VOID	-	-	N/A	-	-
M	MITERED END SECTION	25.65	-	N/A	-	-

**GENERAL NOTES:**

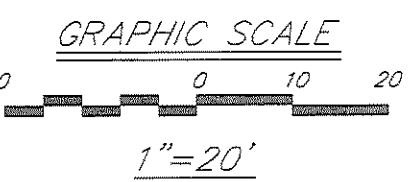
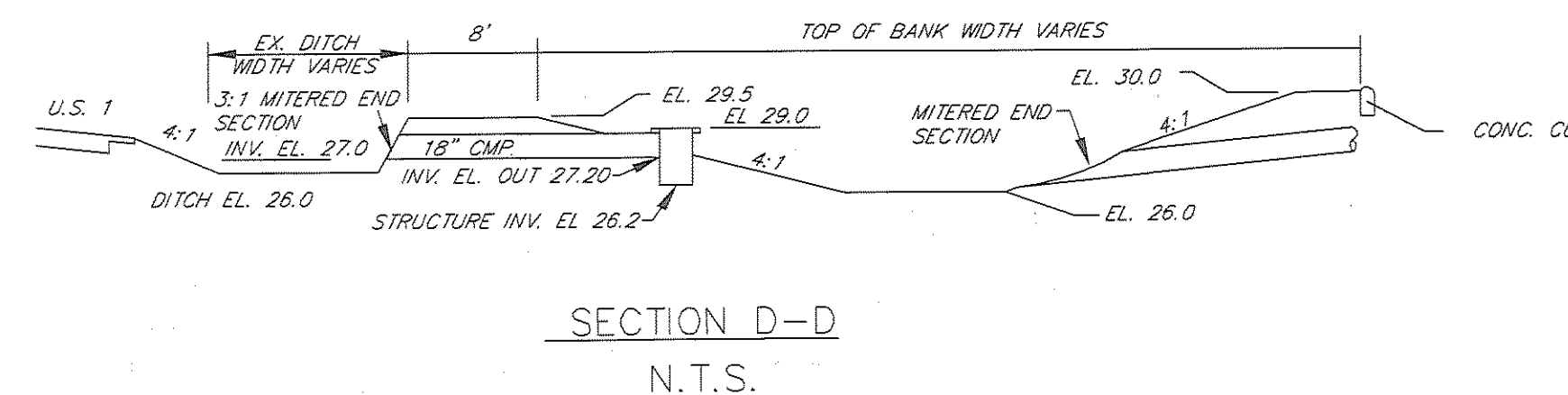
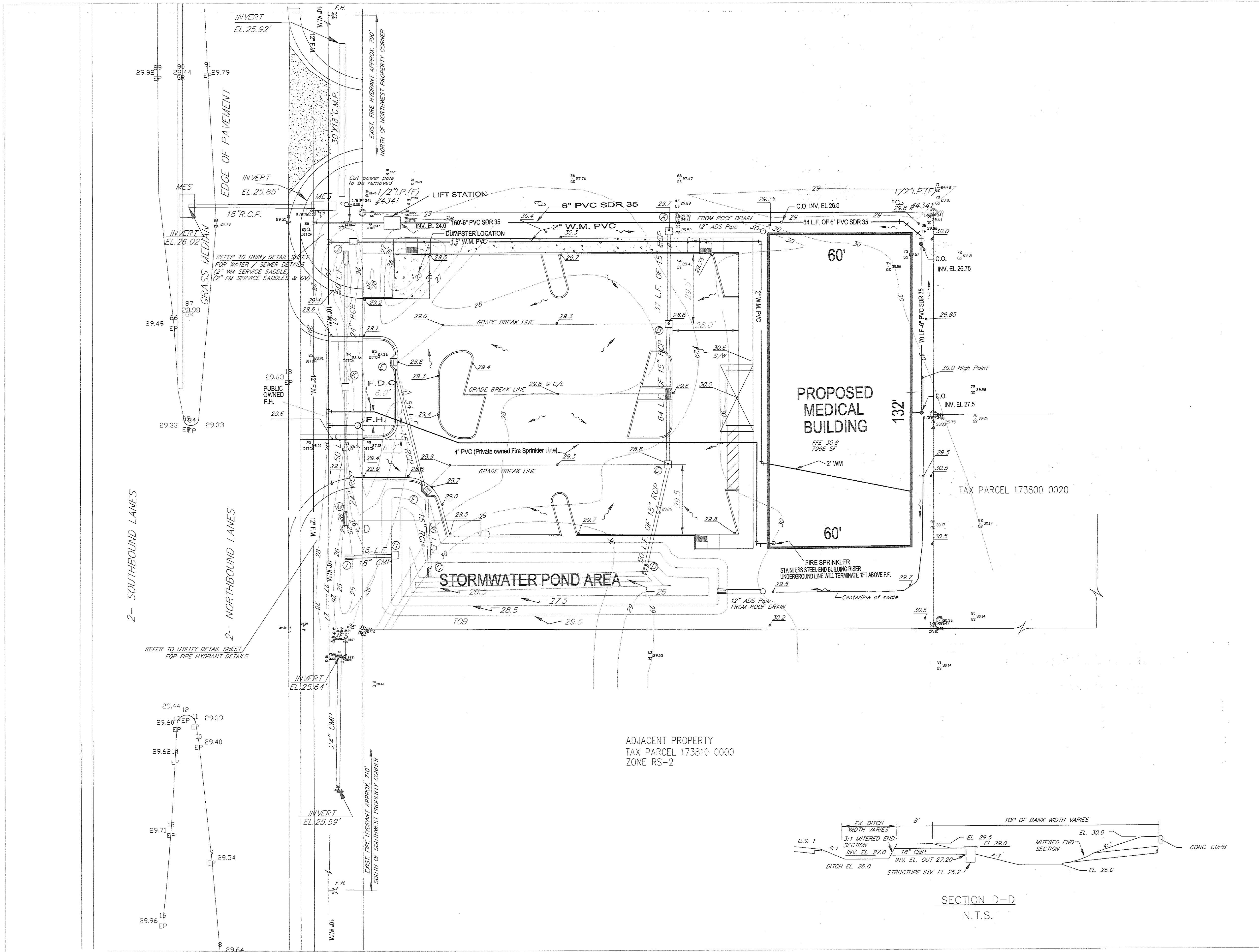
- DRAINAGE STRUCTURES TO MEET FLORIDA DEPARTMENT OF TRANSPORTATION STRUCTURAL REQUIREMENTS FOR A TRAFFIC BEARING GRATE INLET.
- POND TO BE SODDED AND STAKED.
- CONTRACTOR TO PROVIDE SINGLE 1.5" WATER SERVICE METER TO BUILDING AT PROPERTY LINE AS REQUIRED BY ST. JOHNS COUNTY UTILITY DEPARTMENT.
- CONTRACTOR TO CONFIRM SET GRADES WILL PROVIDE INTENDED FLOW PATTERNS.
- REFER TO FDOT INDEX NOS. 232, 233, 270, 273 AND 280 FOR TYPE G, E, F INLETS, FES, MES AND DITCH PAVING.
- CONTRACTOR TO INSTALL SILT FENCE PRIOR TO CLEARING LOT (SEE DETAIL SHEET)
- CONTRACTOR TO SOD AROUND MES AND FDOT DITCH.



POND OVERFLOW STRUCTURE

**NOTES**

- PIPES MUST NOT BE IN CONSTRUCTION JOINTS.
- PIPES SHALL BE FLUSH WITH INSIDE WALL.
- MIN. CONC. DESIGN STRENGTH: 4000 PSI.
- STRUCTURE IS A TYPE E INLET, MODIFIED AS SHOWN, SEE DETAIL ABOVE FOR TYPE E INLET.
- SKIMMER; TOP ELEV. 29.0, BOTTOM ELEV. 28.0.
- WEIR ELEV. 28.5 (width of Weir 18 inches)



<b>REVISIONS</b> 1. Added spot elevations for grading around building	<b>SURVEY DATA:</b> SURVEYED GRADES CHECKED BENCHMARKS	<b>BOOK NO.</b> NF Devino and Ass.-07-23-05	<b>DESIGNER:</b> RFH <b>DRAWN BY:</b> DE <b>CHECKED BY:</b> RFH <b>DATE:</b> 2/27/07	<b>DESIGN ENGINEER</b> RONALD F. HOODLAND FLORIDA REGISTRATION NO. 45247	<b>OWNER</b> <b>KP MEIRING COMPANY</b> 1715 Lakeside Ave #5 ST. AUGUSTINE FL. 32084	<b>PROJECT NO.</b> km-001 <b>DATE:</b> 2/27/07 <b>SCALE:</b> 1"=20'	<b>LIGHT HOUSE MEDICAL BUILDING</b> <b>GRADING AND UTILITY PLAN</b>	<b>NO. SHEETS</b> 6 <b>SHEET NO.</b> 4 <b>DRAWING NO.</b>
--	---	---	---	---	--	--	--	---