



This side of the slab is lower than the other side.

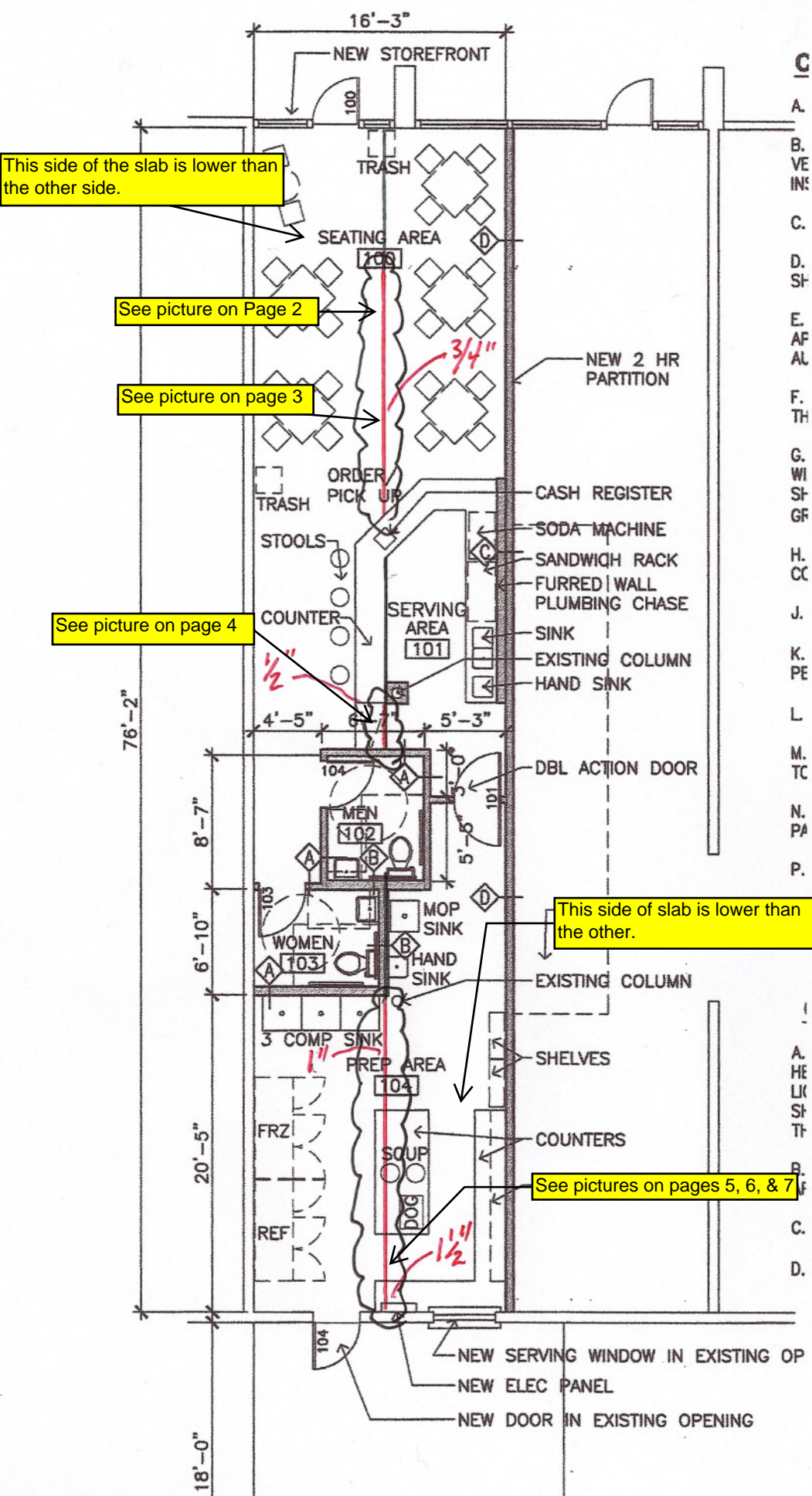
See picture on Page 2

See picture on page 3

See picture on page 4

This side of slab is lower than the other.

See pictures on pages 5, 6, & 7



- C
- A.
- B.
- VE
- IN:
- C.
- D.
- SH
- E.
- AF
- AL
- F.
- TH
- G.
- WI
- SH
- GF
- H.
- CC
- J.
- K.
- PE
- L
- M.
- TC
- N.
- PA
- P.

- A.
- HE
- LI
- SH
- TF
- B.
- C.
- D.











