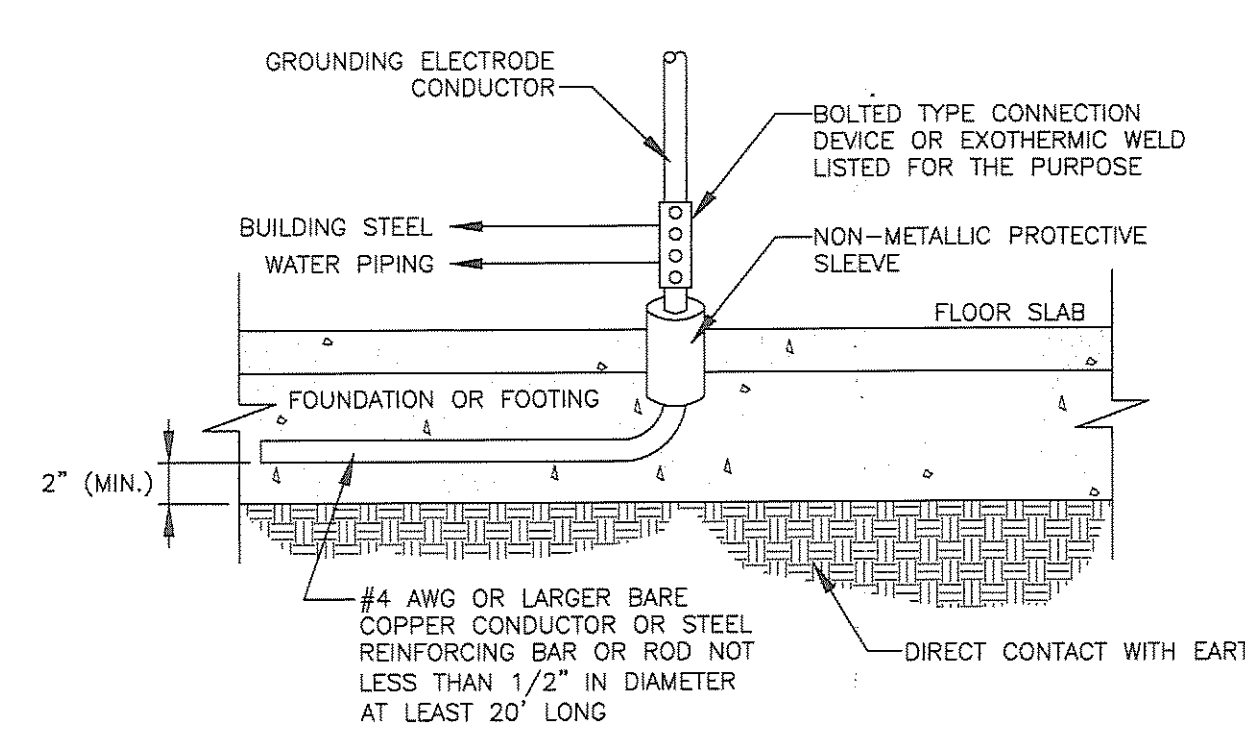


ELECTRICAL RISER DIAGRAM
SCALE: NONE



SERVICE GROUNDING DETAIL
SCALE: NONE

GENERAL NOTES

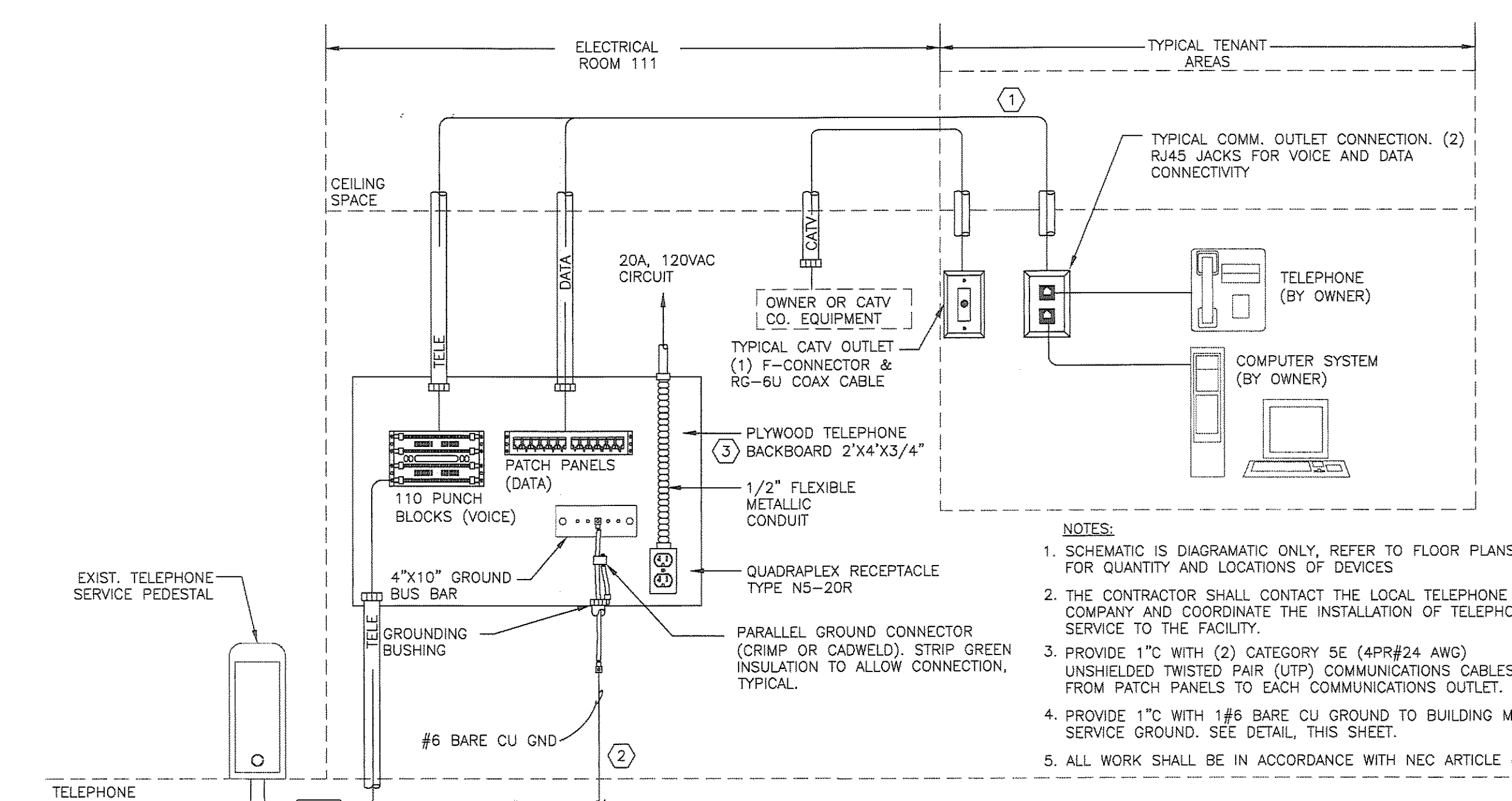
- ALL ELECTRICAL WORK SHALL COMPLY WITH THE LATEST EDITIONS OF THE NATIONAL ELECTRICAL CODE, FIRE SAFETY CODES, ENERGY CODES, THE AMERICANS WITH DISABILITIES ACT, AND LOCAL BUILDING CODES.
- THE CONTRACTOR SHALL THOROUGHLY REVIEW THE PROJECT SITE TO ENSURE THAT ALL WORK WILL MEET OR EXCEED THE ABOVE REQUIREMENTS. ANY ALLEGED DISCREPANCIES SHALL BE BROUGHT TO THE A/E'S ATTENTION.
- THE CONTRACTOR SHALL VISIT THE SITE TO DETERMINE EXISTING CONDITIONS PRIOR TO SUBMITTING BID.
- MANUFACTURER AND MODEL NUMBERS ARE USED TO ESTABLISH QUALITY AND PERFORMANCE OF THE SYSTEM. ANY EQUIPMENT THAT MEETS OR EXCEEDS THE PERFORMANCE SHALL BE CONSIDERED AND APPROVED AT THE DISCRETION OF THE ENGINEER AND/OR OWNER.
- THE ELECTRICAL SERVICE ENTRANCE WORK SHALL BE INSTALLED IN ACCORDANCE WITH THE ELECTRICAL UTILITY COMPANY'S RULES AND REGULATIONS FOR ELECTRIC SERVICE HANDBOOK, LATEST EDITION.
- ALL 15A/1P CIRCUITS SHALL CONTAIN 2#12 & 1#12 GND IN 1/2" C, UNLESS NOTED OTHERWISE.
- ALL 20A/1P OR 20A/2P CIRCUITS SHALL CONTAIN 2#12 & 1#12 GND IN 1/2" C, UNLESS NOTED OTHERWISE.
- PANELBOARDS SHALL BE SIZED AS INDICATED ON THE SCHEDULES AND MANUFACTURED BY GE, SQUARE D, CUTLER-HAMMER OR EQUAL. REFER TO SHEETS E3.1 AND E3.2 FOR PANEL SCHEDULES.
- ALL ELECTRICAL EQUIPMENT DESIGNED TO BE INSTALLED OUTSIDE SHALL BE PROVIDED WITH NEMA 3R WEATHERPROOF ENCLOSURE.
- ALL EQUIPMENT SHALL BE GROUNDED IN ACCORDANCE WITH NEC ARTICLE 250.
- ELECTRICAL CONTRACTOR TO PROVIDE TO BUILDING OWNER AN OPERATING AND MAINTENANCE MANUAL FOR ELECTRICAL EQUIPMENT INSTALLED. THE MANUAL SHALL INCLUDE, AT A MINIMUM, THE FOLLOWING:
 - SUBMITTAL DATA STATING EQUIPMENT RATING AND SELECTED OPTIONS FOR EACH PIECE OF EQUIPMENT REQUIRING MAINTENANCE.
 - OPERATION AND MAINTENANCE MANUALS FOR EACH PIECE OF EQUIPMENT REQUIRING MAINTENANCE. REQUIRED ROUTINE MAINTENANCE ACTIONS SHALL BE CLEARLY IDENTIFIED.
 - NAMES AND ADDRESSES OF AT LEAST ONE QUALIFIED SERVICE AGENCY.

KEYED NOTES

- ALL COMMUNICATION CABLES SHALL BE PLENUM RATED.
- #6 BARE COPPER GROUND CONDUCTOR TO ELECTRICAL GROUNDING SYSTEM.
- PAINT PLYWOOD BACKBOARD WITH GRAY FLAME RETARDANT PAINT ON ALL SIDES.
- MAIN SERVICE DISCONNECT. 200A, FUSED DISCONNECT SWITCH, 208/120V, 3Ø, 4-WIRE NEMA-3R ENCLOSURE.

FEEDER SCHEDULE

| FEEDER NUMBER | QUANTITY OF PARALLEL RUNS | CONDUIT | PHASE | | NEUTRAL | SERVICE / EQUIPMENT GROUND |
|---------------|---------------------------|---------|----------|------|---------|----------------------------|
| | | | QUANTITY | SIZE | | |
| (1) | 1 | 2" | 3 | #3/0 | #3/0 | #4 |



COMMUNICATIONS RISER DIAGRAM
SCALE: NONE

PANELBOARD: L3A FULLY RATED AIC: 10,000 SYSTEM VOLTS: 208 Y/120 V, 3 PH, 4W
 LOCATION: PREP 104 MAX VOLTAGE: 208 MAIN CIRCUIT BREAKER: 200 AMP
 MOUNTING: SURFACE ENCL: NEMA 1 BUS SIZE: 225 AMP

| CIRCUIT | NO | AMP | P | LTS. | RECEP. | OTHER | DESCRIPTION | VOLT AMP | | | DESCRIPTION | LTS. | RECEP. | OTHER | P | AMP | CIRCUIT | NO | |
|------------------|----|-----|---|-------|--------|-------|-----------------------------|------------|--------|--------------|-------------|------|--------|-------|---|-----|---------|----|--|
| | | | | | | | | PH. A | PH. B | PH. C | | | | | | | | | |
| | 1 | 20 | 1 | 690 | | | LTC - RM 100, 101 | 2,130 | | | | | | | | | | | |
| | 3 | 20 | 1 | 506 | | 50 | LTC - RM 102, 103, 104 | 1,996 | | | | | | | | | | | |
| | 5 | 20 | 1 | 1,260 | | | REC - RM 100 | | | 2,292 | | | | | | | | | |
| | 7 | 20 | 1 | 1,660 | | | REC - RM 100, 102, 103, 104 | 2,080 | 1,540 | | | | | | | | | | |
| | 9 | 20 | 1 | 940 | | | REC - RM 101 COUNTR | | | | | | | | | | | | |
| | 11 | 20 | 1 | 900 | | | REC - RM 104 | | | 2,435 | | | | | | | | | |
| | 13 | 20 | 1 | | | | SPARE | 1,656 | | | | | | | | | | | |
| | 15 | 20 | 1 | | | | SPARE | | 1,176 | | | | | | | | | | |
| | 17 | 20 | 1 | | | | SPARE | | | 0 | | | | | | | | | |
| | 19 | 20 | 1 | | | | SPARE | 0 | | | | | | | | | | | |
| | 21 | 20 | 1 | | | | SPARE | | | 0 | | | | | | | | | |
| | 23 | 20 | 1 | | | | SPARE | | | | | | | | | | | | |
| | 25 | 100 | 3 | | | | 10,824 ROOF TOP UNIT, RTU-1 | 10,824 | | | | | | | | | | | |
| | 27 | | | | | | 10,824 | | | 13,824 | | | | | | | | | |
| | 29 | | | | | | 10,824 | | | 13,824 | | | | | | | | | |
| CONNECTED LOADS: | | | | | | | | LTS: 1,196 | | RECEP: 3,780 | | | | | | | | | |
| | | | | | | | | 16,690 | 18,536 | 18,051 | | | | | | | | | |
| | | | | | | | | -7% | 3% | 3% | | | | | | | | | |
| | | | | | | | | 53,777 | | | | | | | | | | | |
| | | | | | | | | 17,926 | | | | | | | | | | | |
| | | | | | | | | 149 | | | | | | | | | | | |
| | | | | | | | | 149 | | | | | | | | | | | |

Scopo design group, LLC
 Architecture Planning Interiors
 1930 San Marco Blvd., Suite 203
 Jacksonville, Florida 32207
 T 904 253 3902 F 904 253 3906
 www.scopodesigngroup.com
 A.26001292

PROJECT ENGINEER
 MARK A. MORLEY, PE
 FLORIDA LICENSE NO. 59813

THE OHMEGA GROUP
 CONSULTING ENGINEERS
 1655 SAN MARCO BLVD.
 JACKSONVILLE, FLORIDA 32207
 T: (904) 807-6513 F: (904) 807-6550
 WWW.OHMEGAGROUP.COM
 FLORIDA CEA NO. 25911

PROJECT TEAM

OWNER
 COMMUNITY REHABILITATION CENTER
 904-358-1211

LANDLORD
 PEARL PLAZA PARTNERS, LLC
 904-537-6186

ARCHITECT
 SCOPO DESIGN GROUP, LLC
 904-253-3902

M/E/P ENGINEER
 THE OHMEGA GROUP, LLC
 904-807-6512

| DATE | ISSUE |
|-------------|--------|
| 08 JUL 2008 | PERMIT |

EXISTING CONDITIONS
CRC SANDWICH SHOP
 PEARL PLAZA SHOPPING CENTER
 5323 SPRINGFIELD AVENUE
 JACKSONVILLE, FLORIDA 32208

ELECTRICAL RISER DIAGRAM
 AND DETAILS

PROJECT NO: 00158-0708
 DRAWN BY: MAM
 CHECKED BY: MAM
 SHEET NO:
E2.3
 SHEET

Scopo Design Group, LLC. hereby expressly reserves the rights to this drawing and it is not to be reproduced or copied in any format or manner whatsoever without first obtaining permission and consent.