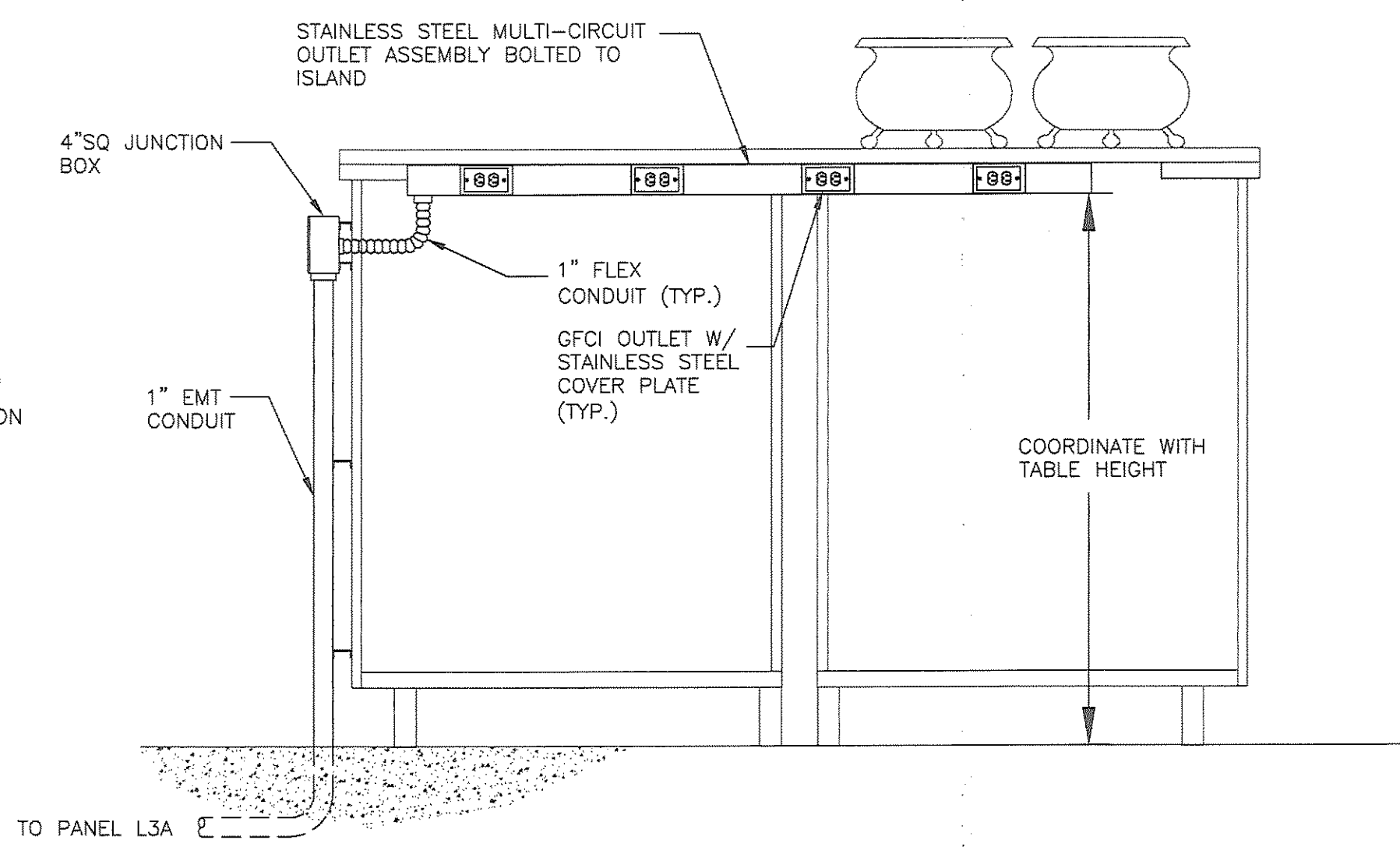


**SURFACE RACEWAY DETAIL -
COUNTER**

SCALE: NONE



**SURFACE RACEWAY DETAIL -
ISLAND**

SCALE: NONE

GENERAL NOTES

1. ALL ELECTRICAL WORK SHALL COMPLY WITH THE LATEST EDITIONS OF THE NATIONAL ELECTRICAL CODE, FIRE SAFETY CODES, ENERGY CODES, THE AMERICANS WITH DISABILITIES ACT, AND LOCAL BUILDING CODES.
2. THE CONTRACTOR SHALL THOROUGHLY REVIEW THE PROJECT SITE TO ENSURE THAT ALL WORK WILL MEET OR EXCEED THE ABOVE REQUIREMENTS. ANY ALLEGED DISCREPANCIES SHALL BE BROUGHT TO THE A/E'S ATTENTION.
3. THE CONTRACTOR SHALL VISIT THE SITE TO DETERMINE EXISTING CONDITIONS PRIOR TO SUBMITTING BID.

SCOPO
design group, LLC
Architecture Planning Interiors
1930 San Marco Blvd., Suite 203
Jacksonville, Florida 32207
T 904 253 3902 F 904 253 3906
www.scopodesigngroup.com
AA26001292

PROJECT ENGINEER
MARK A. MORLEY, PE
FLORIDA LICENSE NO. 59813

THE OHMEGA GROUP
CONSULTING ENGINEERS
1805 SAN MARCO BLVD
JACKSONVILLE, FLORIDA 32207
T: (904) 807-6512 F: (904) 807-6550
WWW.OHMEGAGROUP.COM
FLORIDA OCEA NO. 25911
ELECTRICAL ENGINEER
MARK A. MORLEY, PE
FLORIDA PE NO. 59813
MECHANICAL ENGINEER
EMERY A. ORTAK, PE
FLORIDA PE NO. 65272

PROJECT TEAM

OWNER
COMMUNITY REHABILITATION
CENTER
904-358-1211

LANDLORD
PEARL PLAZA PARTNERS, LLC
904-537-6186

ARCHITECT
SCOPO DESIGN GROUP, LLC
904-253-3902

M/E/P ENGINEER
THE OHMEGA GROUP, LLC
904-807-6512

DATE	ISSUE
08 JUL 2008	PERMIT

EXISTING CONDITIONS
CRC SANDWICH SHOP
PEARL PLAZA SHOPPING CENTER
3323 SPRINGFIELD AVENUE
JACKSONVILLE, FLORIDA 32208
ELECTRICAL DETAILS

PROJECT NO: 00158-0708
DRAWN BY: MAM
CHECKED BY: MAM
SHEET NO:
E2.2
SHEET

Scopo Design Group, LLC. hereby expressly reserves the rights to this drawing and it is not to be reproduced or copied in any format or manner whatsoever without first obtaining permission and consent.