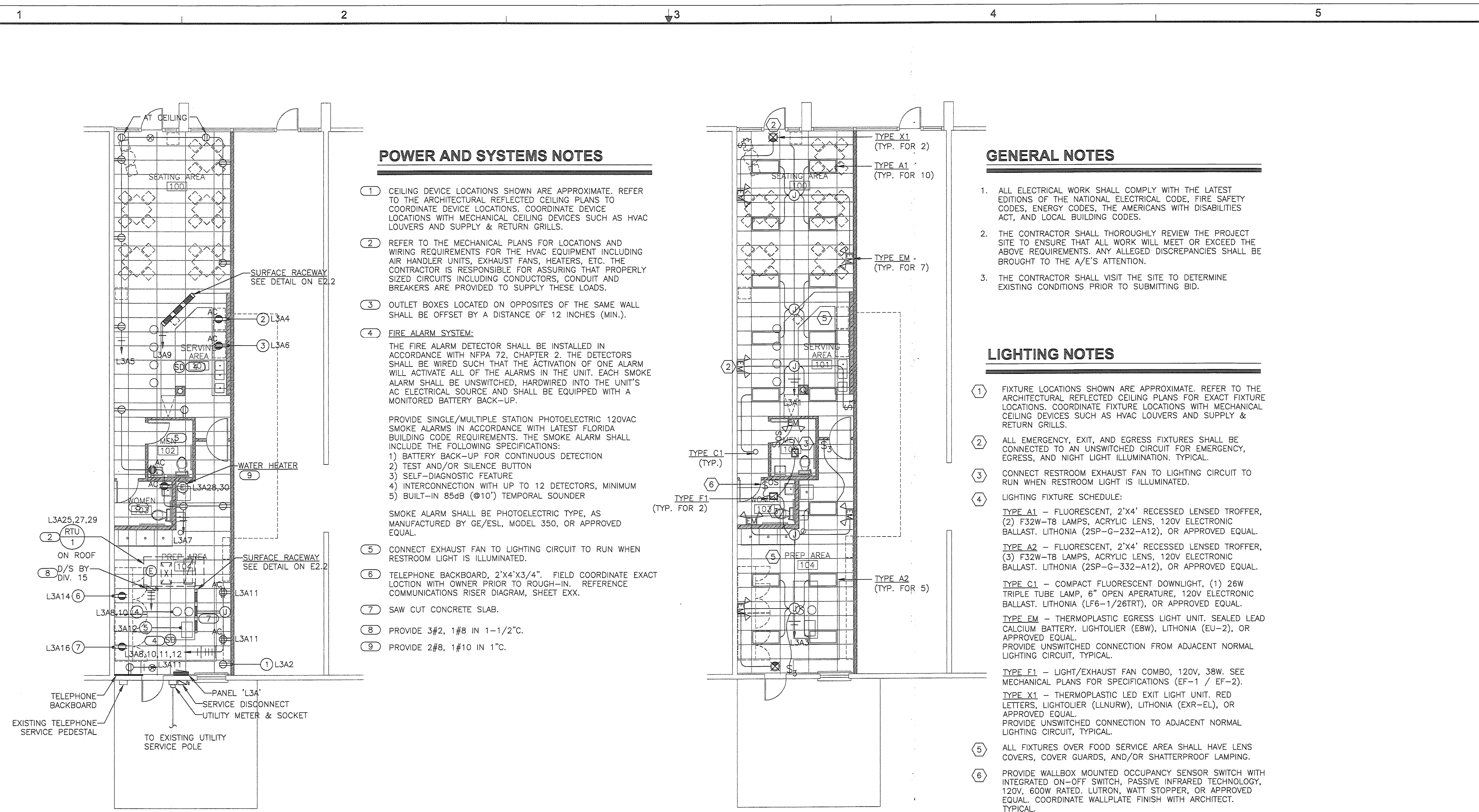


DATE	ISSUE
08 JUL 2008	PERMIT



**POWER AND SYSTEMS NOTES**

- CEILING DEVICE LOCATIONS SHOWN ARE APPROXIMATE. REFER TO THE ARCHITECTURAL REFLECTED CEILING PLANS TO COORDINATE DEVICE LOCATIONS. COORDINATE DEVICE LOCATIONS WITH MECHANICAL CEILING DEVICES SUCH AS HVAC LOUVERS AND SUPPLY & RETURN GRILLS.
- REFER TO THE MECHANICAL PLANS FOR LOCATIONS AND WIRING REQUIREMENTS FOR THE HVAC EQUIPMENT INCLUDING AIR HANDLER UNITS, EXHAUST FANS, HEATERS, ETC. THE CONTRACTOR IS RESPONSIBLE FOR ASSURING THAT PROPERLY SIZED CIRCUITS INCLUDING CONDUCTORS, CONDUIT AND BREAKERS ARE PROVIDED TO SUPPLY THESE LOADS.
- OUTLET BOXES LOCATED ON OPPOSITES OF THE SAME WALL SHALL BE OFFSET BY A DISTANCE OF 12 INCHES (MIN.).
- FIRE ALARM SYSTEM:**  
THE FIRE ALARM DETECTOR SHALL BE INSTALLED IN ACCORDANCE WITH NFPA 72, CHAPTER 2. THE DETECTORS SHALL BE WIRED SUCH THAT THE ACTIVATION OF ONE ALARM WILL ACTIVATE ALL OF THE ALARMS IN THE UNIT. EACH SMOKE ALARM SHALL BE UNSWITCHED, HARDWIRED INTO THE UNIT'S AC ELECTRICAL SOURCE AND SHALL BE EQUIPPED WITH A MONITORED BATTERY BACK-UP.  
  
PROVIDE SINGLE/MULTIPLE STATION PHOTOELECTRIC 120VAC SMOKE ALARMS IN ACCORDANCE WITH LATEST FLORIDA BUILDING CODE REQUIREMENTS. THE SMOKE ALARM SHALL INCLUDE THE FOLLOWING SPECIFICATIONS:  
1) BATTERY BACK-UP FOR CONTINUOUS DETECTION  
2) TEST AND/OR SILENCE BUTTON  
3) SELF-DIAGNOSTIC FEATURE  
4) INTERCONNECTION WITH UP TO 12 DETECTORS, MINIMUM  
5) BUILT-IN 85dB (⑩10') TEMPORAL SOUNDER  
  
SMOKE ALARM SHALL BE PHOTOELECTRIC TYPE, AS MANUFACTURED BY GE/ESL, MODEL 350, OR APPROVED EQUAL.
- CONNECT EXHAUST FAN TO LIGHTING CIRCUIT TO RUN WHEN RESTROOM LIGHT IS ILLUMINATED.
- TELEPHONE BACKBOARD, 2'X4'X3/4". FIELD COORDINATE EXACT LOCATION WITH OWNER PRIOR TO ROUGH-IN. REFERENCE COMMUNICATIONS RISER DIAGRAM, SHEET EXX.
- SAW CUT CONCRETE SLAB.
- PROVIDE 3#2, 1#8 IN 1'-1/2".
- PROVIDE 2#8, 1#10 IN 1'.

**GENERAL NOTES**

- ALL ELECTRICAL WORK SHALL COMPLY WITH THE LATEST EDITIONS OF THE NATIONAL ELECTRICAL CODE, FIRE SAFETY CODES, ENERGY CODES, THE AMERICANS WITH DISABILITIES ACT, AND LOCAL BUILDING CODES.
- THE CONTRACTOR SHALL THOROUGHLY REVIEW THE PROJECT SITE TO ENSURE THAT ALL WORK WILL MEET OR EXCEED THE ABOVE REQUIREMENTS. ANY ALLEGED DISCREPANCIES SHALL BE BROUGHT TO THE A/E'S ATTENTION.
- THE CONTRACTOR SHALL VISIT THE SITE TO DETERMINE EXISTING CONDITIONS PRIOR TO SUBMITTING BID.

**LIGHTING NOTES**

- FIXTURE LOCATIONS SHOWN ARE APPROXIMATE. REFER TO THE ARCHITECTURAL REFLECTED CEILING PLANS FOR EXACT FIXTURE LOCATIONS. COORDINATE FIXTURE LOCATIONS WITH MECHANICAL CEILING DEVICES SUCH AS HVAC LOUVERS AND SUPPLY & RETURN GRILLS.
- ALL EMERGENCY, EXIT, AND EGRESS FIXTURES SHALL BE CONNECTED TO AN UNSWITCHED CIRCUIT FOR EMERGENCY, EGRESS, AND NIGHT LIGHT ILLUMINATION. TYPICAL.
- CONNECT RESTROOM EXHAUST FAN TO LIGHTING CIRCUIT TO RUN WHEN RESTROOM LIGHT IS ILLUMINATED.
- LIGHTING FIXTURE SCHEDULE:  
TYPE A1 - FLUORESCENT, 2'X4' RECESSED LENSED TROFFER, (2) F32W-T8 LAMPS, ACRYLIC LENS, 120V ELECTRONIC BALLAST. LITHONIA (2SP-G-232-A12), OR APPROVED EQUAL.  
TYPE A2 - FLUORESCENT, 2'X4' RECESSED LENSED TROFFER, (3) F32W-T8 LAMPS, ACRYLIC LENS, 120V ELECTRONIC BALLAST. LITHONIA (2SP-G-332-A12), OR APPROVED EQUAL.  
TYPE C1 - COMPACT FLUORESCENT DOWNLIGHT, (1) 26W TRIPLE TUBE LAMP, 6" OPEN APERTURE, 120V ELECTRONIC BALLAST. LITHONIA (LF6-1/26TRT), OR APPROVED EQUAL.  
TYPE EM - THERMOPLASTIC EGRESS LIGHT UNIT. SEALED LEAD CALCIUM BATTERY. LIGHTOLIER (E8W), LITHONIA (EU-2), OR APPROVED EQUAL.  
PROVIDE UNSWITCHED CONNECTION FROM ADJACENT NORMAL LIGHTING CIRCUIT, TYPICAL.  
TYPE E1 - LIGHT/EXHAUST FAN COMBO, 120V, 39W. SEE MECHANICAL PLANS FOR SPECIFICATIONS (EF-1 / EF-2).  
TYPE X1 - THERMOPLASTIC LED EXIT LIGHT UNIT. RED LETTERS, LIGHTOLIER (LLNURW), LITHONIA (EXR-EL), OR APPROVED EQUAL.  
PROVIDE UNSWITCHED CONNECTION TO ADJACENT NORMAL LIGHTING CIRCUIT, TYPICAL.
- ALL FIXTURES OVER FOOD SERVICE AREA SHALL HAVE LENS COVERS, COVER GUARDS, AND/OR SHATTERPROOF LAMPING.
- PROVIDE WALLBOX MOUNTED OCCUPANCY SENSOR SWITCH WITH INTEGRATED ON-OFF SWITCH, PASSIVE INFRARED TECHNOLOGY, 120V, 600W RATED. LUTRON, WATT STOPPER, OR APPROVED EQUAL. COORDINATE WALLPLATE FINISH WITH ARCHITECT. TYPICAL.

**ELECTRICAL POWER PLAN** ① ②  
SCALE: 1/8" = 1'-0"  
NORTH

**ELECTRICAL LIGHTING PLAN** ①  
SCALE: 1/8" = 1'-0"  
NORTH

**KITCHEN ELECTRICAL EQUIPMENT SCHEDULE**

EQUIPMENT NUMBER	QUANTITY	DESCRIPTION	VOLTAGE	PHASE	WATTS	AMPS	HP	CONNECTION R - RECEP. J - J-BOX	MOUNTING HEIGHT	REMARKS
①	1	ICE MAKER AND STORAGE BIN	115V/60HZ	1	15			R - 5-15R	1'-6"	EQUIPMENT BY OWNER
②	1	SODA DISPENSER	115V/60HZ	1	15			R - 5-15R	3'-6"	EQUIPMENT BY OWNER
③	1	SANDWICH TABLE	115V/60HZ	1	8.6	1/3		R - 5-15R	1'-6"	EQUIPMENT BY OWNER
④	2	SOUP KETTLE	115V/60HZ	1	1,000	13		R - 5-15R	VERIFY	EQUIPMENT BY OWNER
⑤	1	HOT DOG GRILL	115V/60HZ	1	1,535	13		R - 5-15R	VERIFY	EQUIPMENT BY OWNER
⑥	1	COMMERCIAL FREEZER	115V/60HZ	1	13.8	3/4		R - 5-15R	1'-6"	EQUIPMENT BY OWNER
⑦	1	COMMERCIAL REFRIGERATOR	115V/60HZ	1	9.8	1/2		R - 5-15R	1'-6"	EQUIPMENT BY OWNER