

J:\23081.00 - ST. AUGUSTINE\23081.13 - Airport Restaurant Modifications\Drawings\STAIR Cover Sheet.dwg, 8/22/2006 1:41:53 PM, mmejbovsky

CONSTRUCTION DRAWINGS  
FOR

# AIRPORT RESTAURANT MODIFICATIONS

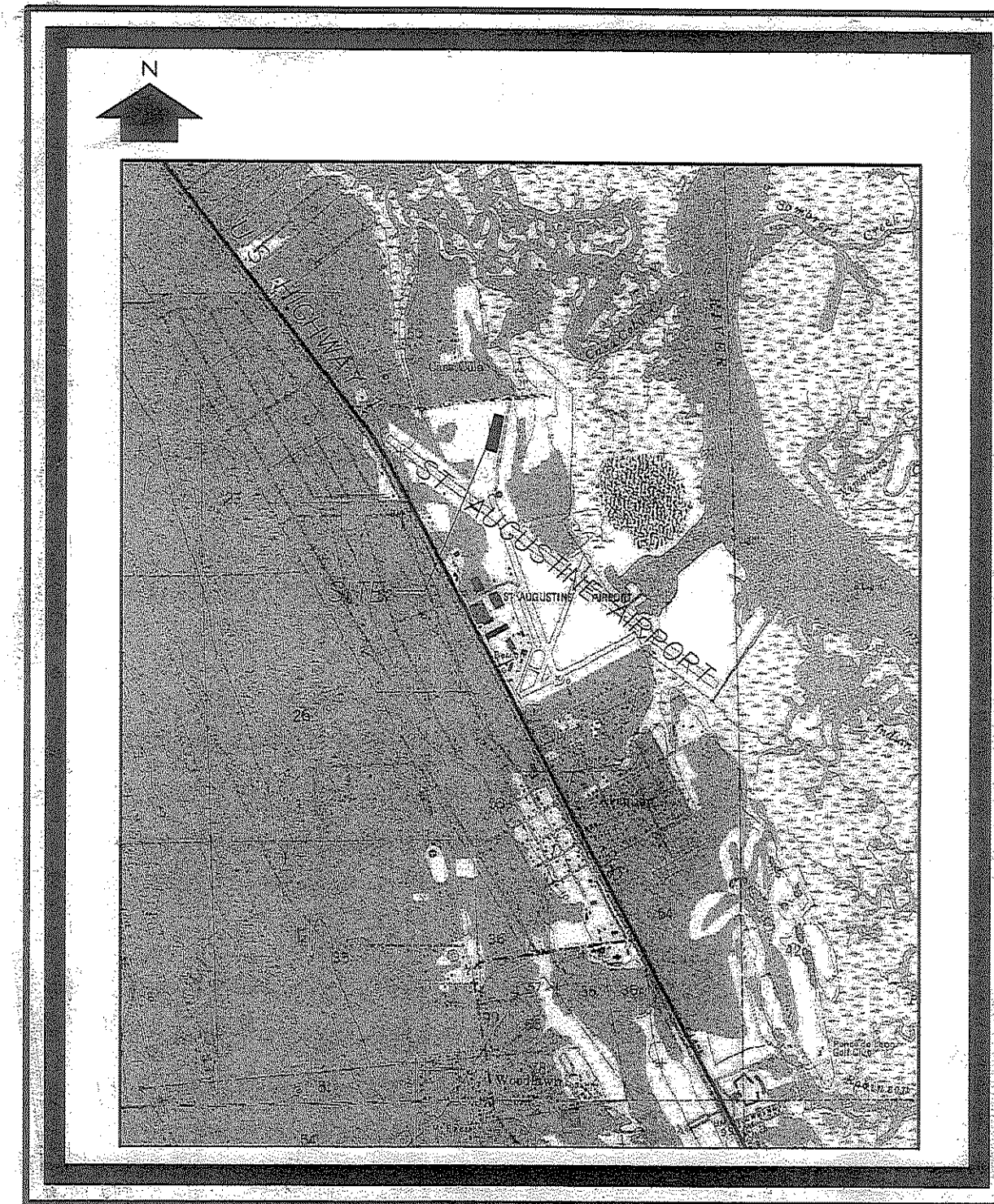
PA PROJECT NO. 23081.09  
AUGUST, 2006

PREPARED FOR:

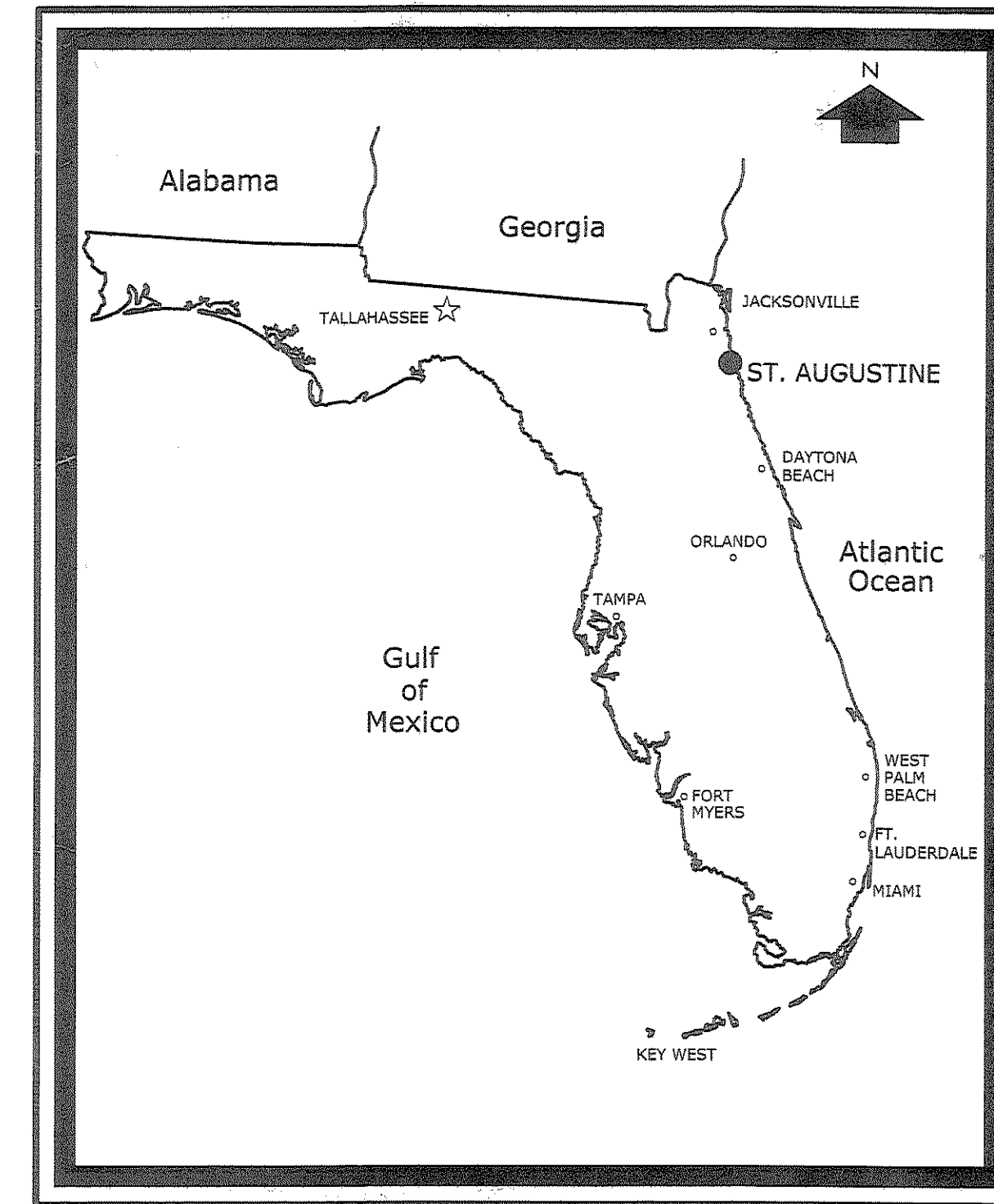
ST. AUGUSTINE-ST. JOHNS COUNTY  
AIRPORT AUTHORITY

St. Augustine, Florida 32095

4796 U.S. 1 NORTH



LOCATION MAP  
(N.T.S.)



VICINITY MAP  
(N.T.S.)

St. Augustine-St. Johns County Airport Authority

CHAIR  
SECRETARY/TREASURER  
MEMBER  
MEMBER  
MEMBER  
EXECUTIVE DIRECTOR

WAYNE GEORGE  
ROBERT "BOB" COX  
JOHN "JACK" GORMAN  
RANDY BRUNSON  
SUZANNE GREEN  
EDWARD WUELLNER

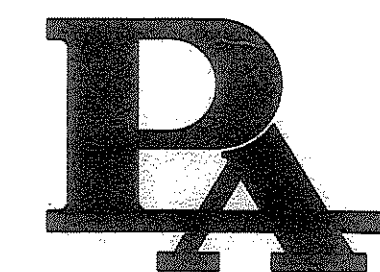
INDEX OF DRAWINGS

SHEET NO.	DESCRIPTION
Cover Sheet	
A-1	PLANS AND NOTES
A-2	SECTIONS AND DETAILS

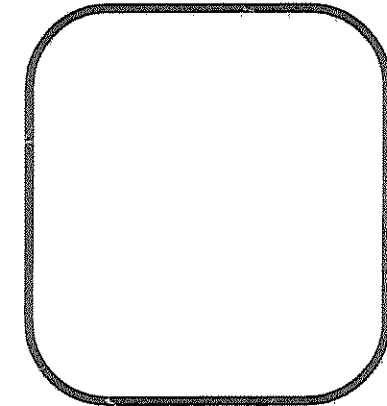
## Passero Associates

1405 Park Avenue, Suite 201  
Fernandina Beach, FL 32034  
904-491-3804 Fax 904-491-3840

Engineering  
Architecture  
Surveying  
Planning



No.	DATE	BY	REVISION



**PA** PASSERO ASSOCIATES  
ARCHITECTS-ENGINEERS-SURVEYORS  
199 LIBERTY POLE WAY ROCKEBERRY  
FL 395-325-1000 1404  
FAC 904-325-1551

PROJECT	Restaurant Stair Replacement	PIC.	AH
DRAWING	Cover Page	PLT	PHI
CLIENT	St. Augustine - St. Johns County Airport Authority	DATE	08/22/06

PROJECT NO.	23081.09
DATE	AUG. 2006
SHEET NO.	Cover