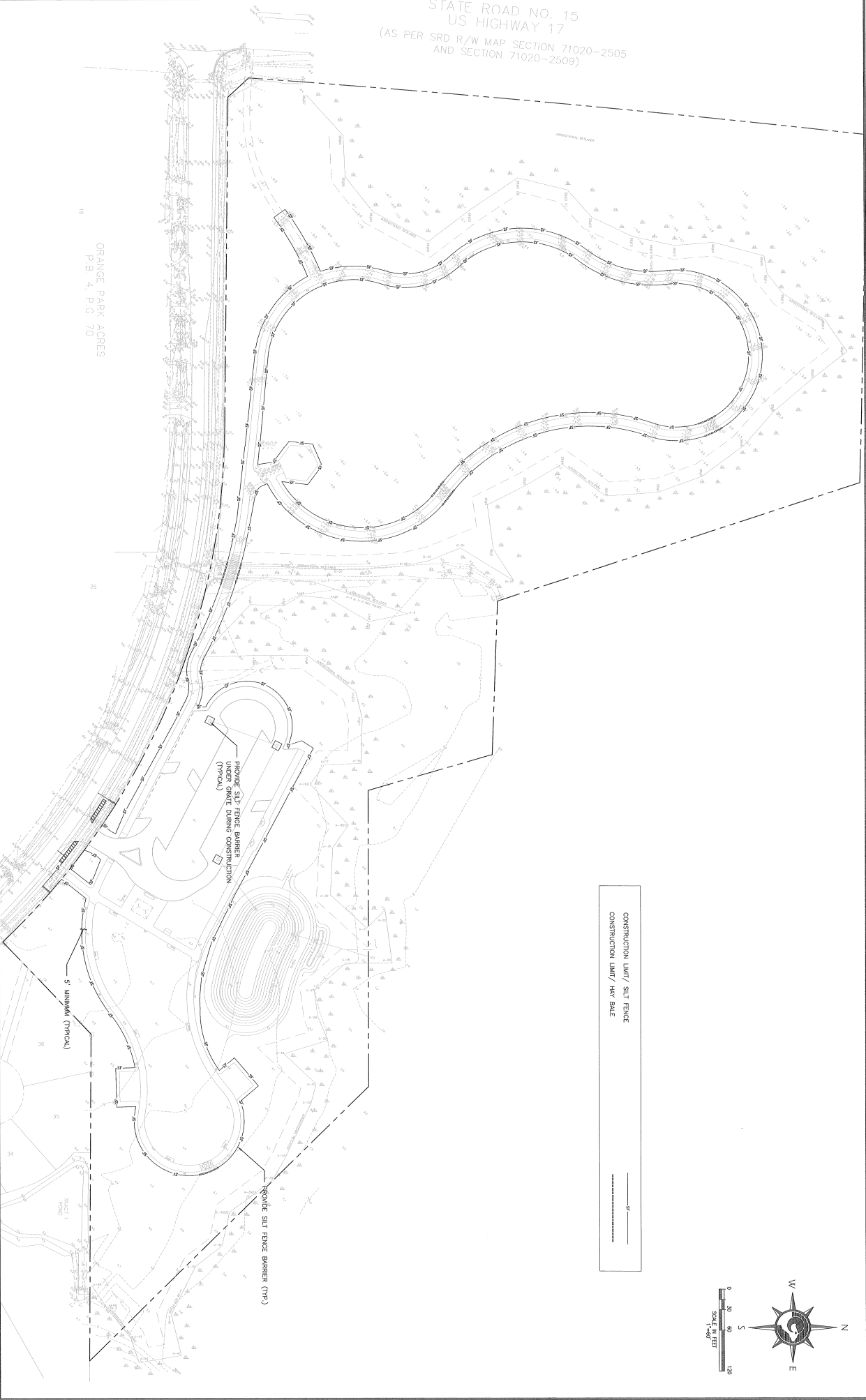
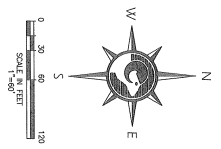


STATE ROAD NO. 15  
 US HIGHWAY 17  
 (AS PER SRD R/W MAP SECTION 71020-2505  
 AND SECTION 71020-2509)

ORANGE PARK ACRES  
 P.B. 4, P.G. 70



CONSTRUCTION LIMIT/ SILT FENCE  
 CONSTRUCTION LIMIT/ HWY BALE



REVISIONS		REVISIONS					
NO.	BY	DATE	DESCRIPTION	NO.	BY	DATE	DESCRIPTION
1				1			
2				2			
3				3			
4				4			
5				5			

DESIGNER	H.S.K.	DATE	JAN. 2009
DRAWN BY	J.M.S.	CHECKED BY	F.E.G.
PROJECT NO.	208-005-04	DATE	JAN. 2009

<p><b>THE PALM PROFESSIONAL GROUP, INC.</b>          3000 STATE ROAD 15, SUITE 200          WEST PALM BEACH, FL 33411          FRANK E. GRAY, P.E., F.L.A. REG. NO. 43053</p>	<p><b>CLAY COUNTY</b>  <b>PARKS AND RECREATION</b>  <b>DEPARTMENT</b></p>	<p>PROJECT NO: 208-005-04          DATE: JANUARY 2009          SCALE: 1" = 60'</p>	<p>EROSION CONTROL PLAN          MOCCASIN SLOUGH PARK</p>	<p>TOTAL NO. SHEETS          DRAWING NO.  <b>C-9</b></p>
---	---	--	---	--