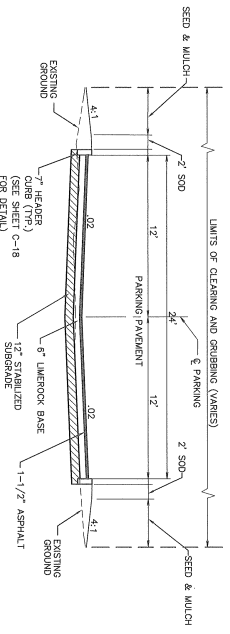
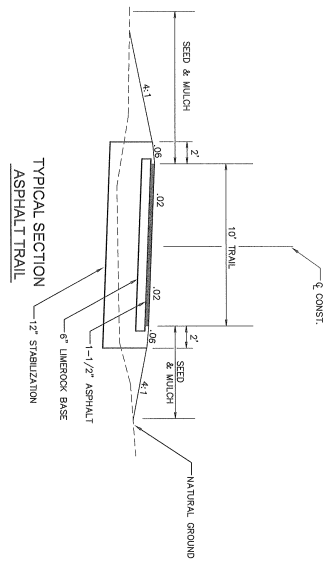


ROADWAY SECTION @ ENTRANCE



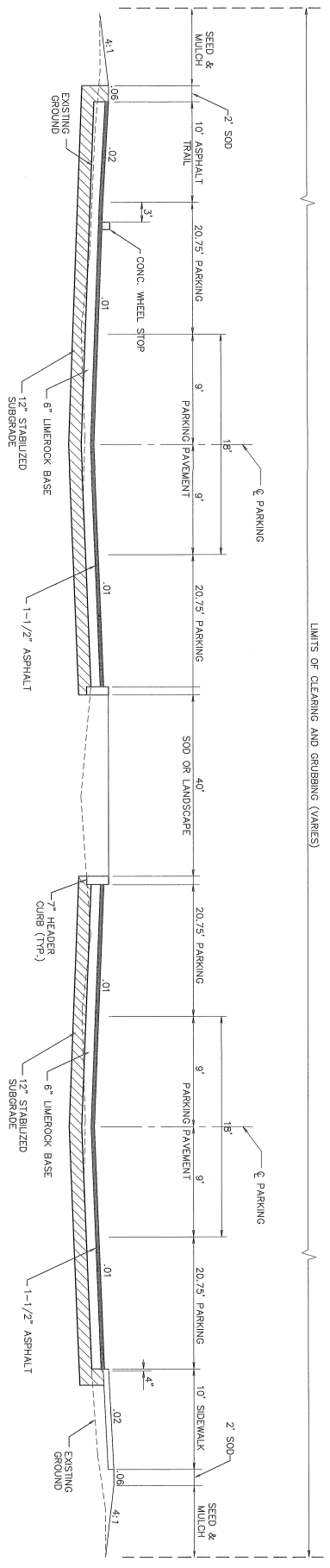
ROADWAY SECTION @ STA. 11+00



TYPICAL SECTION ASPHALT TRAIL

TYPE S-1 STRUCTURAL COURSE (1-1/2")
 LIEROCK BASE COURSE (1-1/2")
 LIEROCK BASE COURSE (1-1/2")
 AT 88% MOISTURE PROCTOR

PAVEMENT DESIGN



TYPICAL SECTION THROUGH PARKING LOT FACING WEST

NO.	BY	DATE	REVISIONS	NO.	BY	DATE	REVISIONS
1				1			
2				2			
3				3			
4				4			
5				5			

DESIGNER	H.S.K.	CHECKED BY	F.C.G.
DRAWN BY	J.M.T.	DATE	JAN. 2008
PROJECT NO.	208-005-04	DATE	JANUARY, 2008
SCALE	NONE	PROJECT NO.	208-005-04
		DATE	JANUARY, 2008
		SCALE	NONE

THE PAAL PROFESSIONAL GROUP, INC.	CLAY COUNTY PARKS AND RECREATION DEPARTMENT
2800 S.W. 10TH AVENUE, SUITE 200, MIAMI, FL 33135	MOCCASIN SLOUGH PARK
FRANK E. GRAY, P.E., P.L.A. REG. NO. 43053	

TOTAL NO. SHEETS	5
CURRENT SHEET NO.	C-5