

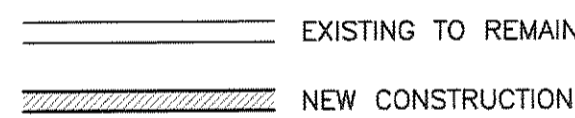
CONSTRUCTION NOTES

- A. DIMENSIONS ARE TO FACE OF STUD, UNLESS OTHERWISE NOTED.
- B. DO NOT SCALE DRAWINGS. WHERE NO DIMENSIONS, OR DISCREPANCIES OCCUR, VERIFY CORRECT LOCATION WITH ARCHITECT PRIOR TO ERECTION, FABRICATION OR INSTALLATION.
- C. PROVIDE PROPER SEPARATION BETWEEN ALL DISSIMILAR MATERIALS.
- D. G.C. TO PROVIDE FIRE EXTINGUISHERS AS REQUIRED PER APPLICABLE CODES AND SHALL COORDINATE EXACT LOCATIONS WITH FIRE MARSHAL.
- E. THERE SHALL BE NO DEVIATIONS FROM ARCHITECTURAL DRAWINGS WITHOUT WRITTEN APPROVAL OF THE ARCHITECT. APPROVAL BY CITY INSPECTOR DOES NOT CONSTITUTE AUTONOMY TO DEVIATE FROM PLANS.
- F. ALL EXIT DOORS SHALL BE ABLE TO BE OPENED FROM INSIDE THE BUILDING WITHOUT THE USE OF A KEY OR ANY SPECIAL KNOWLEDGE OR EFFORT.
- G. BLOCKING IN PARTITIONS SHALL BE PROVIDED IN ALL AREAS WHERE REQUIRED, WHICH WILL INCLUDE, BUT IS NOT LIMITED TO, OPEN AND CLOSED SHELVING, COAT POLES AND SHELVES, CABINETRY, TENANT SUPPLIED WALL MOUNTED FURNITURE SYSTEMS, COUNTERS, GRAB BARS, FIXTURES OF ANY KIND, AND MOLDINGS/TRIM.
- H. G.C. SHALL PROVIDE AND INSTALL ALL PARTITIONS TO MEET APPLICABLE BUILDING CODE REGULATIONS AND AS DESIGNATED ON DRAWINGS BY THE ARCHITECT.
- J. G.C. TO VERIFY ALL DIMENSIONS IN THE FIELD.
- K. FINISHED DOOR OPENINGS IN ALL PARTITIONS SHALL BE SET 4" FROM ADJACENT PERPENDICULAR PARTITION UNLESS OTHERWISE NOTED.
- L. DIMENSIONS NOTED AS "CLEAR" SHALL BE FROM FINISHED FACE TO FINISHED FACE.
- M. CONTRACTOR SHALL BE RESPONSIBLE FOR PREPARATION OF EXISTING WALL SURFACES TO RECEIVE NEW FINISHES AS SCHEDULED.
- N. G.C. SHALL PROVIDE ALL LINE AND GRADE MARKINGS ON THE SLAB FOR ALL PARTITIONS FOR THE ARCHITECTS APPROVAL PRIOR TO CONSTRUCTION.
- P. ALL WALL CONSTRUCTION FACING IN REST ROOMS SHALL RECEIVE MRGB.
- Q. GC TO PREPARE EXISTING CONCRETE SLAB TO RECEIVE NEW FLOOR FINISHES AS REQUIRED.

CEILING PLAN GENERAL NOTES

- A. THE GENERAL AND ELECTRICAL CONTRACTORS SHALL CHECK ALL CEILING HEIGHTS AND CEILING PLENUM CONDITIONS FOR CLEARANCE OF DUCT WORK, LIGHTING, AND OTHER OBSTRUCTIONS TO INSURE THE FINISHED CEILING HEIGHT SHOWN ON ARCHITECTS DRAWINGS. ANY DISCREPANCY SHALL BE BROUGHT TO THE ARCHITECTS ATTENTION PRIOR TO COMMENCEMENT OF WORK.
- B. IF A DISCREPANCY OCCURS BETWEEN LIGHTING FIXTURES AND LOCATIONS ON ARCHITECTS DWGS, THE GC SHALL NOTIFY ARCHITECT FOR CLARIFICATION.
- C. ALL RECESSED LIGHTS TO BE LOCATED IN CENTER OF TILES.
- D. NEW ACT AND GRID TO BE 2'x4'

WALL LEGEND



1 CONSTRUCTION PLAN
1/8" = 1'-0"

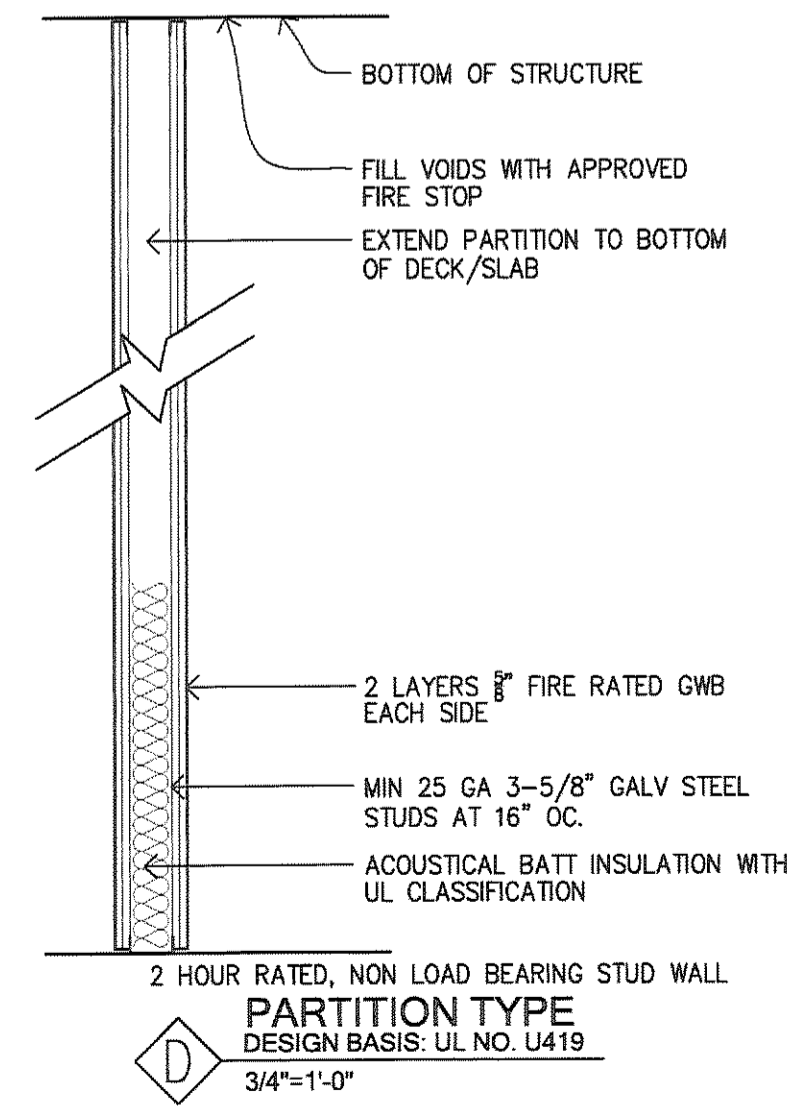
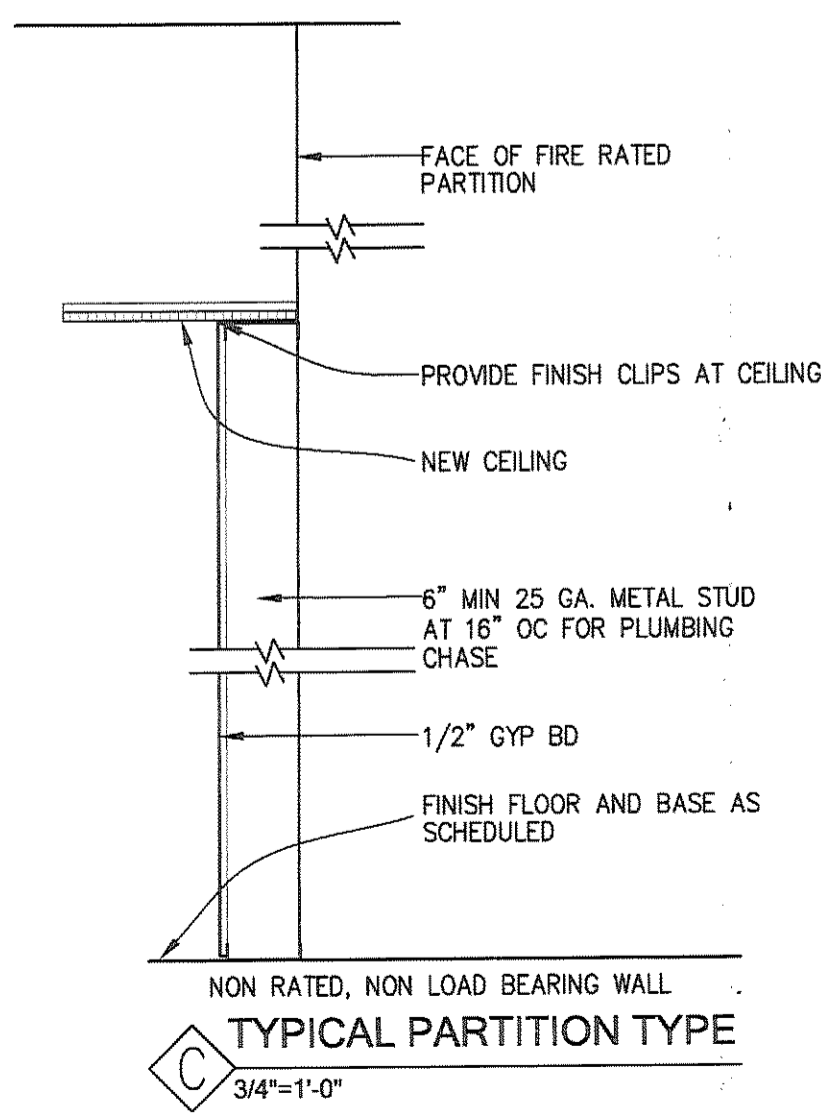
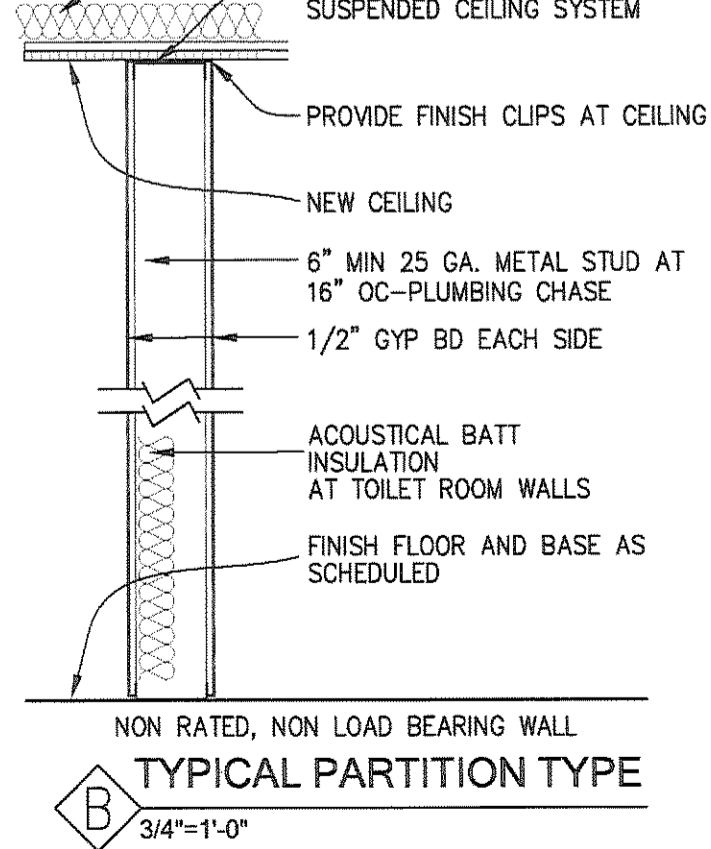
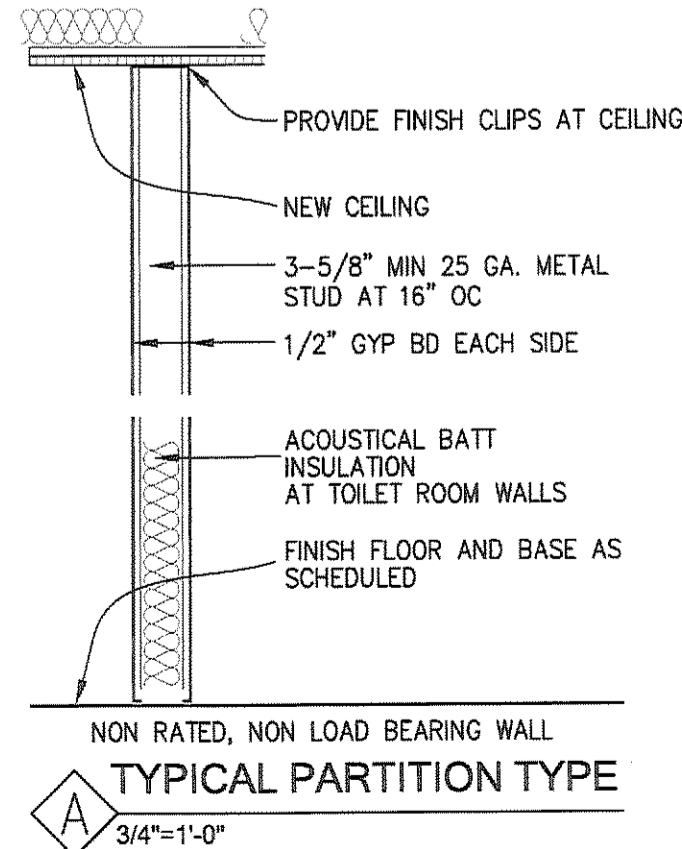
FIRE RATED PARTITION

FIRE RATED GYP BD TO BE CONTINUOUS AND BEHIND AND NOT INTERRUPTED BY NEW CONSTRUCTION. TAPE AND SEAL CORNER SEAM AS REQUIRED.

NON-RATED PARTITION, BRACE FROM ABOVE BACK TO EXISTING STRUCTURE AS REQUIRED. DO NOT PENETRATE EXISTING RATED WALL CONSTRUCTION.

NOTE: GC RESPONSIBLE FOR REPAIRING PATCHING ANY HOLES AND PENETRATIONS IN EXISTING FIRE RATED PARTITIONS WITH APPROVED UL RATED FIRE STOP MATERIAL.

3 TYPICAL WALL PLAN DETAIL
NON-RATED TO RATED WALL
1'-0"



FINISH SCHEDULE

ROOM NO	FLOOR	WALLS	CEILING
100	VCT	PAINTED	ACOUSTICAL CEILING TILE
101	VCT	FRP	VINYL FACED ACOUSTICAL CEILING TILE
102	VCT	PAINTED	ACOUSTICAL CEILING TILE
103	VCT	PAINTED	ACOUSTICAL CEILING TILE
104	VCT	FRP	VINYL FACED ACOUSTICAL CEILING TILE

NOTE: WALLS WITHIN 2 FEET OF URINALS AND WATER CLOSETS SHALL HAVE A SMOOTH HARD, NONABSORBENT SURFACE TO A HEIGHT OF 4 FEET ABOVE FLOOR, AND EXCEPT FOR STRUCTURAL ELEMENTS, THE MATERIALS USED IN SUCH WALLS SHALL BE OF A TYPE THAT IS NOT ADVERSELY AFFECTED BY MOISTURE. (FBC-B 1210.2)

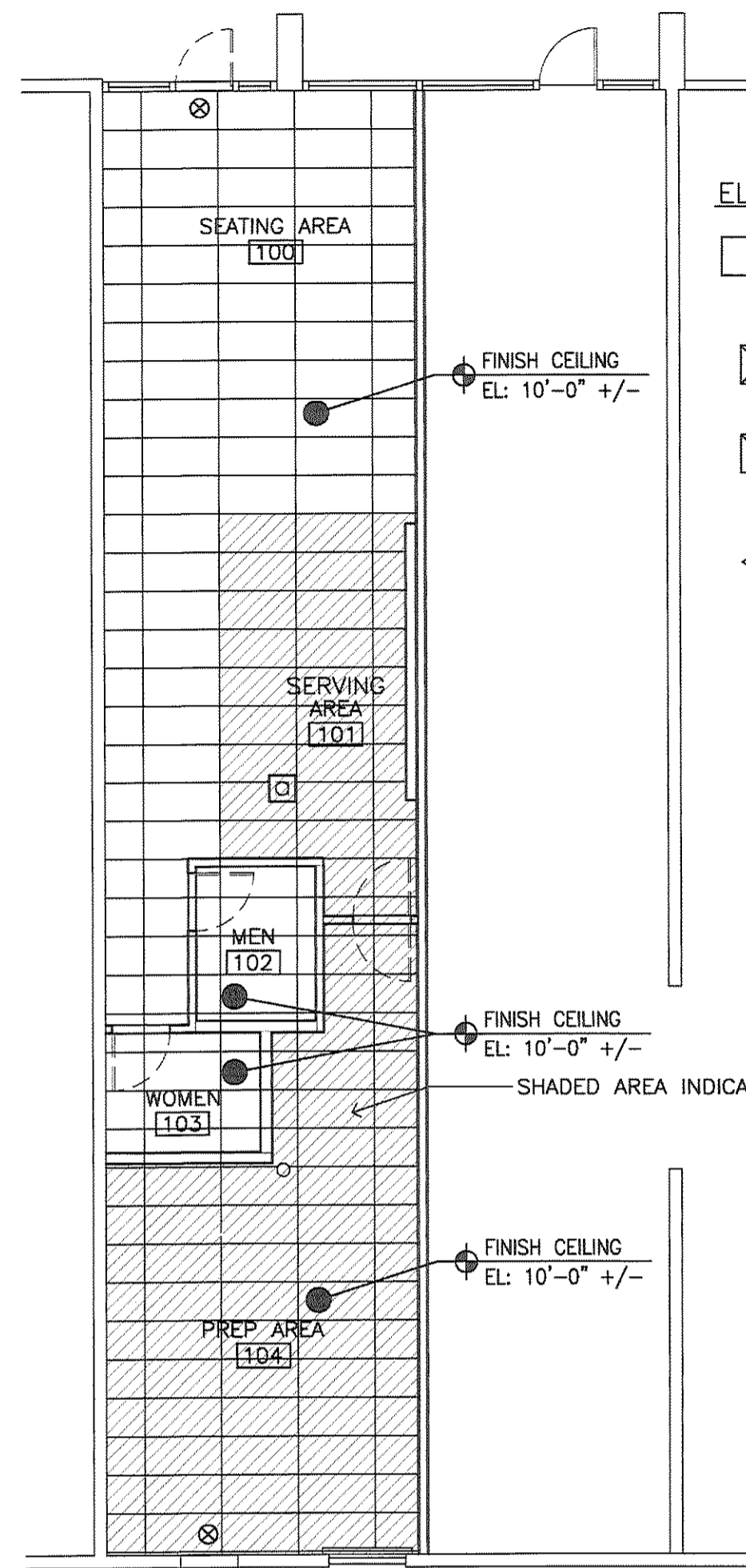
DOOR SCHEDULE

DOOR NO	SIZE	MATERIAL	REMARKS
100	-	-	-
101	- 30" x 80"	- ALUM (CLEAR)	-
102	- 30" x 80"	- ALUM (W/D)	-
103	- 30" x 80"	- ALUM (W/D)	-
104	- 30" x 80"	- ALUM (W/D)	-

TOILET ACCESSORY SCHEDULE

NO.	ITEM	MOUNTING	BRADLEY NO.
①	SOAP DISPENSER - LIQUID		
②	PAPER TOWEL DISPENSER	LOOSE, COUNTER	BY OWNER
③	SEAT COVER DISPENSER	3" RECESS	5847
④	TOILET TISSUE DISPENSER - DOUBL ROLL	SURFACE	5241
⑤	FRAMED MIRROR - 18 X 36	TTL, SURFACE CONCEALED FASTENERS	780
⑥	36" GRAB BAR	SURFACE, CONCEALED 250# LOAD	832 + MOUNTING KIT
⑦	42" GRAB BAR	SURFACE, CONCEALED 250# LOAD	832 + MOUNTING KIT

NOTE: SEE SHT. A1.1 FOR HANDICAPPED ACCESSIBLE MOUNTING HEIGHTS AND CLEARANCES



NOTE: ALL ELECTRICAL AND MECHANICAL WORK TO BE COORDINATED BY OWNER AND GC IN THE FIELD. CONTRACTOR RESPONSIBLE FOR MEETING ALL APPLICABLE MECHANICAL AND ELECTRICAL CODE REQUIREMENTS. EXISTING FIRE SPRINKLER TO BE MODIFIED AS REQUIRED UNDER SEPARATE PERMIT.

2 REFLECTED CEILING PLAN
1/8" = 1'-0"

SEE ELECTRICAL DRAWINGS FOR ADDITIONAL REQUIREMENTS AND INFORMATION

ELECTRICAL SYMBOLS LEGEND

- 2X4 LIGHT FIXTURE
- SUPPLY DIFFUSER
- RETURN DIFFUSER
- EMERGENCY LIGHT
- FIRE SPRINKLER (EXISTING)
- EXHAUST FAN / LIGHT COMBO VENT TO EXTERIOR
- EXIT SIGN
- RECESSED DOWN LIGHT
- CEILING OUTLET

SCOPO design group, LLC
Architecture Planning Interiors

1930 San Marco Blvd., Suite 203
Jacksonville, Florida 32207
T 904 253 3902 F 904 253 3906
www.scopodesigngroup.com
AA26001292

PROJECT ARCHITECT
RYAN T. DOWNS, AIA

FLORIDA LICENSE NO. AR92651

PROJECT TEAM

- OWNER**
COMMUNITY REHABILITATION CENTER
904-356-1211
- LANDLORD**
PEARL PLAZA PARTNERS, LLC
904-537-6186
- ARCHITECT**
SCOPO DESIGN GROUP, LLC
904-253-3902
- M/E/P ENGINEER**
THE OHMEGA GROUP, LLC
904-807-6512

DATE	ISSUE
08 JUL 2008	PERMIT

EXISTING CONDITIONS
CRC SANDWICH SHOP
PEARL PLAZA SHOPPING CENTER
5323 SPRINGFIELD AVENUE
JACKSONVILLE, FLORIDA 32208

CONSTRUCTION PLAN
REFLECTED CEILING PLAN
DETAILS AND NOTES

PROJECT NO: 0808
DRAWN BY: JTC
CHECKED BY: RTD
SHEET NO:

A1.2
SHEET

Scopo Design Group, LLC, hereby expressly reserves the rights to this drawing and it is not to be reproduced or copied in any format or manner whatsoever without first obtaining permission and consent.