

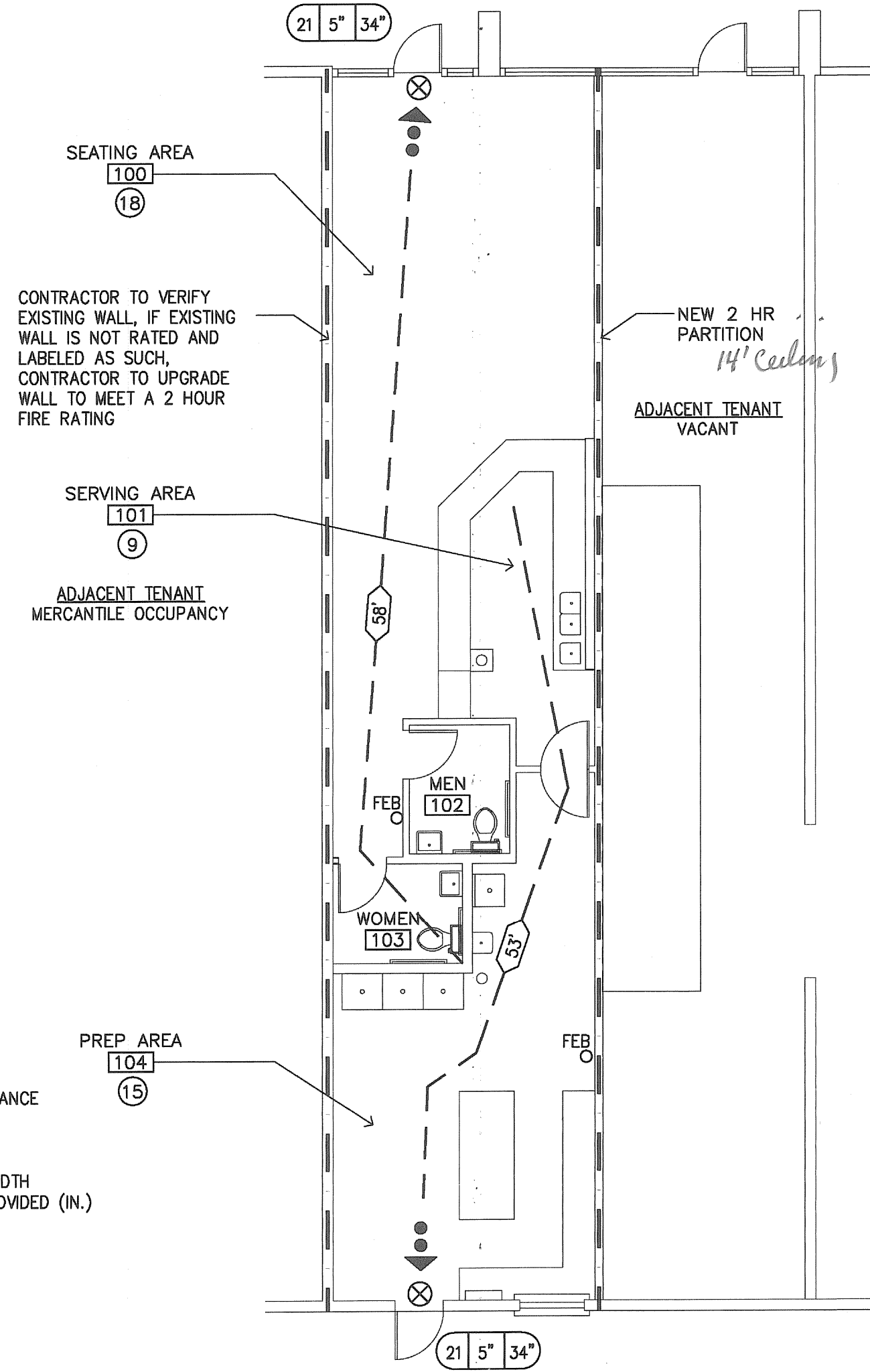
1
A1.1
EXISTING CONDITION/DEMOLITION PLAN
1/8" = 1'-0"

DEMOLITION PLAN GENERAL NOTES

- A. ALL BLDG SYSTEMS, WHERE SPECIFIED ON THE DWGS, MUST BE PROPERLY TERMINATED, CAPPED OR REMOVED.
- B. ALL DEMOLITION WORK ADJACENT TO REMAINING CONSTRUCTION MUST BE DONE IN A WORKMAN LIKE MANNER IN PREPARATION FOR NEW CONSTRUCTION.
- C. GC TO REMOVE ALL DEBRIS FROM SITE AND PROVIDE OWNER WITH LEGAL DISPOSAL CERTIFICATES.
- D. REMOVE ALL EXISTING WALL BASE AND WALL COVERINGS FROM EXISTING WALLS SURFACES THAT ARE SCHEDULED TO REMAIN.
- E. PATCH ALL HOLES LEFT IN EXISTING WALLS FROM REMOVAL OF MATERIALS THAT WILL BE EXPOSED AS PART OF NEW WORK AFTER COMPLETION OF DEMOLITION.
- F. PATCH HOLES IN EXISTING SURFACES RESULTING FROM OR EXPOSED BY REMOVAL OF EXISTING CONSTRUCTION OR INSTALLATION OF NEW M/E/P WORK.
- G. PROTECT EXISTING WALLS, FLOORS, CEILINGS, ETC. TO REMAIN ADJACENT TO AREAS REQUIRING DEMOLITION WORK.
- H. PATCH EXISTING GYP BD SURFACES PRIOR TO PRIMING AND PAINTING. PATCHED AREAS TO MATCH EXISTING TEXTURE.
- J. COORDINATE ALL DEMOLITION WORK WITH NEW CONSTRUCTION AND EXECUTE DEMOLITION TO COMPLETELY ACCOMMODATE NEW WORK AS DELINEATED IN THE PLANS.
- K. OWNER TO HAVE FIRST RIGHT OF REFUSAL FOR ANY ITEMS, FIXTURES, FINISH, EQUIPMENT, ETC. REMOVED FROM THE SITE DURING DEMOLITION.
- L. PATCH AND LEVEL EXISTING CONCRETE SLAB AS REQUIRED AND PREPARE FOR NEW FLOOR FINISH.
- M. GC TO PERFORM WALK THRU OF EXISTING SPACE PRIOR TO SUBMITTING BID.

LIFE SAFETY LEGEND

- ➔ DESIGNATED EXIT
- ⊗ EXIT SIGN
- ⬇ EMERGENCY LIGHT
- 130' EXIT PATH AND TRAVEL DISTANCE
- F.E.B. FIRE EXTINGUISHER BRACKET
- 20' 6" 36" NO. OF OCCUPANTS/ EXIT WIDTH REQ'D. (N.)/ EXIT WIDTH PROVIDED (N.)
- 2 HR. FIRE RATED PARTITION



MAXIMUM OCCUPANT LOAD = 42
* THIS LIFE SAFETY PLAN IS A SCHEMATIC DIAGRAM ONLY, NOT FOR CONSTRUCTION
SEE ELECTRICAL DRAWINGS FOR ADDITIONAL REQUIREMENTS AND INFORMATION

2
A1.1
LIFE SAFETY PLAN
1/8" = 1'-0"

CODE SUMMARY

1. USE AND OCCUPANCY CLASSIFICATION - (FBC-B: Chapter 3)
MERCANTILE: Group M (FBC-B: 309)
2. ALLOWABLE BUILDING HEIGHTS AND AREAS - FBC-B, Chapter 5
Gross Building Area: Existing
Work Area: 1,237 sq ft
No. of Stories Allowed: 1 - Existing (FBC-B: Table 503)
Sq Ft per floor: N/A
Maximum Sq Ft Allowed: Existing Building
Building Height: Existing building, Interior tenant improvement only
No. of units per floor: N/A
Mezzanine: No
3. CONSTRUCTION TYPE - FBC-B, Chapter 6
Type IIB - EXISTING (FBC-B: Table 601) Non-Combustible, Un-Protected
4. FLORIDA ACCESSIBILITY - FBC-B, Chapter 11
ADA Compliant: Yes
5. FIRE RESISTANCE - FBC-B, Chapters 4 & 7
Interior Wall and Ceiling Finish by Occupancy (Table 803.5)
Group M : Unsprinklered
Exit Passage: A Finish
Exit Access: B finish
Rooms enclosed space: C finish
Corridor Fire-Resistance Ratings (Table 1016.1) N/A
6. MEANS OF EGRESS - FBC-B, Chapter 10
TOTAL OCCUPANT LOAD = 42 (MERCANTILE = 30sq/person) (Table 1004.1.2)
Egress Width per Occupant Served: 0.2' per Occupant = 8.4' TOTAL (Table 1005.1)
Spaces with one means of egress: (Table 1014.1) N/A
Max. Travel Distance to an Exit: 150' Feet WITHOUT sprinkler system (Table 1015.1)
7. AUTOMATIC SPRINKLER SYSTEMS - FBC-B: 903
NO EXISTING SPRINKLER SYSTEM IN PLACE
8. PLUMBING FIXTURE - FBC-P, Chapter 4

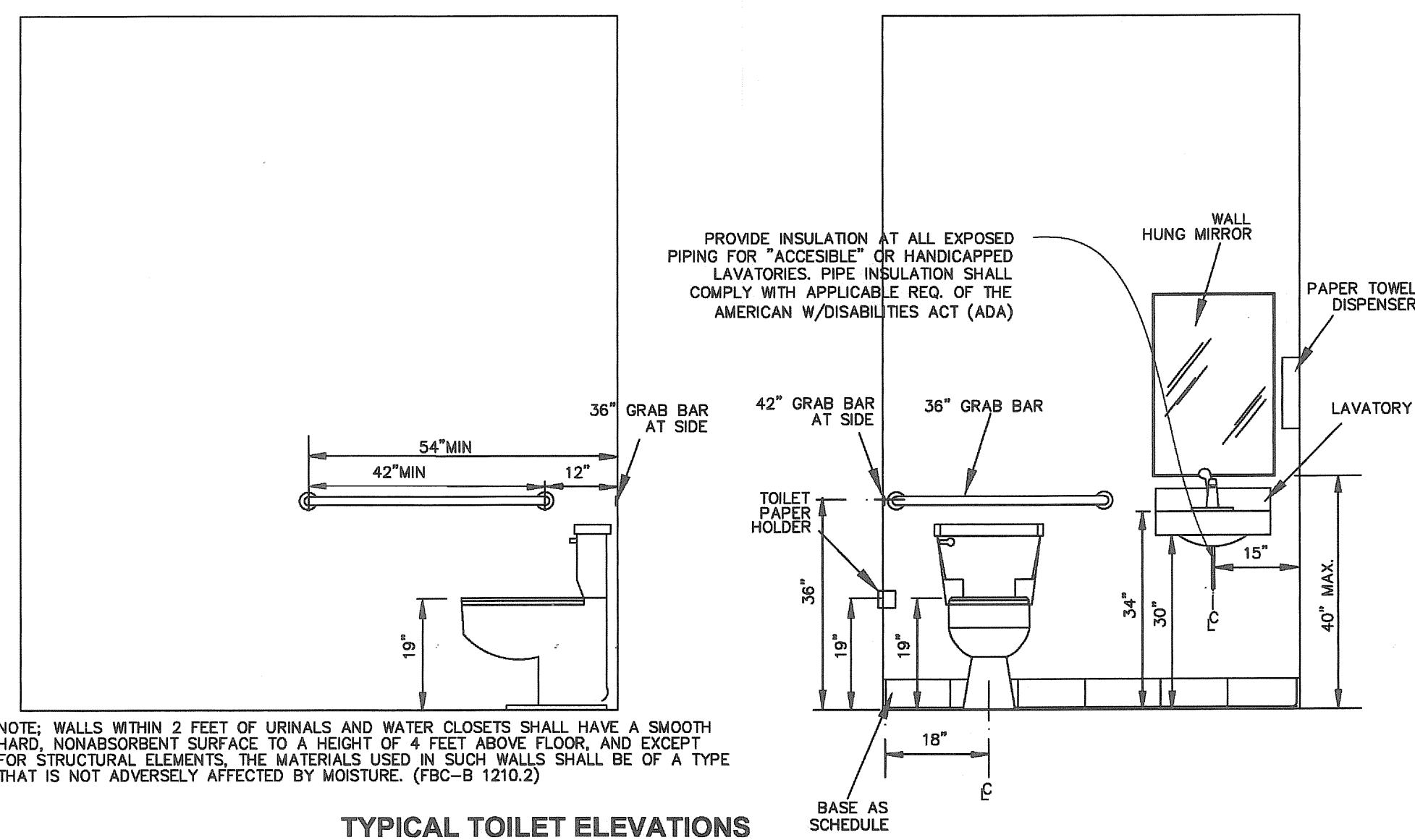
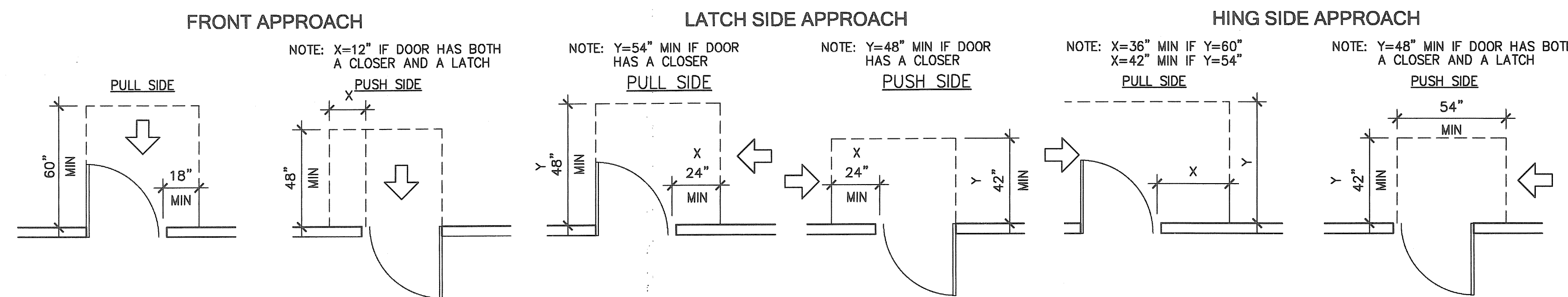
Minimum Number of Required Plumbing Fixtures (FBC-P: Table 403.1)
Fixtures Required Based on total occupancy: 42 persons GROUP M
Water Closets: 1:500 Male / 1:500 Female = 1 Male / 1 Female REQUIRED
Lavatories: 1:750 Male / 1:750 Female = 1 Male / 1 Female REQUIRED
Drinking Fountain: NOT REQUIRED (FBC-P:410.1)
Service Sink: not required
Separate Facilities (FBC-P: 403.2)
Where plumbing fixtures are required, separate facilities shall be provided for each sex.

TOILET ACCESSORIES LEGEND

MOUNTING HT.	FINISH FLOOR	ABBREVIATION	DESCRIPTION
2'-10" MAX	N/A	N/A	LAVATORY
1'-6" TYP	N/A	N/A	FLOOR MOUNTED TOILET
3'-0" / 12" MIN		GB-1	GRAB BARS
3'-6" / 6" / 2'-9" / 2'-9"		GB-2	GRAB BARS
4'-0"		TPD	TOILET PAPER DISPENSER
4'-0"		PTD	PAPER TOWEL DISPENSER
12" ABOVE SINK		SD	SOAP DISPENSER
4'-0" MAX		M-1	TILT MIRROR

APPROACH MINIMUM CLEARANCES

1. APPROACH REQUIREMENTS ARE FOR SWINGING DOORS ONLY
2. DIMENSIONS ARE MEASURED FROM FINISH SURFACE



TYPICAL TOILET ELEVATIONS
NOT TO SCALE

SCOPO
design group, LLC
Architecture Planning Interiors
1930 San Marco Blvd., Suite 203
Jacksonville, Florida 32207
T 904 253 3902 F 904 253 3906
www.scopodesigngroup.com
AA26001292

PROJECT ARCHITECT
RYAN T. DOWNS, AIA
FLORIDA LICENSE NO. AR82651

PROJECT TEAM

OWNER
COMMUNITY REHABILITATION CENTER
904-358-1211
LANDLORD
PEARL PLAZA PARTNERS, LLC
904-537-6186
ARCHITECT
SCOPO DESIGN GROUP, LLC
904-253-3902
M/E/P ENGINEER
THE OHMEGA GROUP, LLC
904-807-6512

DATE	ISSUE
08 JUL 2008	PERMIT

EXISTING CONDITIONS
CRC SANDWICH SHOP
PEARL PLAZA SHOPPING CENTER
5323 SPRINGFIELD AVENUE
JACKSONVILLE, FLORIDA 32208
EXISTING CONDITIONS PLAN
LIFE SAFETY PLAN
ADA REQUIREMENTS

PROJECT NO: 0808
DRAWN BY: JTC
CHECKED BY: RTD
SHEET NO:
A1.1
SHEET

Scopo Design Group, LLC, hereby expressly reserves the rights to this drawing and it is not to be reproduced or copied in any format or manner whatsoever without first obtaining permission and consent.