

HALSTEADarchitects

Shop Drawing Review Cover Page

Date:

Project Name:

Project No.:

Shop Drawing Description:

The attached submittals have been reviewed by Halstead Architects and conform as follows to the conditions of the contract:

K.P. MEIRING CO *KPM*
 CHECKED BY: _____
 DATE CHECKED: Sep 9, 2010
 REVIEWED NO EXCEPTIONS: _____
 REVIEWED WITH EXCEPTIONS: KPM-Resubmit
 REJECTED RESUBMIT: _____
 The review is only for general conformance with design concepts given in the contract documents. Subcontractor is responsible for dimensions, quantities, coordination with other trades and performing his work in a safe manner. No change to contract requirements is intended.

Note: On 10/11/10 via telephone conversation with Carey, KPM is re-sending this document which includes: 1) Revise Counter Top Drawing, 2) Revised HPL Color 3) Approve pull drawing and 4) Approved Toe Kick Drawing.

HALSTEADarchitects

APPROVED

AS NOTED

RESUBMIT

REJECTED

Project # _____

Project _____

Submittal # _____

Date _____

Checked By _____

Notes:

From: Susan Calhoun [scalhoun@pihdc.org]
Sent: Thursday, October 07, 2010 1:58 PM
To: kenmeiring@kpmeiring.com
Subject: RE: Counter Top Color
By Jove I think this will work. Yay.

Susan

Partners In Housing...eliminating barriers to safe affordable housing since 1993...

From: kenmeiring@kpmeiring.com [mailto:kenmeiring@kpmeiring.com]
Sent: Thursday, October 07, 2010 1:49 PM
To: Susan Calhoun
Subject: Fw: Counter Top Color

Here is the alternative color they submitted

Sent from my Verizon Wireless BlackBerry

From: "carey" <carey@shrivercompanies.com>
Date: Thu, 7 Oct 2010 11:53:11 -0500
To: <kenmeiring@kpmeiring.com>
Subject: Counter Top Color

Ken,

Attached is a sample of the granite color called Butterum Granite. This color has an internal composition that would actually show less scratches. A sample of this chip was overnighted to you on September 2, 2010 with all the other samples. The number is 7732-58. If you have any questions, please contact me.

Thanks,
Carey Shriver

This message has been scanned for viruses and dangerous content by SAFEGuardMail.com and is believed to be clean. Contact postmaster@safeguardmail.com with any problems or questions regarding the delivery of this message.

Message ID: o97Grvmk025937

[Mark this message as SPAM & BLOCK this sender](#)

This message has been scanned for viruses and dangerous content by SAFEGuardMail.com and is believed to be clean. Contact postmaster@safeguardmail.com with any problems or questions regarding the delivery of this message.

Message ID: o97HuOOI021392

[Mark this message as SPAM & BLOCK this sender](#)

COUNTERTOP SAMPLES

PATTERN	DESCRIPTION	BRAND
7732-58	Butterum Granite	Formica
7220-58	Tundra Terra	Formica
4663-60	Tawny Legacy	Wilson Art
4761-60	Mystique Mount	Wilson Art
1530-60	Beige	Wilson Art
1572-60	Antique White	Wilson Art
1573-60	Frosty White	Wilson Art
1595-60	Black	Wilson Art
1763-60	Brune Slate	Wilson Art
1786-60	Verdi Oxide	Wilson Art
1787-60	Oxide	Wilson Art
1792-60	Nirvana	Wilson Art
2932-60	Almond Leather	Wilson Art
4142-60	Grey Glace	Wilson Art
4143-60	Neutral Glace	Wilson Art
4166-60	Pampas	Wilson Art
4168-60	Grey Pampas	Wilson Art
4170-60	Beige Pampas	Wilson Art
4207-60	Fresco	Wilson Art
4550-60	Granite	Wilson Art
4551-60	Blackstar Granite	Wilson Art
4608-60	Caldera Beige	Wilson Art
4621-60	White Nebula	Wilson Art
4622-60	Grey Nebula	Wilson Art
4623-60	Graphite Nebula	Wilson Art
4624-60	Beige Nebula	Wilson Art
4630-60	Cloud Nebula	Wilson Art
4633-60	Natural Nebula	Wilson Art
4654-60	Olive Legacy	Wilson Art
4656-60	Bronze Legacy	Wilson Art
4667-60	Green Tigris	Wilson Art
4669-60	Natural Tigris	Wilson Art
4672-60	Curry Tigris	Wilson Art

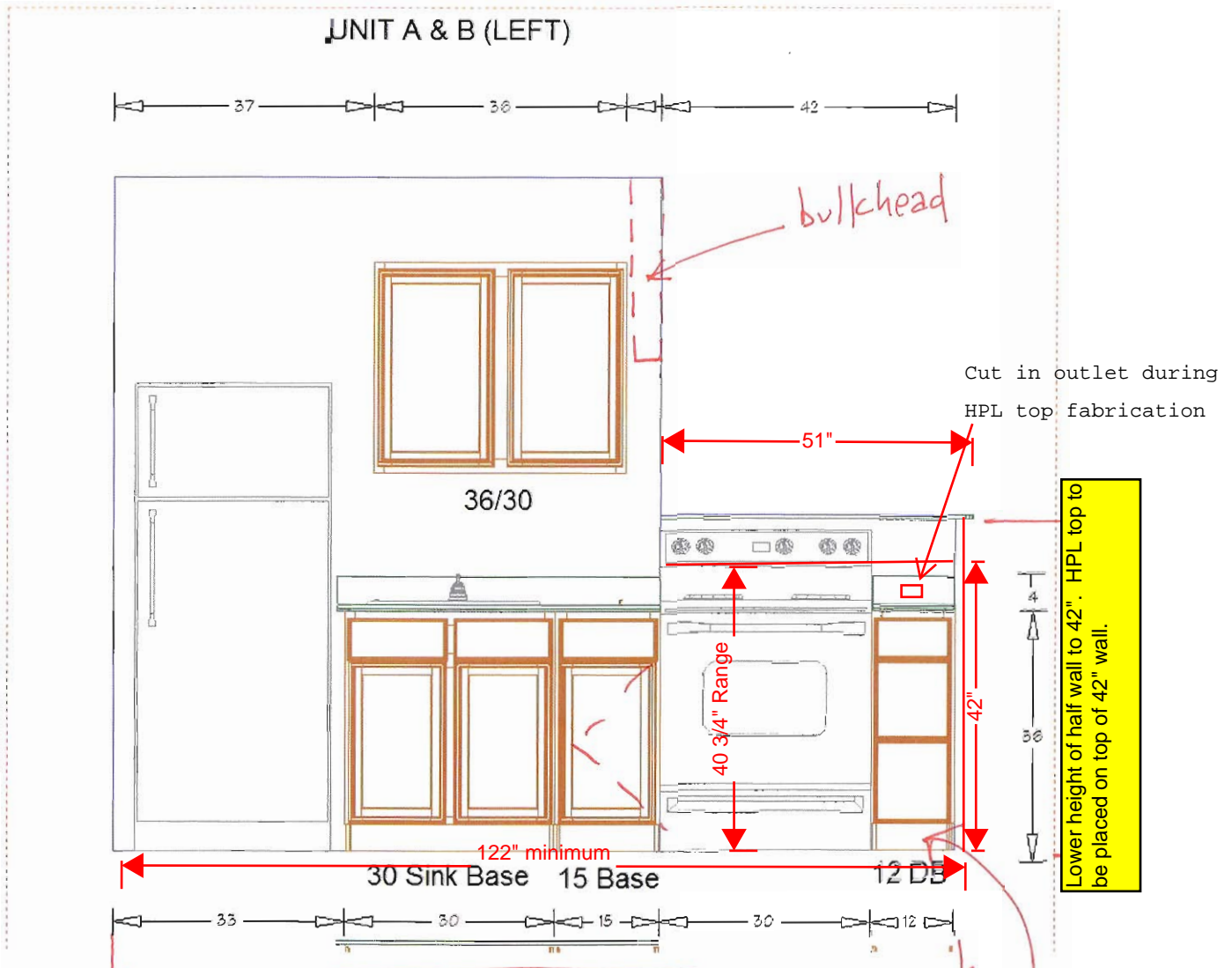
PATTERN	DESCRIPTION	BRAND
4673-60	Saffron Tigris	Wilson Art
4674-60	White Tigris	Wilson Art
4680-60	Lodestone	Wilson Art
4738-60	Ochre Roletta	Wilson Art
4746-60	Woolamai Brush	Wilson Art
4757-60	Mystique Moonlight	Wilson Art
4758-60	Mystique Dusk	Wilson Art
4759-60	Mystique Marine	Wilson Art
4760-60	Mystique Night	Wilson Art
4762-60	Mystique Dawn	Wilson Art
4763-60	Mystique Marsh	Wilson Art
4779-60	Pewter Brush	Wilson Art
4783-60	White Tigris	Wilson Art
4794-60	Windswept Bronze	Wilson Art
4795-60	Windswept Pewter	Wilson Art
4796-60	Burnished Chestnut	Wilson Art
4798-60	Burnished Ember	Wilson Art
4810-60	Titanium EV	Wilson Art
4811-60	Silicon EV	Wilson Art
4812-60	Radium EV	Wilson Art
4813-60	Nickel EV	Wilson Art
4814-60	Tungston EV	Wilson Art
4823-60	Antique Brush	Wilson Art
4841-60	Desert Zephyr	Wilson Art
4842-60	Canyon Zephyr	Wilson Art
4843-60	Misted Zephyr	Wilson Art
4844-60	Loden Zephyr	Wilson Art
4845-60	Twilight Zephyr	Wilson Art
4846-60	Morro Zephyr	Wilson Art
D30-60	Natural Almond	Wilson Art
D50-60	Khaki Brown	Wilson Art
D354-60	Designer White	Wilson Art
D403-60	White Sand	Wilson Art

APPROVED
By Kenneth P Meiring at 4:56 pm, Oct 11, 2010

NOT APPROVED

Due to long lead time, this previously approved HPL is not approved. In lieu of this selection, the Butterum Granite #7732.58 has been substituted.

****ALL POLISHED FINISHED, DARK SOLIDS, AND DARK PATTERNS ARE NOT WARRANTED AGAINST SCRATCHES, AND CLAIMS WILL NOT BE ACCEPTED**



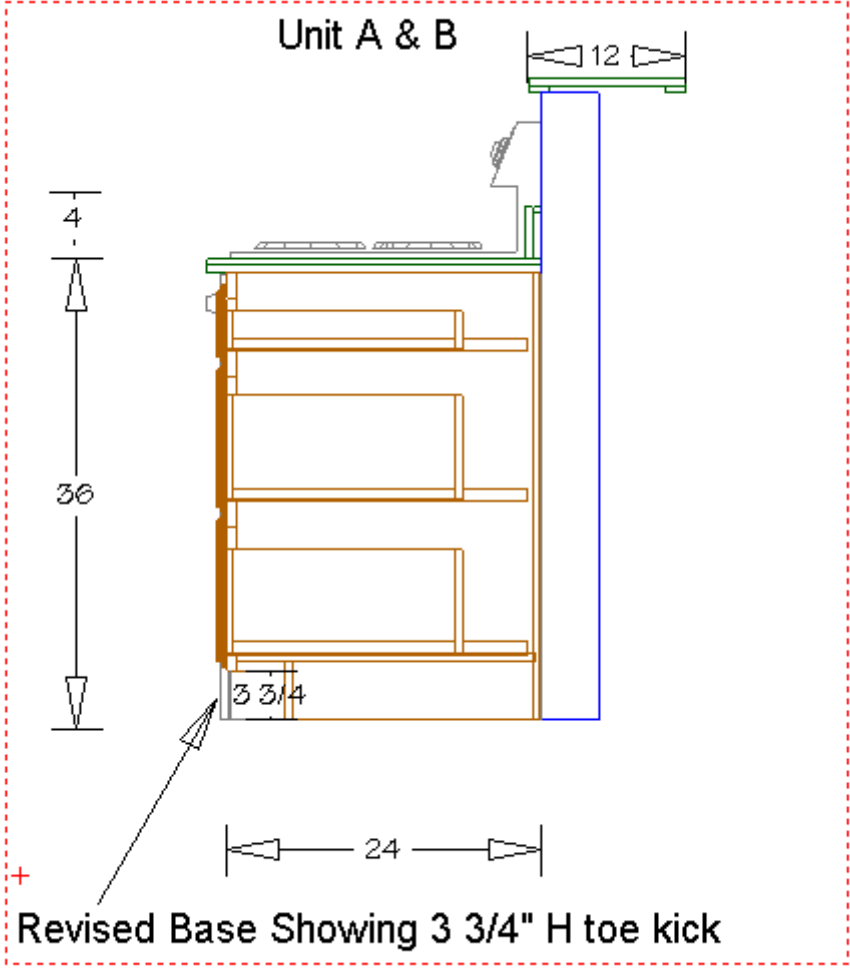
Framing must be a minimum of 122" from existing wall to end of half wall. Half wall and HPL on top of half wall to be standard for all Type A rooms.

Proposed

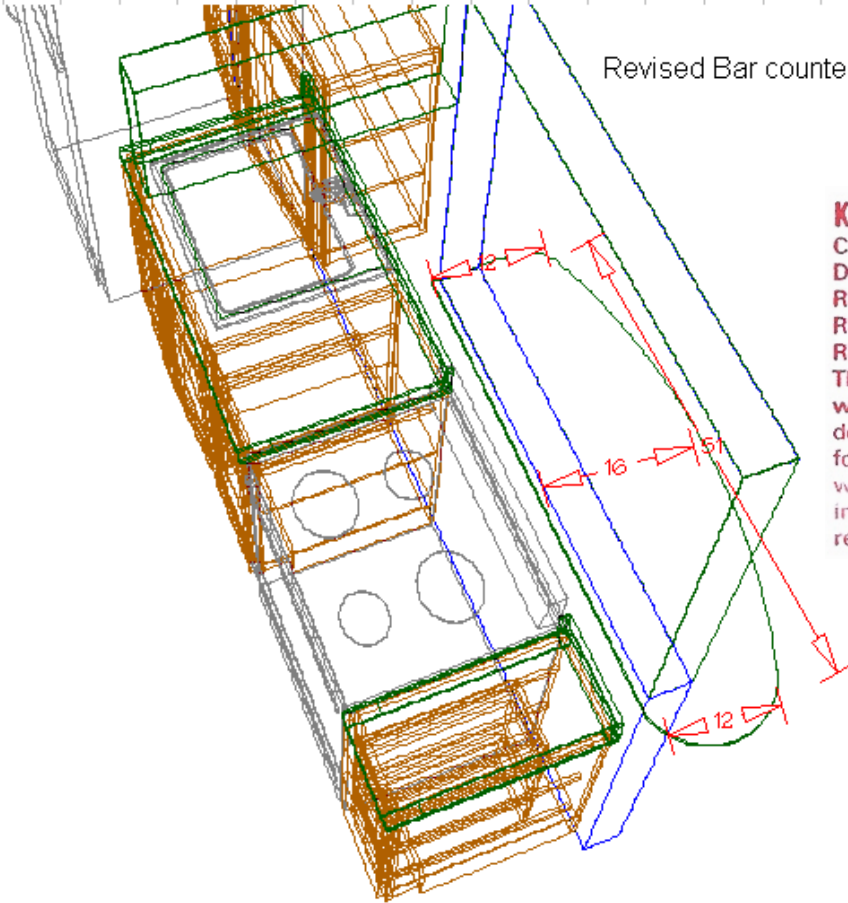
* PROVIDE DOOR / DRAWER
PULL CUT SHEETS (TYPICAL)

TOP kick
to match
cabs.

Revised Toe Kick for Unit A & B



Revised Bar countertop for Units A & B



K.P. MEIRING CO

KPM

CHECKED BY: _____

DATE CHECKED: October 7, 2010

REVIEWED NO EXCEPTIONS: KPM

REVIEWED WITH EXCEPTIONS: _____

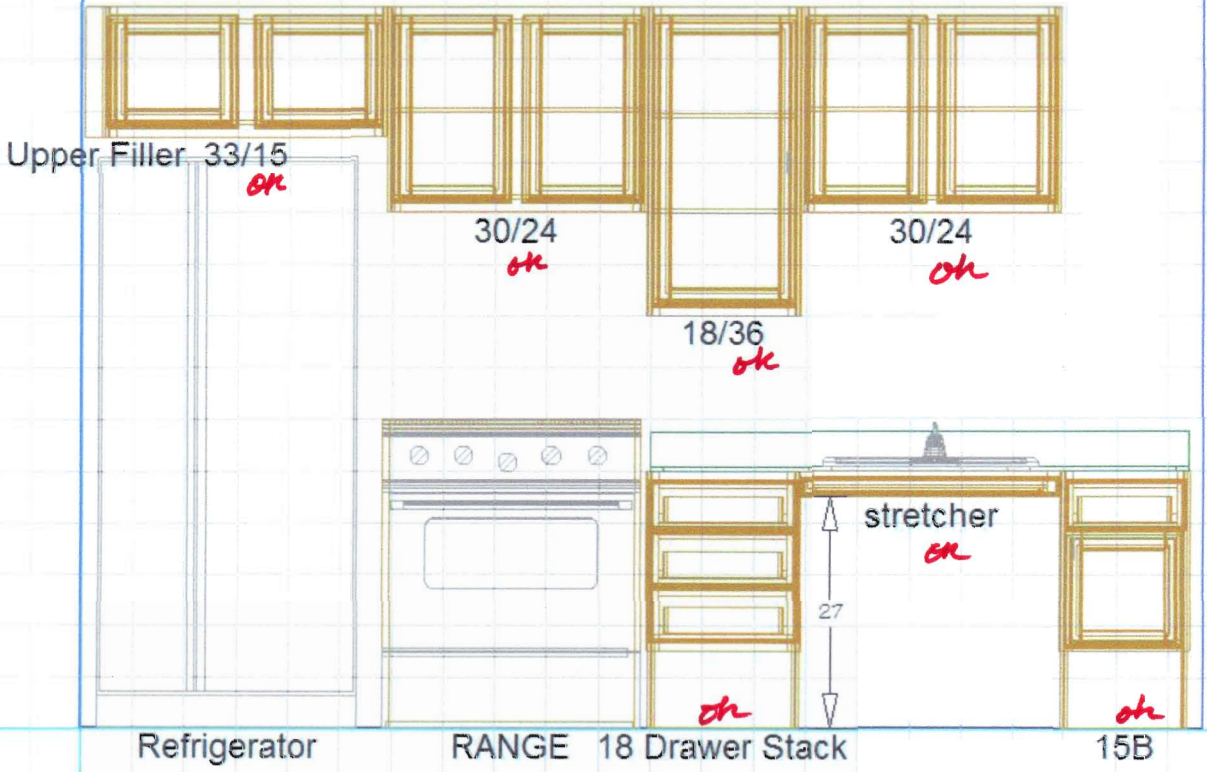
REJECTED RESUBMIT: _____

The review is only for general conformance with design concepts given in the contract documents. Subcontractor is responsible for dimensions, quantities, coordination with other trades and performing his work in a safe manner. No change to contract requirements is intended.

ST GEORGE
 FIELD MEASUREMENTS 9/8/10 MM
 IN ACTUAL UNITS 17 & 18



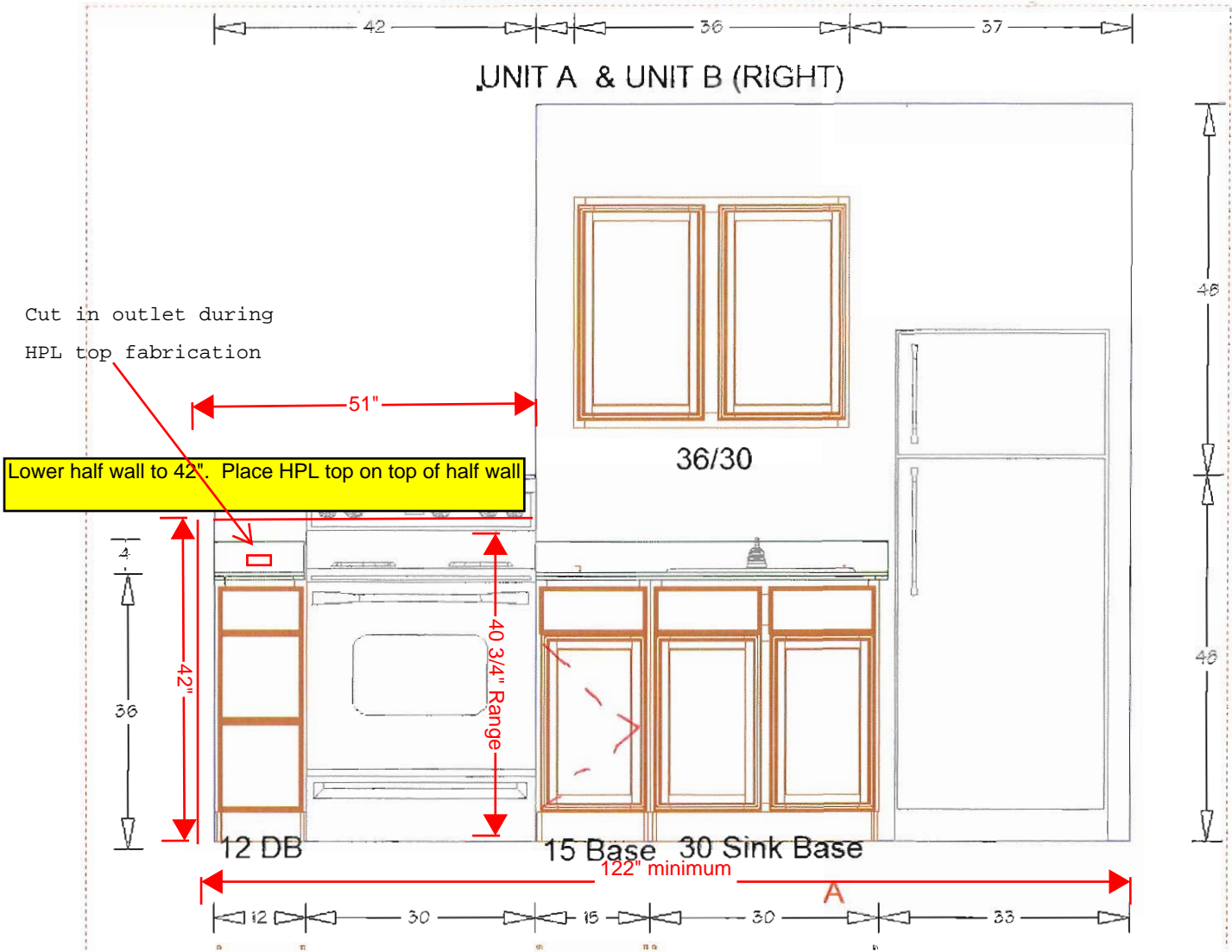
UNIT C (ADA) LEFT & RIGHT OPP



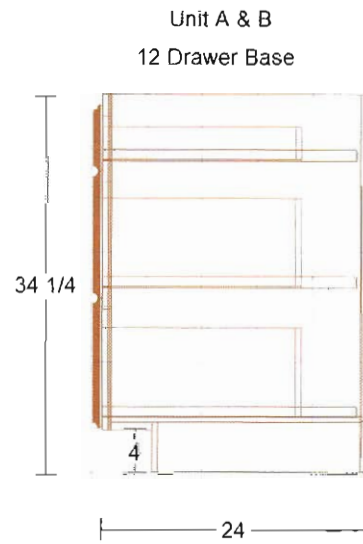
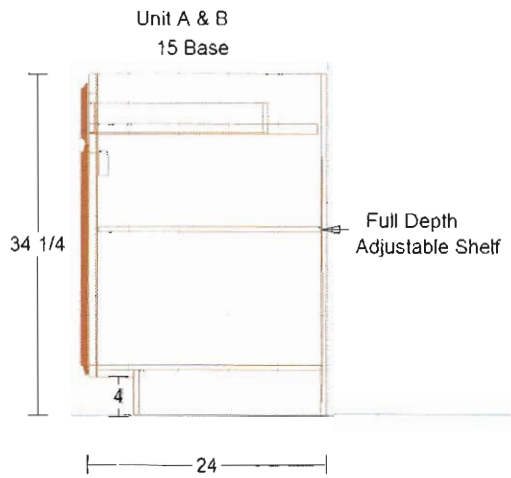
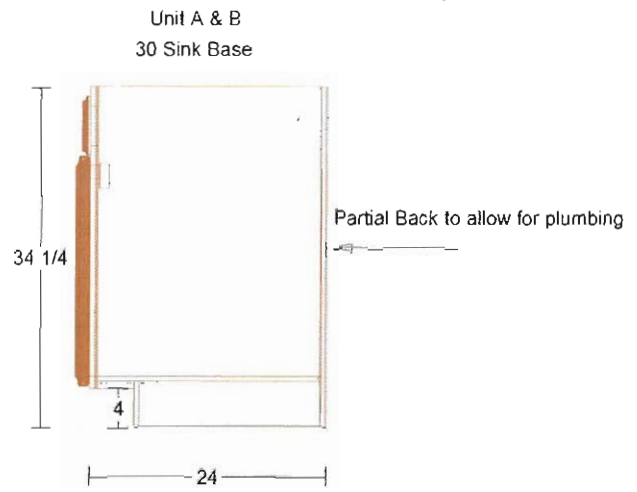
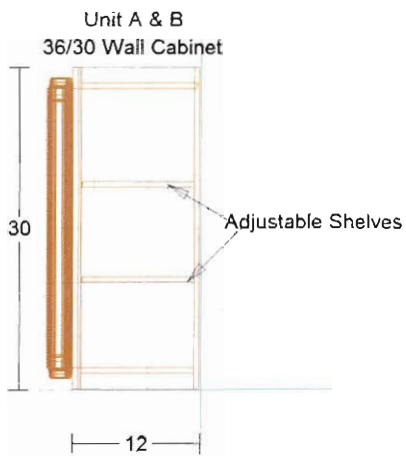
10'-8 1/2"
 ACTUAL 11'-3 1/2"

→ IF BATHROOM IS BUILT PER PLAN
 LAYOUT SHOULD BE OK
 (COULD ADD 3 1/2" TO BATHROOM AREA
 TO CUT DOWN ON FILLER SIZES IN KIT)

UNIT A & UNIT B (RIGHT)



* See A/B left

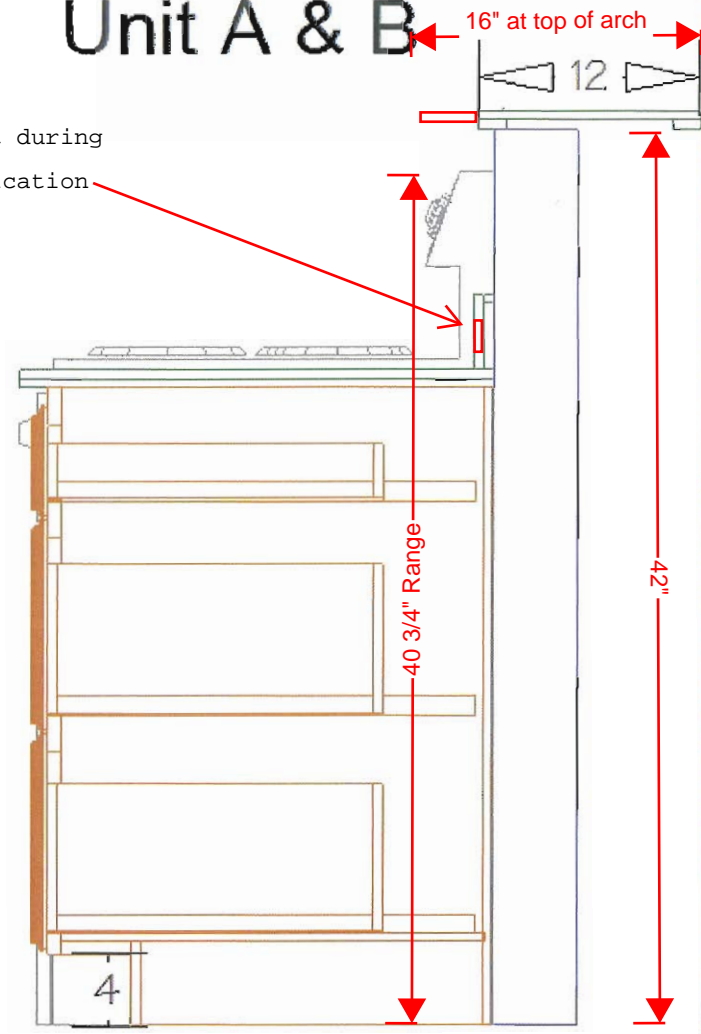
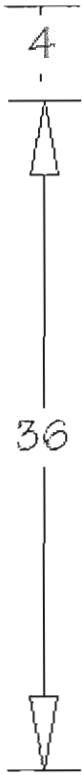


Unit A & B

Cut in outlet during
HPL top fabrication

16" at top of arch

12

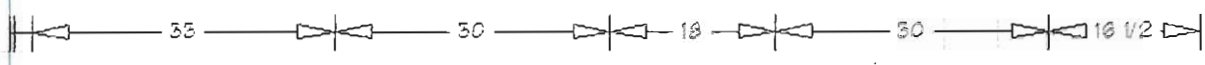


40 3/4" Range

42"

4

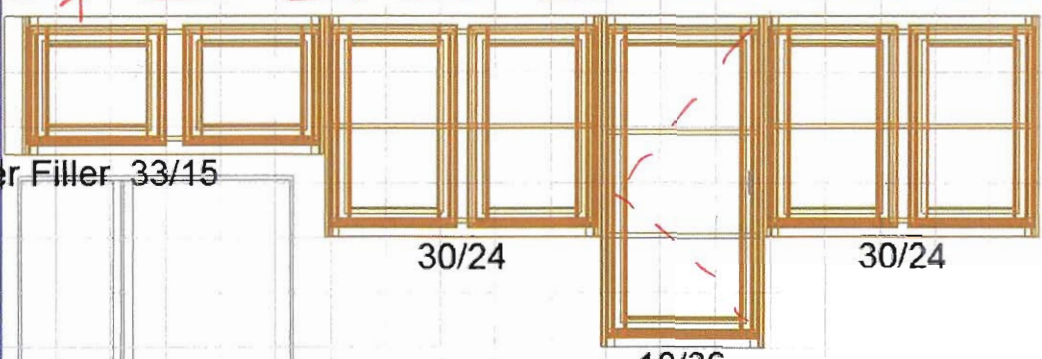
24



UNIT C (ADA) LEFT

dropped ceiling/bulkhead VIF.

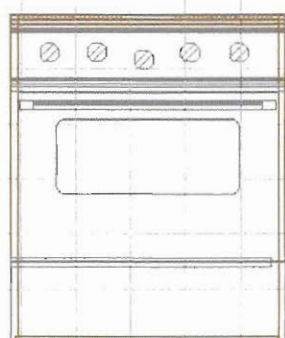
Upper Filler 33/15



30/24

18/36

30/24



Refrigerator

RANGE

18 Drawer Stack

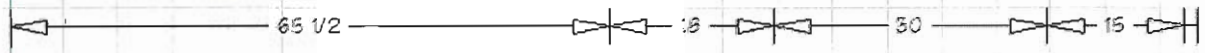


stretcher

27

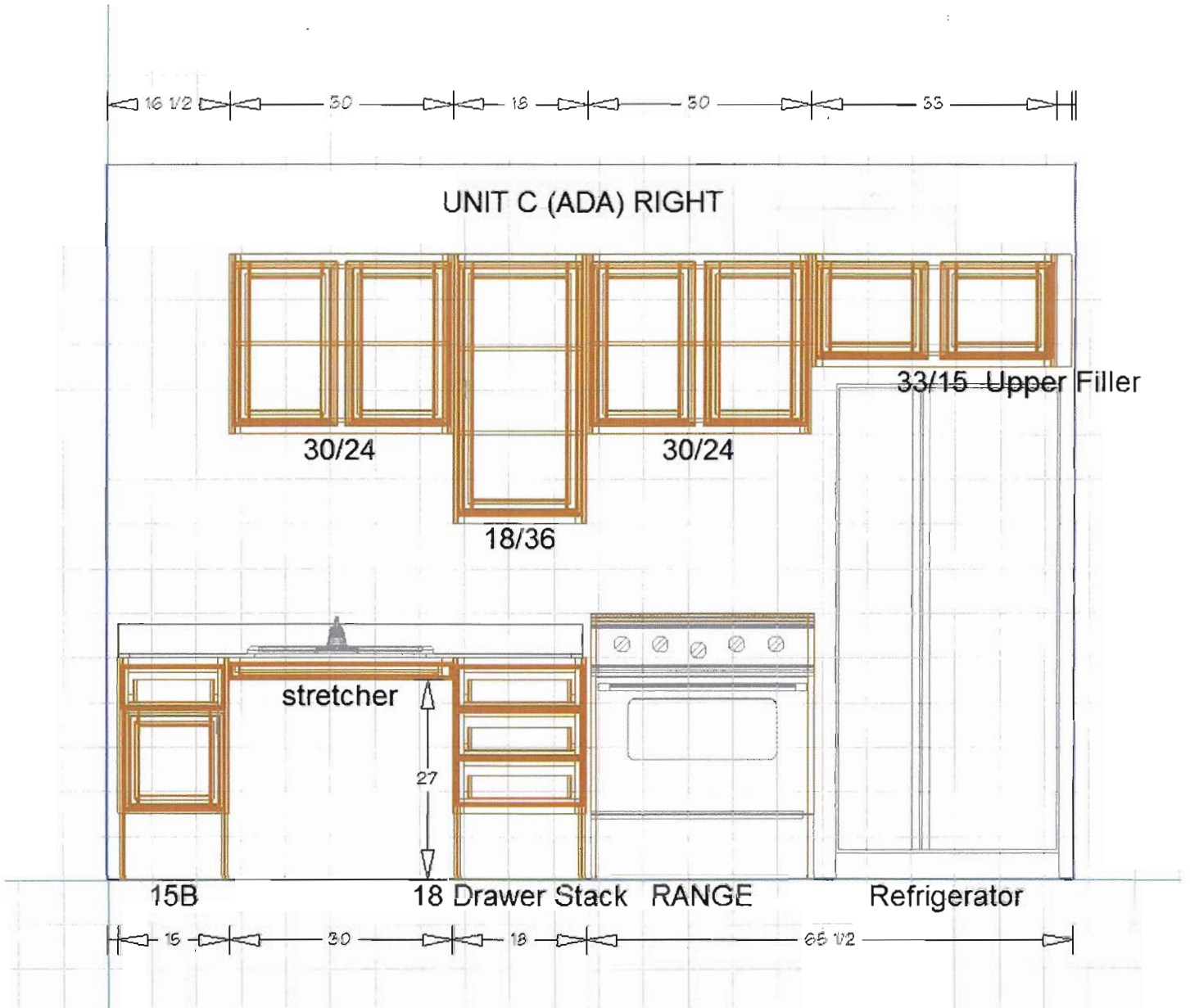
open

15B



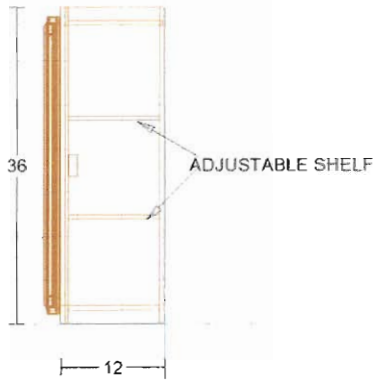
V.I.F.

top kick to match cabs.

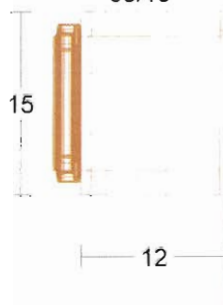


* see unit C(ADA) LEFT

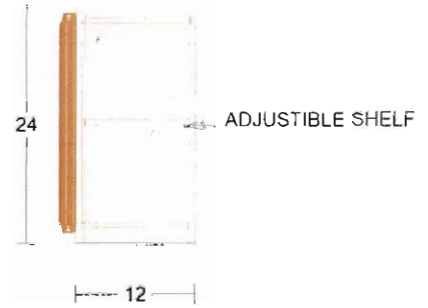
UNIT C (ADA) 18/36 WALL CABINET



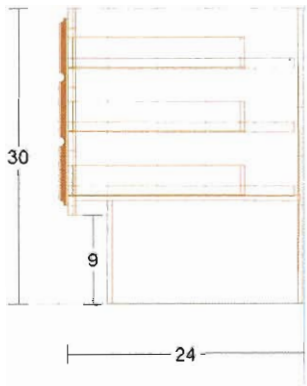
UNIT C (ADA)
33/15



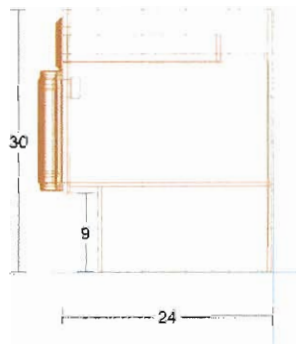
UNIT C (ADA)
30/24 WALL CABINET



UNIT C (ADA) DRAWER BASE



UNIT C (ADA)
15 BASE



S271-96BC



4-1/8" Overall Length Steel Wire Cabinet
Pull. Holes are 96mm center-to-center.
Packaged with two 8/32" x 1" screws.
Finish: Brushed Chrome

Effective Date: 9/29/09

Material Safety Data Sheet

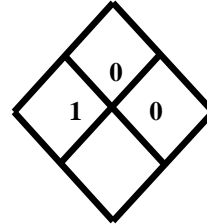
MSDS No: 6287

1. PRODUCT IDENTIFICATION

Trade Name: SWIFT® PA058

Chemical Family: Aqueous Adhesive

Intended Use: Packaging Adhesive



NFPA RATING

Health:	1
Flammability:	0
Reactivity:	0
Personal Protection:	

HMIS RATING

2. COMPOSITION / INFORMATION ON INGREDIENTS

O S H A	CAS No.	CHEMICAL IDENTITY	EXPOSURE LIMITS				CARCINOGEN STATUS			
			ACGIH		OSHA		MFR.	IARC	NTP	OSHA
			TWA	STEL	PEL	STEL				
	7732-18-5 Common Name: Concentration	Water Water 40.00 - 50.00 % by wt	NE	NE	NE	NE	NE	NR	NR	NR
	85-68-7 Common Name: Concentration	1,2-Benzenedicarboxylic Acid, Butyl Phenylmethyl Ester Butyl Benzyl Phthalate 3.00 - 7.00 % by wt	NE	NE	NE	NE	NE	NR	NR	NR
	Proprietary Concentration	Polymer Solids 50.00 - 60.00 % by wt	NE	NE	NE	NE	NE	NR	NR	NR

NE = Not Established NR = Not Reviewed

3. HAZARDS IDENTIFICATION

Emergency Overview: Appearance: White Liquid, Slight acetic odor.

Vapors may cause eye irritation. Vapors are irritating to the respiratory tract. Contact may cause skin irritation.

Route(s) of Entry: Inhalation, skin and eye contact.

Acute Exposure:

EYES: Direct contact with this material may cause eye irritation including tearing and redness.

INHALATION: Inhalation of vapor or aerosol causes irritation of the respiratory tract (nose, throat, and lungs).

SKIN: Contact may cause skin irritation.

Effective Date: 9/29/09

INGESTION: No hazard in normal industrial use.

Chronic Exposure: Prolonged or repeated contact with skin may cause irritation and dermatitis (inflammation).

Carcinogenicity: This material does not contain 0.1% or more of any chemical listed by the International Agency for Research on Cancer (IARC), the National Toxicology Program (NTP), or regulated by the Occupational Safety and Health Administration (OSHA) as a carcinogen.

4. FIRST AID MEASURES

Eye Contact: Immediately flush eyes with large quantities of clean water for at least 15 minutes. Get immediate medical attention.

Skin Contact: Wash skin with soap and water. Remove contaminated clothing. Get medical attention if irritation develops or persists. Wash contaminated clothing before reuse.

Ingestion: Give the victim one or two glasses of water or milk to drink. Never give anything by mouth to an unconscious person. IMMEDIATELY SEEK MEDICAL ATTENTION.

Inhalation: Remove affected individual(s) to fresh air. Seek medical attention if breathing difficulty develops.

5. FIRE FIGHTING MEASURES

Flash Point:	Not applicable
Flammable Limits in Air (Lower):	Not applicable
Flammable Limits in Air (Upper):	Not applicable
Autoignition:	Not applicable

Fire Fighting Extinguishing Media: Use carbon dioxide, foam, dry chemical or water fog to extinguish fire.

Fire Fighting Equipment: Wear self-contained breathing apparatus (SCBA) and full fire-fighting protective clothing. Thoroughly decontaminate all protective equipment after use.

Fire Fighting Instructions: Containers of this material may build up pressure if exposed to heat (fire). Use water spray to cool fire-exposed containers.

Fire and Explosion Hazards: This material will not burn unless it is evaporated to dryness. Closed containers may rupture when exposed to extreme heat.

Hazardous Combustion Products: Irritating and toxic gases, vapors, and dusts may be generated and released during combustion.

6. ACCIDENTAL RELEASE MEASURES

Accidental Release Measures: Barricade the area to restrict access. **SMALL SPILL:** Absorb the liquid with inert material (such as dry sand or earth) and place it in a chemical waste container. **LARGE SPILL:** Persons not wearing protective equipment (see Section 8) should be evacuated from area of spill until cleanup has been completed. Stop leak at source when it is safe to do so. Dike and pump the liquid into waste containers. Prevent spilled material from 1) contaminating soil, 2) entering sanitary sewers, storm sewers, and drainage systems, and 3) entering bodies of water or ditches that lead to waterways. After clean-up, wash the contaminated area with detergent and water.

7. HANDLING AND STORAGE

Signal Word: C A U T I O N

Handling Information: An eyewash station and a safety shower should be readily accessible to workers wherever this material is stored or used.

Storage Information: Keep from freezing. Store in a dry area.

8. EXPOSURE CONTROLS / PERSONAL PROTECTION

Exposure Guidelines: There are no Occupational Safety and Health (OSHA) Permissible Exposure Limits (PEL) or American Conference of Governmental Industrial Hygienists (ACGIH) Threshold Limit Values (TLV) or Short Term Exposure Limits (STEL) established for the component(s) of this product.

Engineering Controls: Good general ventilation should be sufficient to control airborne levels of irritating vapors.

Eye Protection: Wear 1) safety glasses with side shields and a faceshield or 2) goggles and a faceshield.

Skin Protection: Nitrile, neoprene®, or rubber gloves should provide protection against skin contact.

Respiratory Protection: Respiratory protection is not generally required during normal use and handling. The need for respiratory protection should be evaluated if this material is sprayed or heated in poorly ventilated areas.

9. PHYSICAL AND CHEMICAL PROPERTIES

Color:	White
Odor:	Slight acetic
Odor Threshold:	Not available
Physical State:	Liquid
Solubility in Water:	Dispersible
Viscosity:	Not available
Vapor Pressure:	Not available
Specific Gravity:	1.1 (Water = 1) at 25°C (77 °F)
Boiling Point:	> 212° F (> 100 °C) Water
Melting Point:	Not available
Freezing Point:	< 32°F (< 0 °C) Water
Evaporation Rate:	< 1 (BuAc=1)
Vapor Density:	> 1 (AIR=1)
% Volatile:	42 - 44 %
pH:	4.5 - 6
Coefficient of water/oil:	Not available

10. STABILITY AND REACTIVITY

Stability: Stable at normal temperatures and storage conditions.

Incompatibility: No incompatibilities have been identified.

Hazardous Decomposition Products: Thermal decomposition may produce various hydrocarbons and irritating, acrid vapors. Acetic acid

Effective Date: 9/29/09

Acrolein

Hazardous Polymerization: Hazardous polymerization will NOT occur.**Conditions to Avoid:** Freezing temperatures (less than 32°F or 0°C).**11. TOXICOLOGICAL INFORMATION****Acute Eye Toxicity:** Butyl Benzyl Phthalate: (rabbits) 24 hr. exposure, Draize Average, 1.4 / 110; EEC Corneal Opacity, 0.0, Iris, 0.0.**Acute Skin Toxicity:** Butyl benzyl phthalate: dermal LD50 (rat), 6.7 g / kg; LD50 (rabbit), >10 mg / kg. Skin irritation (rabbits), 24 hr exposure, Draize Average, 0.7 / 8.0; EEC, Erythema, 0.6, Edema, 0.1.**Acute Inhalation Toxicity:** Butyl benzyl phthalate: inhalation LC50 (rat), >6.7 mg / L / 4 hr.**Acute Oral Toxicity:** Butyl benzyl phthalate: oral LD50 (rat), 2.3 - 20.4 g / kg.**Subchronic:** A number of subchronic toxicity studies with Butyl Benzyl Phthalate, ranging from 1 to 26 weeks in duration, have been conducted separately or as pilot studies for subsequent chronic studies. Rats and mice given this material in the diet showed body weight and organ weight changes and, in some studies, effects on liver, pancreas or blood tissue at high doses. Testicular effects were noted in male rats at most of the higher dosages tested. In a 3-month inhalation study, rats exposed to this material had liver and kidney weight differences. Higher concentrations in the 4-week pilot for this study produced spleen and sex organ changes. No adverse effects were noted in a 90-day oral dosing of dogs. In separate studies, there were no microscopic changes observed in the nervous system of rats or chickens following oral administration of this material.**Chronic/Carcinogenicity:** This material does not contain 0.1% or more of any chemical listed by the International Agency for Research on Cancer (IARC), the National Toxicology Program (NTP), or regulated by the United States Occupational Safety and Health Administration (OSHA) as a carcinogen.**Teratology:** Butyl Benzyl Phthalate did not produce birth defects in rabbits following oral dosing. A number of studies in the scientific literature report the presence of tissue and skeletal malformations in the offspring of rats and mice fed or dosed orally with this material throughout or during specific periods of pregnancy. These effects were reported primarily at doses showing or known to cause maternal toxicity. In a 1-generation (2 litter) reproduction study in rats, this material did not produce significant adverse reproductive effects, even though body weight and organ weight changes were noted in the parent animals at the high dosage. Testicular damage, with effects on fertility, were reported in male rats fed very high doses of this material for 10 weeks. A short term reproduction study (OECD protocol) using oral dosing of this material produced reproductive effects on male and female rats only at the highest dose tested.**12. ECOLOGICAL INFORMATION****Ecotoxicity:** Butyl Benzyl Phthalate: LC50 (Fathead minnow), 2.1 mg / L / 96 hr.; LC50 (Daphnia Magna), 3.7 mg / L / 96 hr.**Environmental Fate:** Butyl Benzyl Phthalate released to soil is expected to adsorb and not leach extensively although it has been detected in groundwater. This material when released to aquatic systems will adsorb to sediments.. Biodegradation appears to be the primary fate mechanism. This material is readily biodegraded in activated sludge, semicontinuous activated sludge, salt water, lake water and under anaerobic conditions.**13. DISPOSAL CONSIDERATIONS**

Waste Disposal Method: Not a RCRA hazardous waste. Disposal of this material is not regulated under RCRA. Consult federal, state and local regulations to ensure that this material and its containers, if discarded, is disposed of in compliance with all regulatory requirements.

RCRA Hazard Class: NOT A RCRA HAZARDOUS WASTE: When discarded in its purchased form, this material would not be regulated as a RCRA Hazardous waste under 40 CFR 261.

14. TRANSPORT INFORMATION

DOT / IATA / TDG: Non Bulk

Proper Shipping Name:

NOT REGULATED

DOT: Bulk

Proper Shipping Name:

ENVIRONMENTALLY HAZARDOUS SUBSTANCE,
LIQUID, N.O.S.

Technical Shipping Name (If n.o.s.):

BUTYL BENZYL PHTHALATE

Hazard Class:

9

ID Number:

UN3082

Packing Group:

III

ERG Number:

171

IMDG: Bulk and Non-Bulk

Proper Shipping Name:

ENVIRONMENTALLY HAZARDOUS SUBSTANCE,
LIQUID, N.O.S.

Technical Shipping Name (If n.o.s.):

BUTYL BENZYL PHTHALATE

Hazard Class:

9

ID Number:

UN3082

Packing Group:

III

ERG Number:

171

15. REGULATORY INFORMATION

Occupational Safety and Health Act (OSHA): This material is not classified as hazardous under the criteria of the US Occupational Safety and Health Administration (OSHA) Hazard Communication Standard, 29 CFR 1910.1200.

SARA Title III: Section 304 - CERCLA: Butyl benzyl phthalate (CAS# 85-68-7): Reportable Quantity = 100 lb.

SARA Title III: Section 311/312 - Hazard Communication Standard (HCS): This material is not a hazardous chemical

SARA Title III: Section 313 Toxic Chemical List (TCL): This product does not contain Section 313 Reportable Ingredients.

TSCA Section 8(b) - Inventory Status: All components of this material are listed on the US Toxic Substances Control Act (TSCA) inventory.

TSCA Section 12(b) - Export Notification: This material does not contain any components that are subject to the US Toxic Substances Control Act (TSCA) Section 12(b) Export Notification requirements.

Canadian Inventory Status: All components of this material are listed or exempt from the Canadian Domestic Substances List (DSL).

Canadian WHMIS: This material is not classified as a controlled product under the Canadian Workplace Hazardous Material Information System.

Effective Date: 9/29/09

California Proposition 65: W A R N I N G: This material contains a chemical known to the State of California to cause cancer. The California Safe Drinking Water and Toxic Enforcement Act of 1986 requires that clear and reasonable warning be given prior to exposing any person to this chemical:

Additional Canadian Regulatory Information: This product contains the following chemical(s) listed on the WHMIS Ingredient Disclosure List at or above the specified concentration limit: Butyl Benzyl Phthalate (CAS # 85-68-7)

16. OTHER INFORMATION

MSDS No:	6287
Reason Issued:	Updated
Prepared By:	Product Safety & Compliance Department
Supersedes Date:	06/28/04

Disclaimer: This information is provided in good faith and is correct to the best of Forbo's knowledge as of the date hereof and is designed to assist our customers; however, Forbo makes no representation as to its completeness or accuracy. Our products are intended for sale to industrial and commercial customers. We require customers to inspect and test our products before use and to satisfy themselves as to suitability for their specific applications. Any use which Forbo customers or third parties make of this information, or any reliance on, or decisions made based upon it, are the responsibility of such customer or third party. Forbo disclaims responsibility for damages, or liability, of any kind resulting from the use of this information. THERE ARE NO WARRANTIES OR REPRESENTATIONS, EXPRESS OR IMPLIED, INCLUDING THOSE OF MERCHANTABILITY OR FITNESS FOR A PARTICULAR PURPOSE WITH RESPECT TO THIS INFORMATION OR TO THE PRODUCT IT DESCRIBES. IN NO EVENT SHALL FORBO BE LIABLE FOR SPECIAL, INCIDENTAL, OR CONSEQUENTIAL DAMAGES.



CONCANNON
lumber company

Shriver Companies LLC
18895 Hwy H
Elk Creek, MO 65464

September 01, 2010

Dear Valirea:

Re: Domestic Hardwoods

This letter is to confirm Concannon Lumber Company's lumber contains only domestic hardwoods and will not include imported lumber. If you have questions or need additional information, my contact information is:

Scott Wood
1050 Gridley Street
West Plains, MO 65775
417.257.2054 (phone)
417.257.1804 (fax)
Scott.wood@concannonlumber.com

Best regards,

Scott Wood

CONCANNON LUMBER CO

1050 Girdley Street | West Plains, MO 65775 | P: 417.257.2054 | F: 417.257.1804

www.concannonlumber.com



PRODUCT DATA SHEET

Clear Precatalyzed Lacquer

PC-0090	Gloss (90°)	PC-0030	Satin (30°)
PC-0060	Semi-Gloss (60°)	PC-0020	20°
		PC-0010	Flat (10°)

DESCRIPTION	CHARACTERISTICS	SPECIFICATIONS
<p>This product line represents an intermediate step between our high quality water white lacquers and our extremely durable conversion varnish series. The blending of these two technologies creates a product that demonstrates the ease of application normally associated with lacquer, coupled with performance characteristics resembling the conversion varnishes. This product is a single pack system and requires no additional catalyztion. It is supplied to the customer at application viscosity thereby eliminating the need for the incorporation of additional thinners prior to application. This product meets all of the pertinent government regulations regarding emissions and meets or exceeds the performance parameters outlined by the National Kitchen Cabinet Association and the American Society for Testing and Materials.</p> <p>Product Advantages:</p> <ul style="list-style-type: none"> ➤ HAPs & AIM Compliant ➤ User Friendly ➤ No Catalyst Required ➤ No Critical Recoat Time ➤ Water Clear ➤ Resists Yellowing ➤ Self-Sealing ➤ Meets KCMA and ASTM Performance Requirements When Applied to Manufacturer's Specifications. ➤ Phthalate Free 	<p>Viscosity: 27" #2 Zahn</p> <p>Weight Solids: 27-28%</p> <p>Volume Solids: 20%</p> <p>Weight/Gallon: 7.69-7.74 lbs/gal.</p> <p>Film Hardness: B-HB Overnight</p> <p>Color: 1-2</p> <p>VOC (Actual/Material): 5.03-5.06 lb/gl or 603-606 g/l</p> <p>VOC (Reg/Coating): 5.45-5.48 lb/gl or 653-657 g/l</p> <p>HAPs: .6322-.6580</p> <p>Coverage: 326-333 sq ft at one mil dry film thickness</p> <p>Dry Time: Dust free in 10 minutes. Light sand in 30 minutes. Recoat in 45 minutes.</p> <p>Shelf Life: 6 months if unopened and stored in a cool dry area. Always rotate stock.</p> <p><i>Note: These numbers represent actual control values on a smooth, sanded substrate. Spray techniques, texture, and sealing as well as film thickness may give different results on actual work, but they may be used for comparison. To the best of our knowledge, the above technical data is true and accurate at the date of issuance but is subject to change without prior notice.</i></p>	<p>Surface Preparation: New wood: Remove any dirt, grease, glue or other contaminants and sand wood as required. Moisture content of wood should be 7-9%. Old wood: Strip old finishes completely and remove all contaminants from the surface. Make sure the surface is dry, sand as required. Finish as new work.</p> <p>Material Preparation: This product is prepared at application viscosity and should require no thinning prior to use. However, if the conditions at your facility dictate that a thinner be incorporated, we recommend the use of our SOL-9011 HAPs Free Thinner at levels not to exceed 10% by volume. If conditions dictate that a retarder be added, we recommend our SOL-9012, HAPs Free Industrial Retarder be used at a level not to exceed 5% by volume. Mix this product prior to application. NOTE: Effective dry times will be lengthened if retarder is added Use only Industrial colorants formulated for use in lacquers at levels not to exceed 4% by volume.</p> <p>Application: For optimum performance of this Precatalyzed lacquer, we recommend that it be applied as a self-sealing system. When applied as a self-sealing system, we recommend that the total coating system not exceed three coats, with a final dry film thickness no greater than 3 mils. If a faster drying sanding sealer is required, we recommend the use of our Ultra Seal (US-0300) or Gem Seal Conversion Sealer (210-0008) which should be applied at one coat with a maximum dry film thickness of 1 mil. The sealer coat should be followed by a maximum of two coats of HAPs Compliant Precatalyzed Lacquer to produce a final coating system with a maximum dry film thickness of 3 mils.</p> <p>Clean Up: Use SOL-9011 to clean up all equipment. Dispose of in accordance with Federal, State, and Local regulation regarding pollution.</p>

The following supersedes any provision contained in the forms, letters and papers of your company. This product is designed and intended for professional application only. All products should be thoroughly tested under application conditions prior to use. The information contained herein is believed to be reliable. **HOWEVER, GEMINI MAKES NO WARRANTY CONCERNING THIS PRODUCT, WHETHER EXPRESS OR IMPLIED, INCLUDING THE WARRANTIES OF MERCHANTABILITY OR FITNESS FOR A PARTICULAR PURPOSE.** UNDER NO CIRCUMSTANCES SHALL GEMINI BE LIABLE FOR SPECIAL, INCIDENTAL, CONSEQUENTIAL, OR ANY OTHER DAMAGES FROM ALLEGED NEGLIGENCE, BREACH OF WARRANTY, STRICT LIABILITY, OR ANY OTHER LEGAL THEORY, ARISING OUT OF THE USE OR HANDLING OF THIS PRODUCT. THE SOLE REMEDY OF THE BUYER AND THE SOLE LIABILITY OF GEMINI FOR ANY CLAIMS SHALL BE LIMITED TO THE BUYER'S PURCHASE PRICE OF THE PRODUCT WHICH IS THE SUBJECT OF THE CLAIM OR THE AMOUNT ACTUALLY PAID FOR SUCH PRODUCT, WHICHEVER IS LESS. TECHNICAL ADVICE FURNISHED BY GEMINI SHALL NOT CONSTITUTE AN EXPRESS WARRANTY, WHICH IS EXPRESSLY DISCLAIMED. ALL TECHNICAL ADVICE GIVEN IS ACCEPTED AT THE RISK OF THE BUYER.

CAUTION: DANGER! FLAMMABLE! VAPORS MAY CAUSE FLASH FIRE. VAPOR HARMFUL. HARMFUL OR FATAL IF SWALLOWED. INJURIOUS TO EYES. KEEP OUT OF THE REACH OF CHILDREN! BEFORE using this product it is essential that the "Material Safety Data Sheet" describing the product as well as the "Product Label" be reviewed. If your company does not have such information or has any questions, contact the manufacturer.

Date: April, 2010

Product Performance:

The **KCMA (Kitchen Cabinet Manufacturers Association)** test was conducted with the test panel in a vertical position. Each test panel was prepared as specified in the application instructions above. 3cc's of each chemical were placed on the coated surface and allowed to remain there for a period of 24 hours, with the exception of mustard, which was removed from the panel after one hour.

The **ASTM (American Society for Testing Materials)** test was conducted with the test panel in a horizontal position. Each test panel was coated as specified in the application instructions above. 3cc's of each chemical were placed on the coated surface and contained there by the use of a watch glass for a period of sixteen hours unless otherwise indicated.

The **AWI (Architectural Woodwork Institute) Chemical Resistance Test** is conducted by containing the test panel in a horizontal position while applying 1 milliliter of various chemicals to the surface of the coating. Each chemical is maintained at its respective location on the panel by the use of a watch glass. All chemicals are allowed to remain in contact with the coating surface for a period of 16 hours unless otherwise indicated.

Each chemical is then evaluated for its impact upon the coated surface, which includes such parameters as loss of gloss, discoloration, blistering, and delamination. The chemicals used and their respective effects upon the coating are as follows:

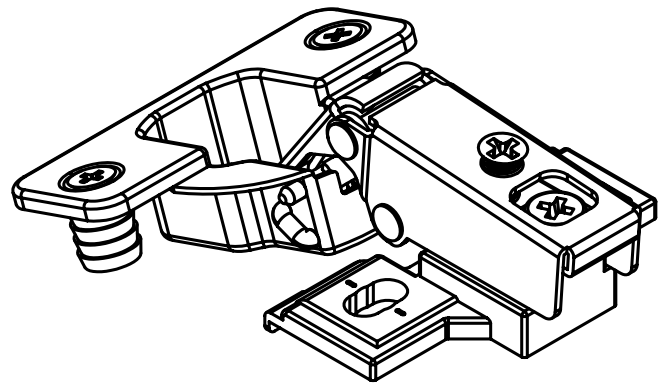
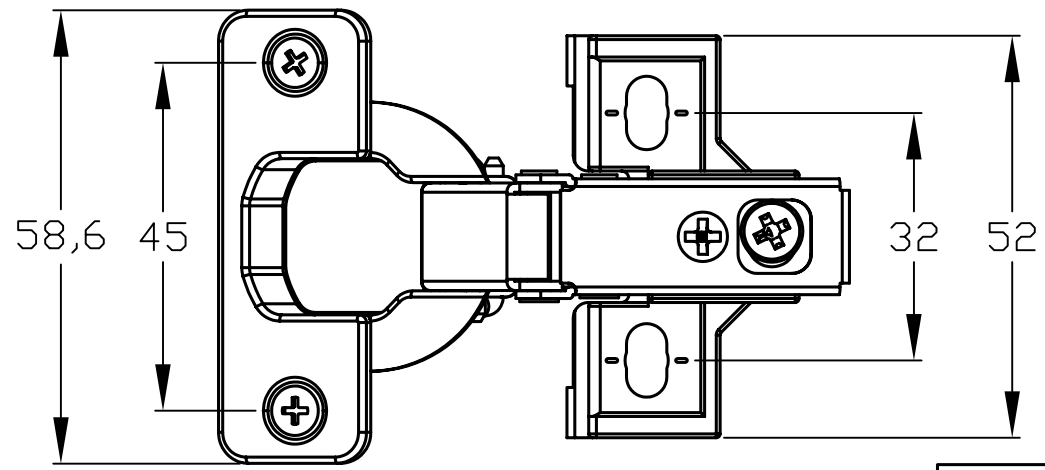
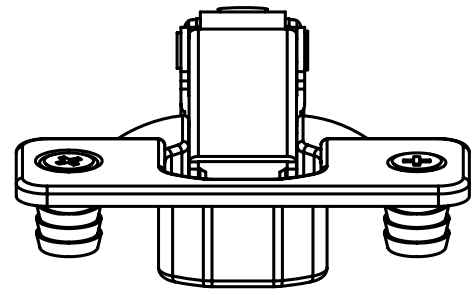
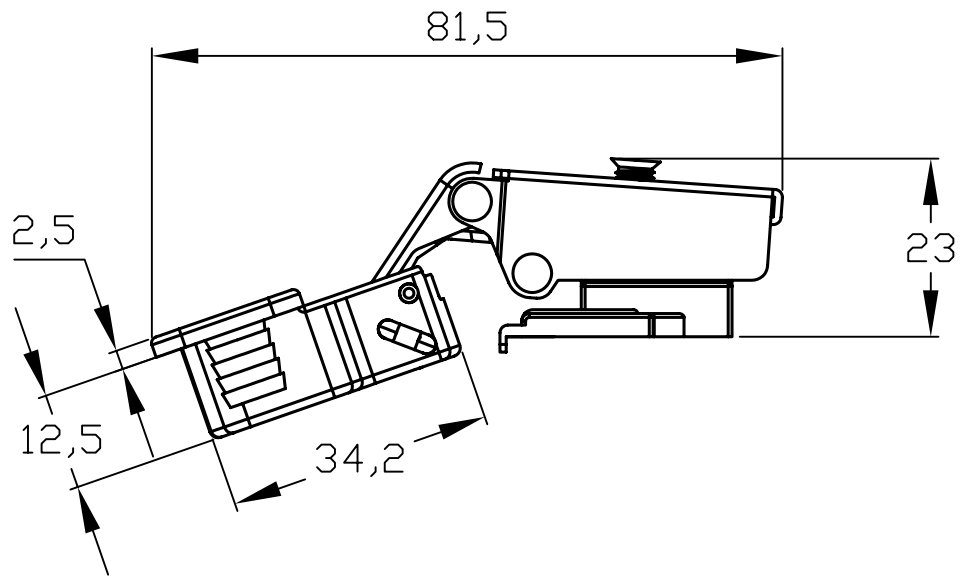
	KCMA Test		ASTM Test		AWI Test	
	Initial Results	Final Results	Initial Results	Final Results	Initial Results	Final Results
Catsup	No Damage	No Damage	No Damage	No Damage	N/A	N/A
Vinegar	No Damage	No Damage	No Damage	No Damage	N/A	N/A
Alcohol	No Damage	No Damage	No Damage	No Damage	N/A	N/A
Olive Oil	No Damage	No Damage	No Damage	No Damage		
2% Ammonia	No Damage	No Damage	No Damage	No Damage	N/A	N/A
Lemon Juice	No Damage	No Damage	No Damage	No Damage		
Coffee	No Damage	No Damage	No Damage	No Damage		
Mustard	No Damage	No Damage	No Damage	No Damage		
Water	No Damage	No Damage	No Damage	No Damage	N/A	N/A
Motor Oil	N/A	N/A	No Damage	No Damage	N/A	N/A
Lighter Fluid	N/A	N/A	No Damage	No Damage	N/A	N/A
1% Palmolive Solution	N/A	N/A	No Damage	No Damage		
1% Tide Solution	N/A	N/A	No Damage	No Damage	N/A	N/A
4% Sodium Hydroxide	N/A	N/A	N/A	N/A		
10% Sodium Hydroxide	N/A	N/A	N/A	N/A		
28% Ammonia	N/A	N/A	N/A	N/A		
10% Sodium Phosphate	N/A	N/A	N/A	N/A		
95% Ethyl Alcohol	N/A	N/A	N/A	N/A		
Tomato Juice	N/A	N/A	N/A	N/A		
50% Sulfuric Acid	N/A	N/A	N/A	N/A		
Nail Polish Remover	N/A	N/A	N/A	N/A		
Glacial Acetic Acid	N/A	N/A	N/A	N/A		

KCMA 9.2 Hot and Cold Check Resistance Test:

All panels passed 21 cold check cycles (cycling from 120 °F. to -5°F. and 70% Relative Humidity to zero Relative Humidity).

KCMA 10.0 Detergent Water Resistance Test:

Passes 24 hours



WEIGHT: 65.1G

DRAWN BY: John Lai	SCALE: 1/1	DATE: 02/23/10
-----------------------	---------------	-------------------

Description:
6-way Cam-Adjustable
125° Face-Frame Hinge
1/2" Overlay With Dowels
200pcs/Ctn

HARDWARE RESOURCES
4319 MARLENA ST, BOSSIER CITY, LA 71111

MATERIAL:

PART NAME:

ITEM NO: 22855-7-000N

PLATING: BN

INTEGRITY TESTING LABORATORIES,

A division of ErgoLabs, Inc.

CLIENT:

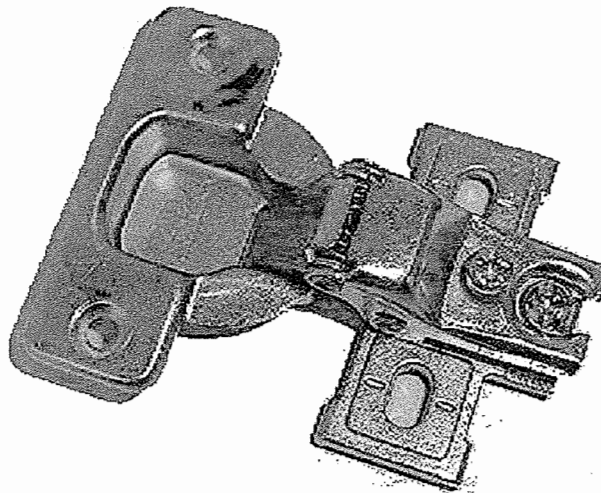
Hardware Resources
P.O. Box 72430
Bossier City, LA 71172

LABORATORY NO: F0212121-3
DATE: December 20, 2002
CLIENT P.O. NO.: letter, D. Goldman
STANDARD: ANSI/KCMA A161.1-95

SAMPLE: EUROPEAN SELF CLOSING HINGE, P/N 22855-000

ABSTRACT

This report serves to document the testing of the above sample to all applicable hinge test paragraphs of ANSI/KCMA A161.1-1995, American national standards for kitchen and vanity cabinets. Test procedures include a door racking and hinge set test, and hinge operating life test. The remainder of this report will show how the hinge samples submitted for testing **met the requirements** needed for conformance to the standard.



Self Closing Hinge, P/N 22855-000

3911 E. LaPalma, Suite E, Anaheim Hills, CA 92807 Phone: (714) 630-2363 Fax: (714) 630-2256

This report applies only to the sample or samples submitted for testing and is not necessarily indicative of the quality or condition of apparently identical or similar products. As a mutual protection to clients, the public, or these laboratories, this report is submitted and accepted for the exclusive use of the client to whom it is addressed, and upon that condition that it not be used, in whole or in part, in any advertising or publicity matter without prior written authorization from these laboratories.

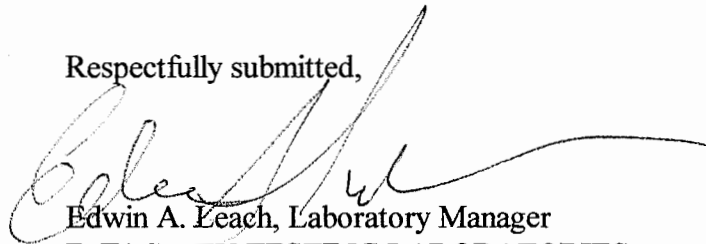
OBSERVATIONS AND RESULTS

LABORATORY DETERMINATION	LABORATORY OBSERVATION	ANSI/KCMA A161.1-95 REQUIREMENT	TEST RESULT
Door Racking and Hinge Permanent Set Test Section 6.1	Vertical Deflection = 0.012"	0.065" maximum vertical deflection after 65 lb. test load.	PASS
Hinge Operating Life Cycle Test Section 6.2	Vertical Deflection = 0.009"	0.065" maximum vertical deflection after 25,000 cycles.	PASS

CONCLUSION

During the execution of the testing program, the model 22855-000 hinge performed well with no structural breakage or failure. This sample submitted for testing exceeded all of the hinge test requirements and **conforms** to ANSI/KCMA A161.1-1995.

Respectfully submitted,



Edwin A. Leach, Laboratory Manager

INTEGRITY TESTING LABORATORIES, a division of ErgoLabs, Inc.



FORMICA® LAMINATE BY FORMICA GROUP MATERIAL SAFETY DATA SHEET



SECTION 1: PRODUCT AND COMPANY IDENTIFICATION

MANUFACTURER

Formica Corporation
10155 Reading Road
Cincinnati OH 45241, USA

COMPANY PHONE NUMBER

1-800-FORMICA™

MANUFACTURER'S EMERGENCY PHONE NUMBER

USA (Chemtrec) 1-800-424-9300
Internationally 1-703-527-3887

PRODUCT NAME

Formica® Brand Laminates

Issue Date

June 29, 2009

Product Codes

DecoMetal, BasicMetal, ColorCore2, Compact,
ColorThru Compact, Access Floor Tiles, Chemtop2, Fire-rated
and High Pressure Laminate

SECTION 2: HAZARDS IDENTIFICATION

EMERGENCY OVERVIEW

No known hazards for material as supplied. During fabrication operations such as sawing, sanding, drilling, routing, cutting, etc. dust consisting of cured resin, paper fiber and minute amounts of formaldehyde are generated at the point of operation. Formaldehyde may be released in minute but detectable amounts when material is shipped or stored in bulk quantities.

Appearance/Odor: Thin to thick, rigid laminate sheets, various thicknesses/colors. No significant odor.

WARNING

SANDING, SAWING, DRILLING, ROUTING, ETC. OF THIS MATERIAL MAY GENERATE AIRBORNE NUISANCE DUST. THIS DUST MAY CAUSE EYE, NOSE, SKIN, AND UPPER RESPIRATORY TRACT IRRITATION. USE OF APPROPRIATE PERSONAL PROTECTION AND/OR ENGINEERING CONTROLS (SUCH AS LOCAL EXHAUST VENTILATION) SHOULD BE EMPLOYED WHENEVER SANDING, SAWING, DRILLING, ROUTING, ETC. THIS MATERIAL.

Potential Health effects: Dust generated during fabrication of this material may cause irritation of the eyes, nose skin and upper respiratory tract. Asthmatic conditions maybe aggravated by the dust generated.

Likely Routes of Exposure: Eye contact, skin contact and inhalation

Eyes: Dust generated during installation or fabricating could cause eye irritation (tears, blurred vision and redness). In case of eye contact with dusts, rinse affected eye for at least 15 minutes with clean water. If irritation persists, seek medical attention.

Skin: The dust generated during installation or fabrication may cause moderate skin irritation. Avoid prolonged skin exposure to dust. Rinse skin with mild soap if contact occurs. If irritation persists, seek medical attention.

Ingestion: Not likely to occur and not expected to cause a significant toxic response. However, ingestion of dust could cause irritation of the mouth, throat and stomach. If this occurs, rinse mouth with clean water. If irritation persists, seek medical attention.

Inhalation: Sanding, sawing, drilling, routing or cutting of this material may generate airborne dust that may cause eye, nose and upper respiratory tract irritation. Use appropriate personal protection and/or engineering controls (such as local exhaust ventilation whenever sanding, routing, sawing, drilling, cutting, etc. on this material.

Medical Conditions Aggravated by Exposure: Dust may cause skin irritation for people with pre-existing skin conditions. Asthmatic conditions may be aggravated by additional dust exposure.

Target Organs: Lungs (from dust generated during fabrication only).

SECTION 3: COMPOSITION/INFORMATION ON HAZARDOUS INGREDIENTS

This product does not contain regulated levels of NTP, IARC, or OSHA listed carcinogens.

COMPONENT	CAS #	% BY WT.
Paper/Fiber	NA	40–70
Resins	NA	30–50

SECTION 4: FIRST AID MEASURES

Eye contact: If dust gets into the eyes, immediately rinse affected eye for at least 15 minutes with clean water. If irritation persists, seek medical attention.

Skin contact: If excess dust gets onto the skin, remove contaminated clothing and wash before reuse. Wash skin with soap and water. Seek medical attention if irritation occurs.

Ingestion: If dust gets into mouth, rinse mouth with clean water. Seek medical attention if necessary.

Inhalation: If excess dust is inhaled, move to fresh air. Seek medical attention if symptoms such as wheezing and/or shortness of breath occur.

FORMICA® LAMINATE BY FORMICA GROUP

MATERIAL SAFETY DATA SHEET CONTINUED



SECTION 5: FIRE FIGHTING MEASURES

This material is a Class A combustible material. Use water spray, carbon dioxide or dry chemical foam to extinguish flames. Use water to keep cool and prevent rekindling of material.

Unusual Fire or Explosion Hazards: Sanding, sawing, drilling, routing, cutting, etc. of this material may generate a Class ST-1 dust. Safety precautions and proper ventilation as recommended by NFPA-68 for Class ST-1 dusts should be followed to prevent this or any Class ST-1 dust from presenting a explosion hazard.

Suitable Extinguishing Media: CO₂, water, foam.

Possible Products of Combustion: Various oxides of carbon and nitrogen, ammonia and formaldehyde.

Protection of Firefighters: Combustion products may be irritating to eyes, skin and the respiratory tract. Firefighters should wear self-contained breathing apparatus and full fire-fighting turnout gear.

SECTION 6: ACCIDENTAL RELEASE MEASURES

Personal Precautions: Material is non-hazardous as supplied. Review personal protection measures in Section 8.

Methods for Clean-up: Recover undamaged materials for reuse or reclamation. Sweep or pick up scrap material and place in disposal containers.

SECTION 7: HANDLING AND STORAGE

Handling: Prevent dust from entering eyes. Do not breathe dust. Avoid prolong skin contact with dust and/or filings. Cut, drill, saw, sand, finish, etc. in well-ventilated areas.

Storage: Keep away from strong chemicals, solvents and excessive heat. Prolonged or extreme heat can cause damage to the surface.

SECTION 8: EXPOSURE CONTROLS/PERSONAL PROTECTION

EXPOSURE GUIDELINES

OSHA PEL	ACGIH TLV
15mg/m ³ Total Dust	10mg/m ³ Inhalable
5mg/m ³ Respirable Dust	3 mg/m ³ Respirable

Engineering Controls: Provide adequate ventilation to maintain exposure levels below applicable limits. The use of local exhaust ventilation is recommended during fabrication work. Dust generated is a Class ST-1 dust and precautions recommended by NFPA-68 should be followed.

Eye/Face Protection: Wear safety glasses when sawing, sanding, drilling or routing.

Skin Protection: Wear appropriate gloves when installing, transporting, sawing, cutting, drilling, routing or handling uninstalled pieces.

Foot Protection: No special protection required.

Respiratory Protection: Where airborne concentrations of dust are expected to exceed the allowable exposures, a NIOSH-approved respirator should be worn, chosen based on the form and concentration of the contaminant. Respirator usage must be in accordance with the OSHA Respiratory Protection Standard, 29 CFR 1910.134.

General Hygiene Considerations: Wash thoroughly after sawing, cutting, drilling, or routing. Have eyewash facilities immediately available.

Additional information is available in ASTM E1132-99a.

SECTION 9: PHYSICAL AND CHEMICAL PROPERTIES

COLOR	Various
ODOR	None
PHYSICAL STATE	Solid sheet product
PH	Not applicable
FREEZING POINT	Not applicable
BOILING POINT	Not applicable
FLASH POINT	Not applicable
EVAPORATION RATE	Not applicable
FLAMMABILITY	Not applicable
UPPER FLAMMABILITY LIMIT	Not applicable
LOWER FLAMMABILITY LIMIT	Not applicable
VAPOR PRESSURE	Not applicable
VAPOR DENSITY	Not applicable
SPECIFIC GRAVITY	1.45
SOLUBILITY (WATER)	Not applicable
AUTO-IGNITION TEMPERATURE	Not applicable
PERCENT VOLATILE, WT. %	Zero
VOLATILE ORGANIC COMPOUND (VOC) CONTENT, WT. %	Zero. Product as supplied is fully cured and chemically inert, VOC release is extremely low.

SECTION 10: STABILITY AND REACTIVITY

Stability: Stable

Conditions to Avoid: Avoid exposing to oxidizers, strong chemicals, alkaline solutions and solvents.

Incompatible Materials: Avoid strong acids and alkaline solutions which will damage the surface appearance of the material. If spills occur, remove immediately from the material.

Hazardous Decomposition Products: Thermal decomposition product may include various oxides of carbon and nitrogen may be released.

Hazardous Polymerization: Will not occur.

FORMICA® LAMINATE BY FORMICA GROUP

MATERIAL SAFETY DATA SHEET CONTINUED



SECTION 11: TOXICOLOGY INFORMATION

ACUTE EFFECTS

Oral LD50: Not known
Dermal LD50: Not known
Inhalation: See Section 2
Eye Irritation: See Section 2
Skin irritation: See Section 2
Sensitization: No data for product

CHRONIC EFFECTS

Carcinogenicity: This product may contain trace amounts of formaldehyde which is listed by IARC as carcinogenic. The ACGIH lists formaldehyde as a suspect human carcinogen. NTP lists formaldehyde as carcinogenic. **WARNING** Substance contained in this product known to the State of California to cause cancer, birth defects or other reproductive harm – formaldehyde.

Mutagenicity: No data for product
Reproductive Effects: No data for product
Developmental Effects: No data for product

SECTION 12: ECOLOGICAL INFORMATION

Ecotoxicity: No data for product
Persistence/Degradability: No data for product
Bioaccumulation/Accumulation: No data for product
Mobility in Environment: No data for product

SECTION 13: DISPOSAL CONSIDERATIONS

Disposal: Material is non-hazardous and no special treatment is required for disposal. Disposal in landfill must be in accordance with federal, state and local regulations.

SECTION 14: TRANSPORTATION INFORMATION

DOT: Not Regulated

SECTION 15: REGULATORY INFORMATION

WARNING SUBSTANCE CONTAINED IN THIS PRODUCT KNOWN TO THE STATE OF CALIFORNIA TO CAUSE CANCER, BIRTH DEFECTS OR OTHER REPRODUCTIVE HARM – FORMALDEHYDE.

SECTION 16: OTHER INFORMATION

NFPA Labeling

Health – 1 Fire – 0 Reactivity – 0

0 = minimal hazard, 1 = slight hazard, 2 = moderate hazard,
 3 = severe hazard, 4 = extreme hazard

ACRONYMS

ACGIH = American Conference of Governmental Industrial Hygienists
ASTM = American Society for Testing and Materials
DOT = Department of Transportation
IARC = International Agency for Research on Cancer
NFPA = National Fire Protection Agency
NIOSH = National Institute of Occupational Safety and Health
NTP = National Toxicology Program
OSHA = Occupational Safety and Health Administration
PEL = Permissible Exposure Limit
TLV = Threshold Limit Value
TSCA = Toxic Substance Control Act
TWA = Time Weighted Average
Mg/m³ = Milligrams per Cubic Meter of Air

Prepared by: Formica Corporation, John Foged, REM

The information contained in this document applies to this specific material as supplied. It may not be valid for this material if it is used in combination with any other materials. It is the user's responsibility to satisfy oneself as to the suitability and completeness of this information for his own particular use.

Formica is a sublicense trademark to Formica Corporation. Formica and the Formica Anvil logo are registered trademarks of The Diller Corporation. 1-800-FORMICA and ZIP-CHIP are trademarks of The Diller Corporation. The products and manufacturing processes of Formica Corporation are protected under U.S. and foreign patents.

All ® brands are registered trademarks of the respective owners.
 All ™ brands are trademarks of the respective owners.

For warranty information, please visit www.formica.com or call 1-800-FORMICA™.



GreenGuard Environmental Institute
 Formica® high-pressure laminate (HPL) is GreenGuard Indoor Air Quality Certified under the GreenGuard Standard for Low-Emitting Products.

©2009 Formica Corporation
 Cincinnati, Ohio 45241
 Printed in the USA
 (06/09, rev 01/10)



Decorative & Building Products

2011 Rocky River Road
Monroe, NC 28110
Tel: 704-289-6441

www.omnova.com

September 2, 2010

Valirea Shriver
Shriver Company

Attn: Valirea Shriver

The OMNOVA Solutions, Inc product that you have purchased is exempt from the Hazard Communication Standard.; however, while this relieves us of the responsibility of providing a Material Safety Data Sheet (MSDS) for this product, a review of the constituents has been conducted.

No constituent was found to be present in this product in levels in excess of those specified in the Standard. If you should have any questions or need further information please contact me at (704) 289-6441 x 2010.

Sincerely

Michael A. Stroup

Michael A. Stroup
Safety / Quality Manager

MATERIAL SAFETY DATA SHEET**SECTION I - PRODUCT IDENTIFICATION**

PRODUCT NAME: Particleboard
TRADE NAME: TemStock, Underlayment, Shelving
SYNONYMS: N/A
CHEMICAL FAMILY: N/A
CHEMICAL FORMULA: N/A
CAS NUMBER: None
MANUFACTURER'S NAME AND ADDRESS:
Temple-Inland Forest Products Corporation
P.O. Drawer N
Diboll, Texas 75941
Contact: Don Cox, Manager Chemical Control & Health Programs
EMERGENCY TELEPHONE NUMBER: 409-829-5511
DATE PREPARED OR REVISED: April 1997

SECTION II - HAZARDOUS INGREDIENTS

COMPONENT	CAS #	EXPOSURE LIMIT (OSHA)*	EXPOSURE LIMIT (ACGIH)*
Formaldehyde	50-00-0	0.75 ppm 8-hr TWA 2 ppm 15-min STEL	0.3 ppm Ceiling
Wood Dust	None	5 mg/m ³ 8-hr TWA 10 mg/m ³ 15-min STEL	5 mg/m ³ 8-hr TWA 10 mg/m ³ 15-min STEL

In AFL-CIO v. OSHA 965 F. 2d 962 (11th Cir. 1992), the court overturned OSHA's 1989 Air Contaminants Rule, including the specific PELs for wood dust that OSHA had established at that time. The 1989 PELs were: TWA-5.0 mg/m³; STEL (15 min.) - 10.0 mg/m³ (all soft and hard woods, except Western red cedar); Western red cedar: TWA - 2.5 mg/m³.

Wood dust is now officially regulated as an organic dust under the Particulates Not Otherwise Regulated (PNOR) or Inert or Nuisance Dust categories at PELs noted under Section II of this MSDS. However, a number of states have incorporated provisions of the 1989 standard in their state plans. Additionally, OSHA has announced that it may cite companies under the OSH Act General Duty Clause under appropriate circumstances for non-compliance with the 1989 PELs.

*NOTE: Although Agency and Court decision(s) could affect these values, the Company will continue to utilize these values as the PEL.

SECTION III - PHYSICAL PROPERTIES**DESCRIPTION**

Composite panel product composed of resin and wood particles of varying percents (dependent on properties and thickness) pressed into panels of various sizes (normally 4 ft. X 8 ft.) and third party certified for emission of formaldehyde at levels less than 0.3 ppm (large chamber method). The HUD Standard.

PHYSICAL DATA

BOILING POINT - Not Applicable
SPECIFIC GRAVITY - Variable (Dependent on wood species and moisture content)
VAPOR DENSITY - Not Applicable
% VOLATILES BY VOLUME - Not Applicable
MELTING POINT - Not Applicable
VAPOR PRESSURE - Not Applicable
SOLUBILITY IN H₂O (% BY WT.) - Insoluble
EVAPORATION RATE (Butyl Acetate = 1) - Not Applicable
pH - Not Applicable
APPEARANCE AND ODOR - Light to dark colored granular solid. Color and odor are dependent on the wood species and time since board was manufactured.

SECTION IV - FIRE AND EXPLOSION DATA

FLASH POINT - Not Applicable

AUTO IGNITION TEMPERATURE - 425 - 475 deg F

FLAMMABLE LIMITS - Formaldehyde LEL 7%, UEL 73%

FIRE EXTINGUISHING MEDIA - Water Spray, Carbon Dioxide

SPECIAL FIRE FIGHTING PROCEDURES - Fire fighting procedures for wood products are well known.

UNUSUAL FIRE AND EXPLOSION HAZARDS - Particleboard does not present a fire or explosion hazard. Sawing, sanding, or machining particleboard could result in the creation of wood dust. Wood dust may present a strong to severe explosion hazard if a dust cloud contacts an ignition source. According to data contained in NFPA Standards, .04 ounce per cubic foot is the minimum explosive concentration for wood flour.

SECTION V - HEALTH HAZARD DATA

Wood Dust/Fiber: May cause nasal dryness, irritation and obstruction. Coughing, wheezing, and sneezing sinusitis and prolonged colds have also been reported. Depending on species, may cause respiratory sensitization and/or irritation. IARC classifies wood dust as a carcinogen to humans (Group 1). This classification is based primarily on IARC's evaluation of increased risk in the occurrence of adenocarcinomas of the nasal cavities and paranasal sinuses associated with exposure to wood dust. IARC did not find sufficient evidence to associate cancers of the oropharynx, hypopharynx, lung, lymphatic and hematopoietic systems, stomach, colon or rectum with exposure to wood dust.

Signs and Symptoms of Exposure: Acute - may cause temporary irritation of skin, eyes, or respiratory system. If irritation persists consult a physician. Chronic - rats exposed to 14 ppm formaldehyde developed nasal cancer. The NCI epidemiology study of 26,000 workers found little, if any, evidence linking formaldehyde exposure to cancer. The EPA has classified formaldehyde a B-1 Probable Human Carcinogen. Formaldehyde is listed by the IARC and the NTP as an animal carcinogen.

EMERGENCY FIRST AID PROCEDURES

Inhalation, Eyes, Skin - Remove to fresh air

Ingestion - N/A

SECTION VI - REACTIVITY DATA

STABILITY - Stable

CONDITIONS TO AVOID - High relative humidity and high temperature increases the rate of formaldehyde emissions in particleboard.

INCOMPATIBILITY (materials to avoid) - Strong oxidizing agents, strong acids

HAZARDOUS DECOMPOSITION PRODUCTS - Thermal and/or thermal-oxidative decomposition can product irritating and potentially toxic fumes and gases, including CO, aldehydes and organic acids.

HAZARDOUS POLYMERIZATION - Will not occur

SECTION VII - SPECIAL PRECAUTION PROCEDURES

PRECAUTIONS AND SAFE HANDLING: Provide adequate ventilation to reduce the possible build-up of formaldehyde vapors.

STEPS TO BE TAKEN IF SPILLED OR RELEASED: See above.

WASTE DISPOSAL METHOD: Incinerate or landfill in accordance with local, state, and federal regulations.



PARTICLEBOARD MATERIAL SAFETY DATA SHEET

SECTION VIII - SPECIAL PROTECTION INFORMATION **RESPIRATORY PROTECTION**

Not required. However, the wearing of NIOSH approved breathing protection for exposure to wood dust may be necessary. Respirators are required if air contaminants exceed OSHA PEL.

VENTILATION

Local Exhaust: Necessary to remove dust in sanding, sawing and machine processes.

Mechanical: Ventilate to assure formaldehyde concentration is less than the OSHA PEL.

EYE PROTECTION

Wear appropriate eye protection or safety goggles if wood dust exposure is likely.

SECTION IX - REGULATORY INFORMATION

H.U.D.: The HUD regulation of 24 CFR Part 3280 provides for third party certification of particleboard manufactured with urea-formaldehyde resin for formaldehyde emissions. Maximum level is 0.3 ppm (large chamber test method). Temple-Inland particleboard, subject of this MSDS is certified to meet this H.U.D. standard.

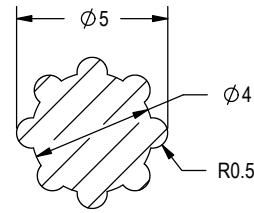
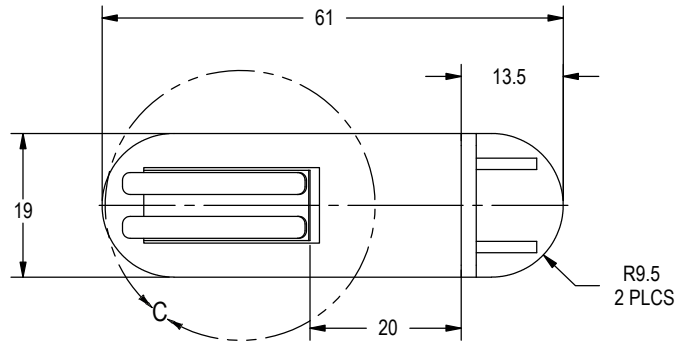
CALIFORNIA PROPOSITION 65 - Safe Drinking Water and Toxic Enforcement Act: Title 22 California Code of Regulations California Proposition 65 provides for labeling and disclosure of the presence of a chemical(s) known to the State of California to cause cancer or reproductive toxicity. This product contains Formaldehyde in extremely low levels and may, depending on conditions, emit Formaldehyde. Based on a preponderance of data and the recognition by OSHA that 0.75 ppm TWA is a safe employee exposure level, we do not feel that exposure to this product presents significant risk to users.

SARA 313 - This product does not contain chemical(s) in concentrations which should require reporting under SARA 313.

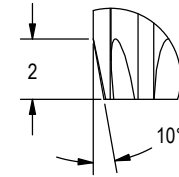
ODS: During the manufacture of this product there is no intended use of listed ozone depleting chemicals as defined in applicable EPA regulations.

IMPORTANT: Temple-Inland Forest Products Corporation believe the information contained in this MSDS to be accurate at the time of preparation and has been compiled using sources believed to be reliable. However, Temple-Inland Forest Products Corporation makes no warrant, either expressed or implied concerning the accuracy or completeness of the information presented. It is the responsibility of the user to comply with local, state, or federal regulations concerning use of this product. It is the further responsibility of the buyer to research and understand safe methods of use, storage, handling and disposal of this product.

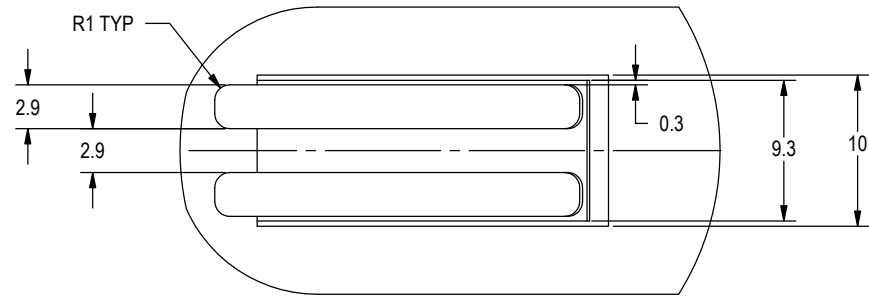
TemStock and Temple-Inland are trademarks of Temple-Inland Forest Products Corporation.



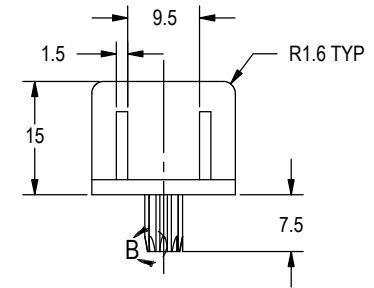
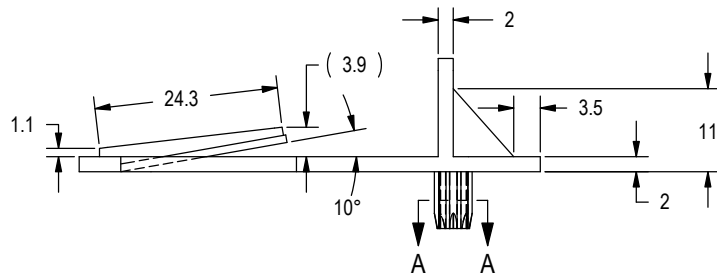
SECTION A-A
SCALE 4 : 1



DETAIL B
SCALE 4 : 1



DETAIL C
SCALE 2 : 1



SHT NO.
1 OF 1
REV:
A 04/07/03

DRAWN BY:
D. JOHNSON
SCALE:
1 : 1
DATE:
08/29/03

TOLERANCES

UNLESS OTHERWISE SPECIFIED
DIMENSIONS AND TOLERANCING
ARE IN MILLIMETERS (INCHES)

.X ±.1
.XX ±.03
.XXX ±.005

HARDWARE RESOURCES

4319 MARLENA ST, BOSSIER CITY, LA 71111

PART NAME:
PEG LOCK SHELF CLIP (3/4")

MATERIAL:
CLEAR PLASTIC

ITEM NO:
7705CL

PLATING: