

DATE	ISSUE
22 SEPT 2009	CONCEPT
5 OCT 2009	PERMIT
2 NOV 2009	CHANGE
9 NOV 2009	PERMIT
8 JAN 2010	REV PERMIT

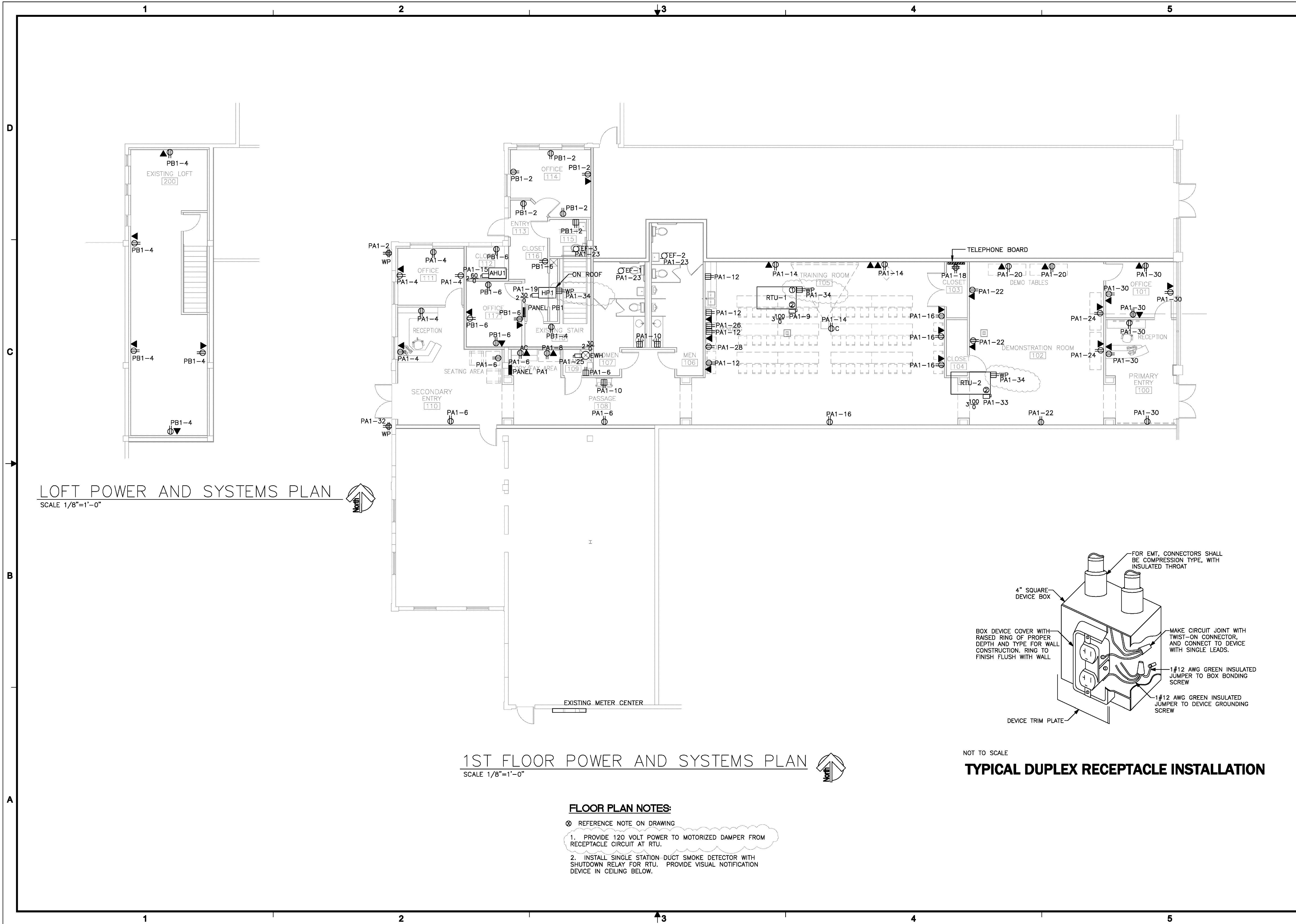
TENANT IMPROVEMENTS FOR
CRC INSTITUTE GREEN TRAINING CENTER
PEARL PLAZA SHOPPING CENTER, SUITE 03
1500 NORTH PEARL PLAZA
JACKSONVILLE, FLORIDA 32208

ELECTRICAL POWER AND SYSTEMS PLAN

PROJECT NO:	09088
DRAWN BY:	JBS
CHECKED BY:	JBS
SHEET NO:	

E2.2

SHEET



LOFT POWER AND SYSTEMS PLAN
SCALE 1/8"=1'-0"

1ST FLOOR POWER AND SYSTEMS PLAN
SCALE 1/8"=1'-0"

NOT TO SCALE
TYPICAL DUPLEX RECEPTACLE INSTALLATION

- FLOOR PLAN NOTES:**
- ⊗ REFERENCE NOTE ON DRAWING
 - 1. PROVIDE 120 VOLT POWER TO MOTORIZED DAMPER FROM RECEPTACLE CIRCUIT AT RTU.
 - 2. INSTALL SINGLE STATION DUCT SMOKE DETECTOR WITH SHUTDOWN RELAY FOR RTU. PROVIDE VISUAL NOTIFICATION DEVICE IN CEILING BELOW.