

# TOILET ACCESSORIES LEGEND

NO.	DESCRIPTION	NO.	DESCRIPTION	NO.	DESCRIPTION	NO.	DESCRIPTION	NO.	DESCRIPTION	NO.	DESCRIPTION	NO.	DESCRIPTION
1	LAVATORY	36	GRAB BARS	2	TOWEL DISPENSER / WASTE RECEPTACLE	3	SOAP DISPENSER	3	TOILET SEAT COVER DISPENSER	4	TOILET PAPER HOLDER	7	FIXED TILT MIRROR
2	FLOOR MOUNTED TOILET	42	GRAB BARS	1	PAPER TOWEL DISPENSER	4	TOILET SEAT COVER DISPENSER	5	TOILET PAPER HOLDER	9	ELECTRIC WATER COOLER	10	FIXED TILT MIRROR
3	GRAB BARS	1	PAPER TOWEL DISPENSER	2	TOWEL DISPENSER / WASTE RECEPTACLE	3	SOAP DISPENSER	4	TOILET SEAT COVER DISPENSER	5	TOILET PAPER HOLDER	7	FIXED TILT MIRROR
4	GRAB BARS	2	TOWEL DISPENSER / WASTE RECEPTACLE	3	SOAP DISPENSER	4	TOILET SEAT COVER DISPENSER	5	TOILET PAPER HOLDER	7	FIXED TILT MIRROR	9	ELECTRIC WATER COOLER
5	TOILET PAPER DISPENSER	3	SOAP DISPENSER	4	TOILET SEAT COVER DISPENSER	5	TOILET PAPER HOLDER	7	FIXED TILT MIRROR	9	ELECTRIC WATER COOLER	10	FIXED TILT MIRROR
6	NOT USED	4	TOILET SEAT COVER DISPENSER	5	TOILET PAPER HOLDER	7	FIXED TILT MIRROR	9	ELECTRIC WATER COOLER	10	FIXED TILT MIRROR		
7	FIXED TILT MIRROR, 18"x30"	5	TOILET PAPER HOLDER	7	FIXED TILT MIRROR	9	ELECTRIC WATER COOLER	10	FIXED TILT MIRROR				
8	NOT USED	7	FIXED TILT MIRROR, 18"x30"	9	ELECTRIC WATER COOLER	10	FIXED TILT MIRROR						
9	ELECTRIC WATER COOLER	9	ELECTRIC WATER COOLER										
10	BABY CHANGING TABLE												

# TOILET ACCESSORIES SCHEDULE

NO.	ITEM	MOUNTING	BRADLEY NO.
1	PAPER TOWEL DISPENSER	SURFACE MOUNTED	2441-11
2	TOWEL DISPENSER / WASTE RECEPTACLE	SURFACE MOUNTED	2017-11
3	SOAP DISPENSER	SURFACE MOUNTED	6562
4	TOILET SEAT COVER DISPENSER	SURFACE MOUNTED	5831
5	TOILET PAPER DISPENSER	SURFACE MOUNTED	5224
6	NOT USED	-	-
7	FIXED TILT MIRROR, 18"x30"	SURFACE MOUNTED	740-1830
8	NOT USED	-	-
9	ELECTRIC WATER COOLER	SURFACE	-
10	BABY CHANGING TABLE	SURFACE MOUNTED	961
36	36" GRAB BAR	SURFACE, CONCEALED 250# LOAD	832 + MOUNTING KIT
42	42" GRAB BAR	SURFACE, CONCEALED 250# LOAD	832 + MOUNTING KIT

NOTE: WALLS WITHIN 2 FEET OF URINALS AND WATER CLOSETS SHALL HAVE A SMOOTH HARD, NONABSORBENT SURFACE TO A HEIGHT OF 4 FEET ABOVE FLOOR, AND EXCEPT FOR STRUCTURAL ELEMENTS, THE MATERIALS USED IN SUCH WALLS SHALL BE OF A TYPE THAT IS NOT ADVERSELY AFFECTED BY MOISTURE. (FBC-B 1210.2)

**SCOPO**  
design group, llc  
Architecture • Planning • Interiors  
1930 San Marco Blvd., Suite 203  
Jacksonville, Florida 32207  
T 904 253 3902 F 904 253 3906  
www.scopodesigngroup.com  
AA26001292

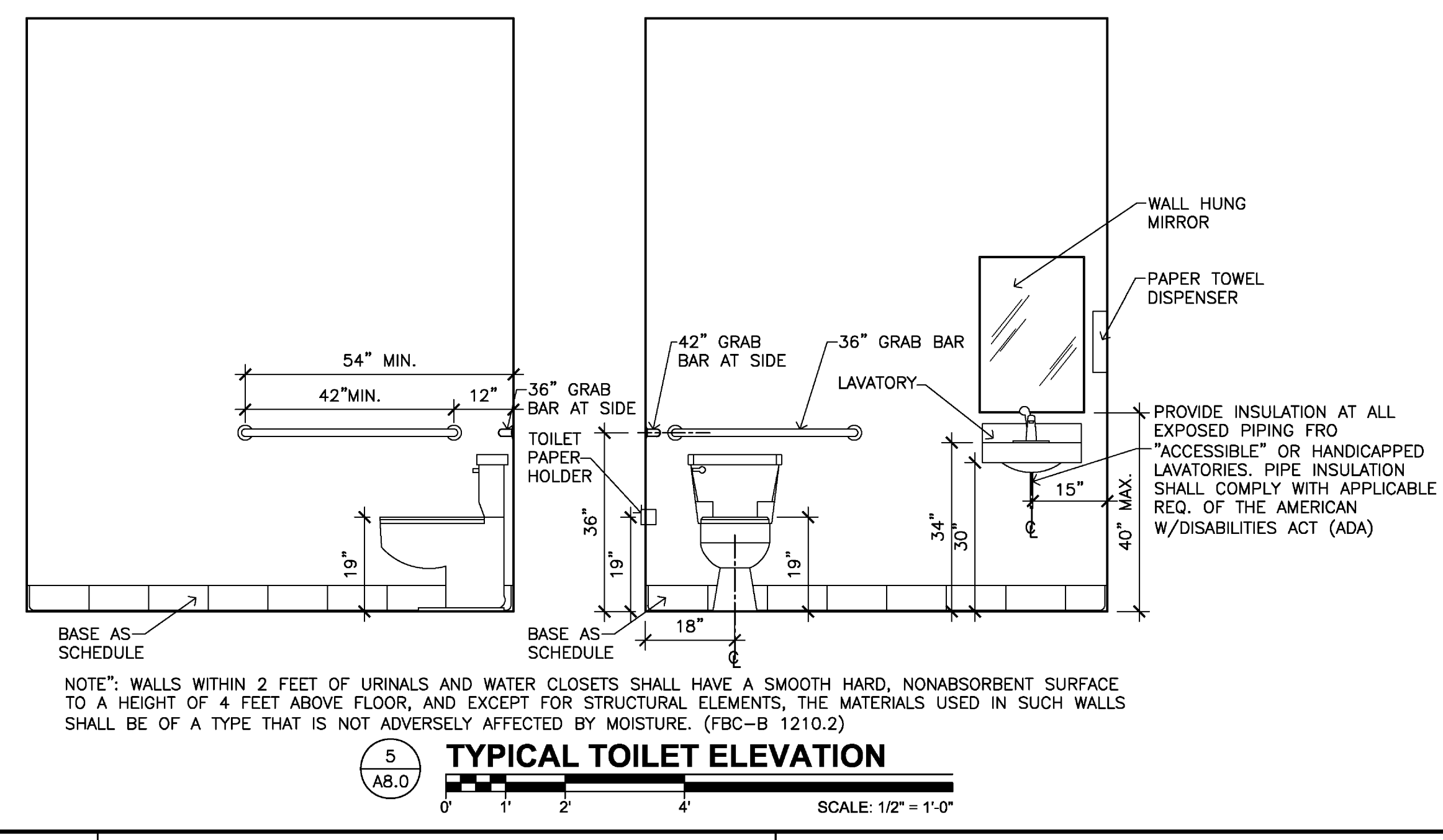
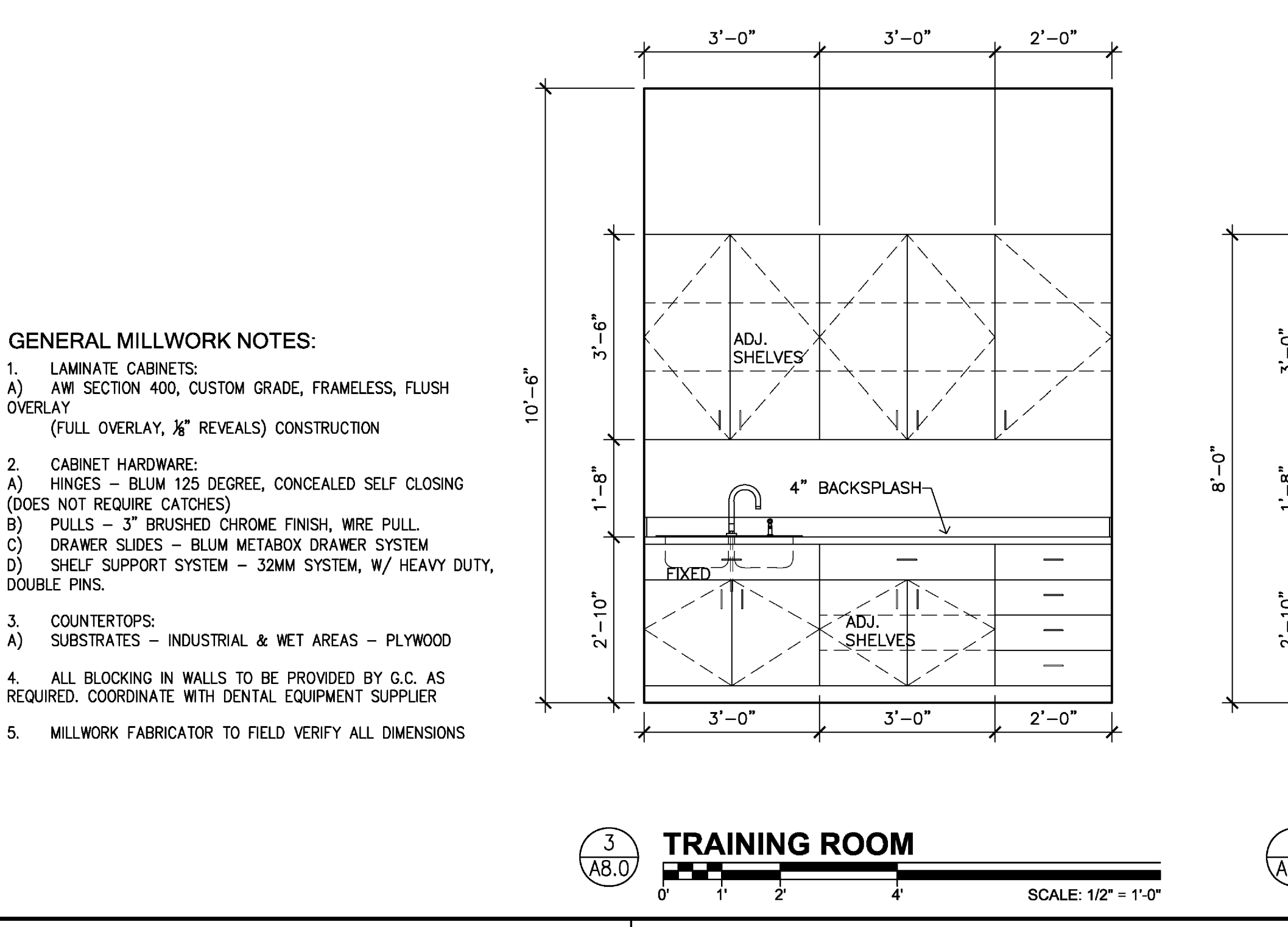
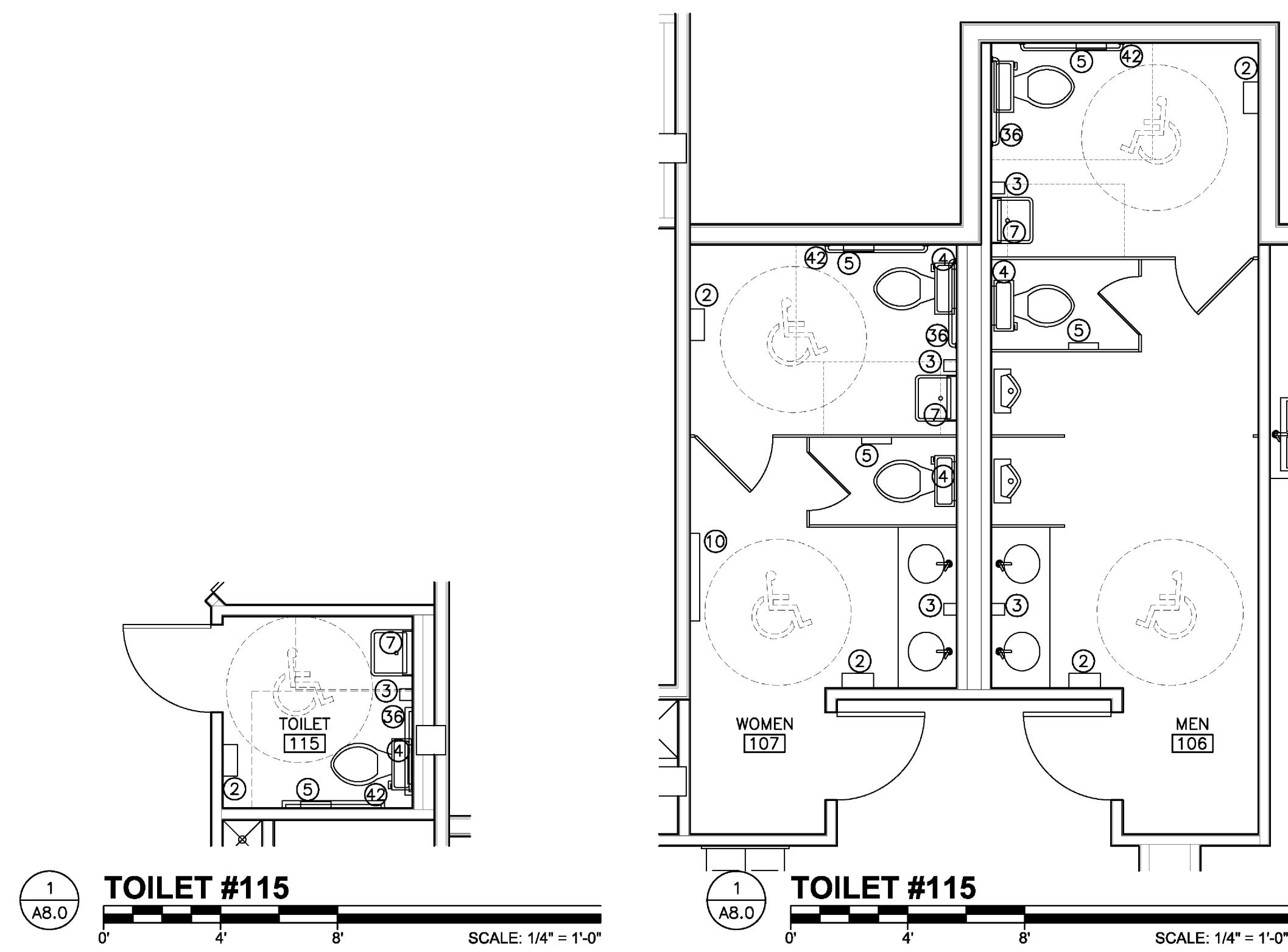
**PROJECT ARCHITECT**  
RYAN T. DOWNS, AIA  
FLORIDA LICENSE NO. AR92651

**PROJECT TEAM**  
LANDLORD  
PEARL PLAZA PARTNERS, LLC  
TENANT  
COMMUNITY REHABILITATION RESOURCES  
ARCHITECT  
SCOPO DESIGN GROUP, LLC  
904-253-3902  
STRUCTURAL ENGINEER  
LATITUDE 30 ENGINEERING  
904-247-1855  
MECHANICAL ENGINEER  
GREGORY ENGINEERING, INC.  
904-714-5118  
ELECTRICAL ENGINEER  
SHAFFER ENGINEERING GROUP, LLC  
904-239-3621

DATE	ISSUE
22 SEPT 2009	CONCEPT
06 OCT 2009	REVIEW
02 NOV 2009	CHANGE
09 NOV 2009	PERMIT
08 JAN 2010	REV PERMIT

IMPROVEMENTS FOR  
**CRG INSTITUTE**  
**GREEN TRAINING CENTER**  
PEARL PLAZA SHOPPING CENTER, SUITE 08  
5308 NORTH PEARL STREET  
JACKSONVILLE, FLORIDA 32208  
TOILET ACCESSORIES PLAN / INTERIOR ELEVATIONS

PROJECT NO: 09088  
DRAWN BY: JMM  
CHECKED BY: RTD  
SHEET NO:  
**A8.0**  
SHEET



- GENERAL MILLWORK NOTES:**
- LAMINATE CABINETS:  
A) AWI SECTION 400, CUSTOM GRADE, FRAMELESS, FLUSH OVERLAY  
(FULL OVERLAY, 1/8" REVEALS) CONSTRUCTION
  - CABINET HARDWARE:  
A) HINGES - BLUM 125 DEGREE, CONCEALED SELF CLOSING (DOES NOT REQUIRE CATCHES)  
B) PULLS - 3" BRUSHED CHROME FINISH, WIRE PULL  
C) DRAWER SLIDES - BLUM METABOX DRAWER SYSTEM  
D) SHELF SUPPORT SYSTEM - 32MM SYSTEM, W/ HEAVY DUTY, DOUBLE PINS.
  - COUNTERTOPS:  
A) SUBSTRATES - INDUSTRIAL & WET AREAS - PLYWOOD
  - ALL BLOCKING IN WALLS TO BE PROVIDED BY G.C. AS REQUIRED. COORDINATE WITH DENTAL EQUIPMENT SUPPLIER
  - MILLWORK FABRICATOR TO FIELD VERIFY ALL DIMENSIONS

NOTE: WALLS WITHIN 2 FEET OF URINALS AND WATER CLOSETS SHALL HAVE A SMOOTH HARD, NONABSORBENT SURFACE TO A HEIGHT OF 4 FEET ABOVE FLOOR, AND EXCEPT FOR STRUCTURAL ELEMENTS, THE MATERIALS USED IN SUCH WALLS SHALL BE OF A TYPE THAT IS NOT ADVERSELY AFFECTED BY MOISTURE. (FBC-B 1210.2)

Scopo Design Group, LLC. hereby expressly reserves the rights to this drawing and it is not to be reproduced or copied in any format or manner whatsoever without first obtaining permission and consent.