

PROJECT TEAM

LANDLORD
PEARL PLAZA PARTNERS, LLC
TENANT
COMMUNITY REHABILITATION
RESOURCES
ARCHITECT
SCOPO DESIGN GROUP, LLC
904-253-3902
STRUCTURAL ENGINEER
LATITUDE 30 ENGINEERING
904-247-1855
MECHANICAL ENGINEER
GREGORY ENGINEERING, INC.
904-714-5118
ELECTRICAL ENGINEER
SHAFFER ENGINEERING
GROUP, LLC
904-239-3621

DATE	ISSUE
22 SEPT 2009	CONCEPT
06 OCT 2009	REVIEW
02 NOV 2009	CHANGE
09 NOV 2009	PERMIT
08 JAN 2010	REV PERMIT

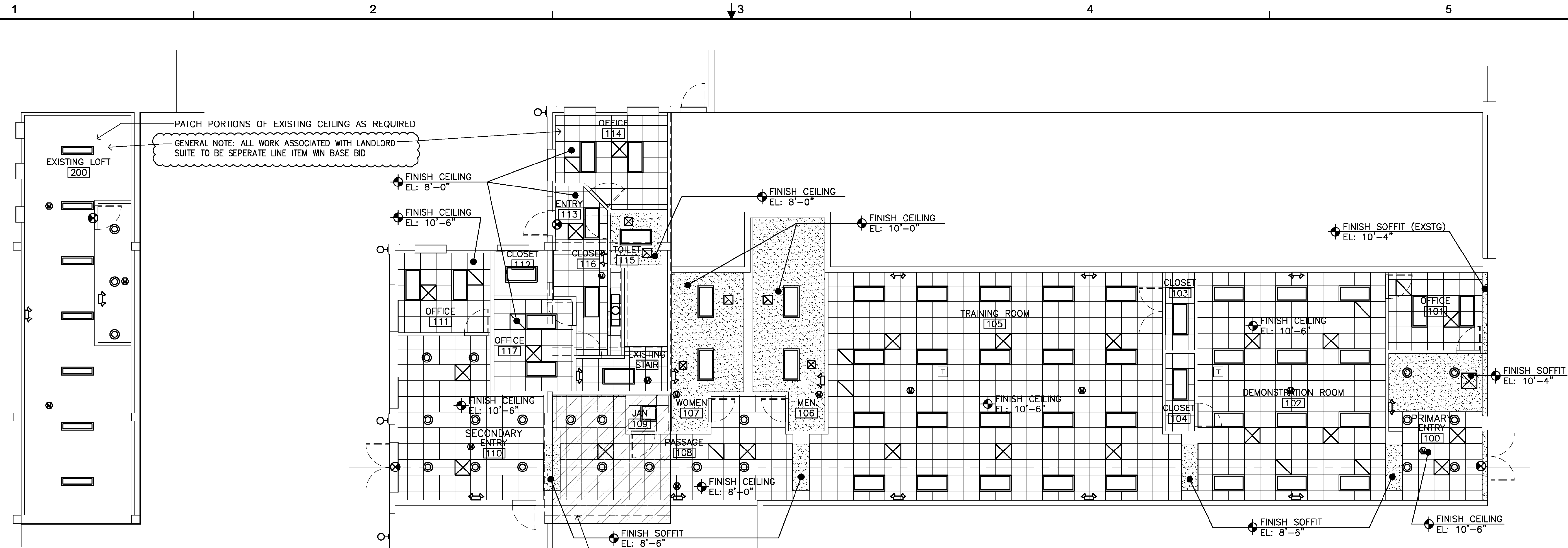
TENANT IMPROVEMENTS
FOR
CRC INSTITUTE
GREEN TRAINING CENTER
PEARL PLAZA SHOPPING CENTER, SUITE 08
5308 NORTH PEARL STREET
JACKSONVILLE, FLORIDA 32208

REFLECTED CEILING PLAN /
NOTES

PROJECT NO: 09088
DRAWN BY: JMM
CHECKED BY: RTD
SHEET NO:

A1.5

SHEET



MEZZANINE REFLECTED CEILING PLAN
SCALE: 1/8" = 1'-0"
NORTH

REFLECTED CEILING PLAN
SCALE: 1/8" = 1'-0"
NORTH

- CEILING LEGEND**
- ACOUSTICAL CEILING TILE
 - GYPSUM BOARD CEILING
- ELECTRICAL SYSTEMS LEGEND**
- LIGHTING FIXTURE, 2'x4' FLUORESCENT LAY-IN
 - LIGHTING FIXTURE, EMERGENCY
 - WALL MOUNTED LIGHT FIXTURE
 - SURFACE MOUNTED LIGHT FIXTURE
 - RECESSED LIGHT FIXTURE
 - EXIT LIGHT, SHADED AREA INDICATES FACE
 - EMERGENCY LIGHTING BATTERY UNIT (WITH 2 HEADS)
 - MOTION SENSOR
- MECHANICAL LEGEND**
- CEILING SUPPLY DIFFUSER
 - CEILING RETURN GRILLE
 - CEILING EXHAUST FAN

REFLECTED CEILING PLAN NOTES

- THE GENERAL AND ELECTRICAL CONTRACTORS SHALL CHECK ALL CEILING HEIGHTS AND CEILING PLENUM CONDITIONS FOR CLEARANCE OF DUCT WORK, LIGHTING, AND OTHER OBSTRUCTIONS TO INSURE THE FINISHED CEILING HEIGHT SHOWN ON ARCHITECTS DRAWINGS. ANY DISCREPANCY SHALL BE BROUGHT TO THE ARCHITECTS ATTENTION PRIOR TO COMMENCEMENT OF WORK.
- MECHANICAL AND ELECTRICAL DESIGN TO BE PERFORMED BY A LICENSED ELEC AND HVAC CONTRACTOR.
- ALIGN ALL THERMOSTATS VERTICALLY ABOVE LIGHT SWITCHES. COORDINATE WITH MECH CONTRACTOR. IF THERMOSTAT OCCURS WHERE NO LIGHT SWITCHES OCCUR, COORDINATE LOCATION WITH ARCHITECT.

PATCH PORTIONS OF EXISTING CEILING AS REQUIRED
GENERAL NOTE: ALL WORK ASSOCIATED WITH LANDLORD SUITE TO BE SEPERATE LINE ITEM WIN BASE BID

SHADED AREA INDICATES UNDERSIDE OF EXISTING LOFT TO RECEIVE 2 HOUR FIRE RATED GB CEILING