

PROJECT TEAM

LANDLORD
PEARL PLAZA PARTNERS, LLC
TENANT
COMMUNITY REHABILITATION
RESOURCES
ARCHITECT
SCOPO DESIGN GROUP, LLC
904-253-3902
STRUCTURAL ENGINEER
LATITUDE 30 ENGINEERING
904-247-1855
MECHANICAL ENGINEER
GREGORY ENGINEERING, INC.
904-714-5118
ELECTRICAL ENGINEER
SHAFFER ENGINEERING
GROUP, LLC
904-239-3621

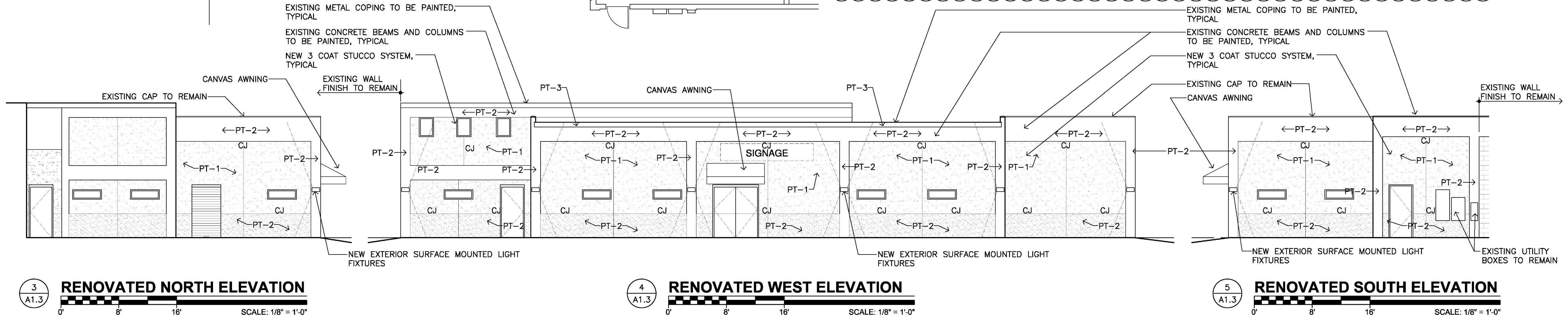
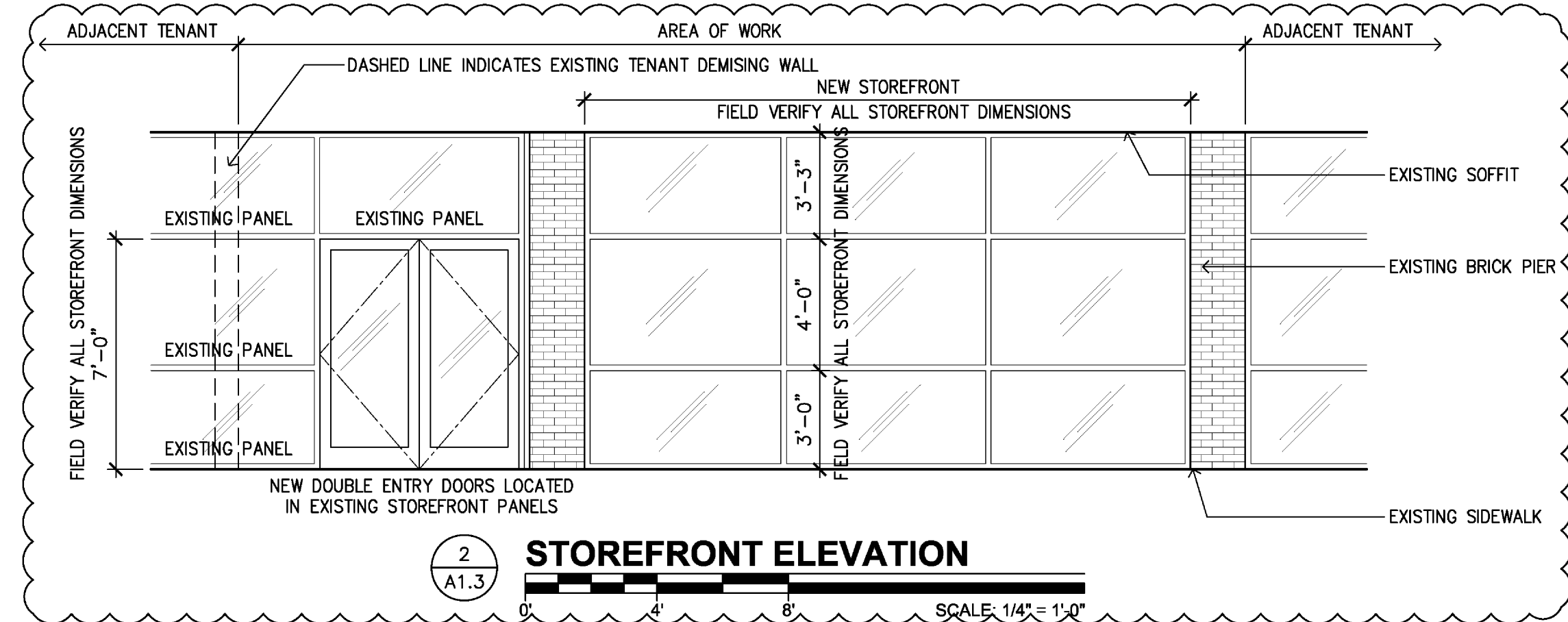
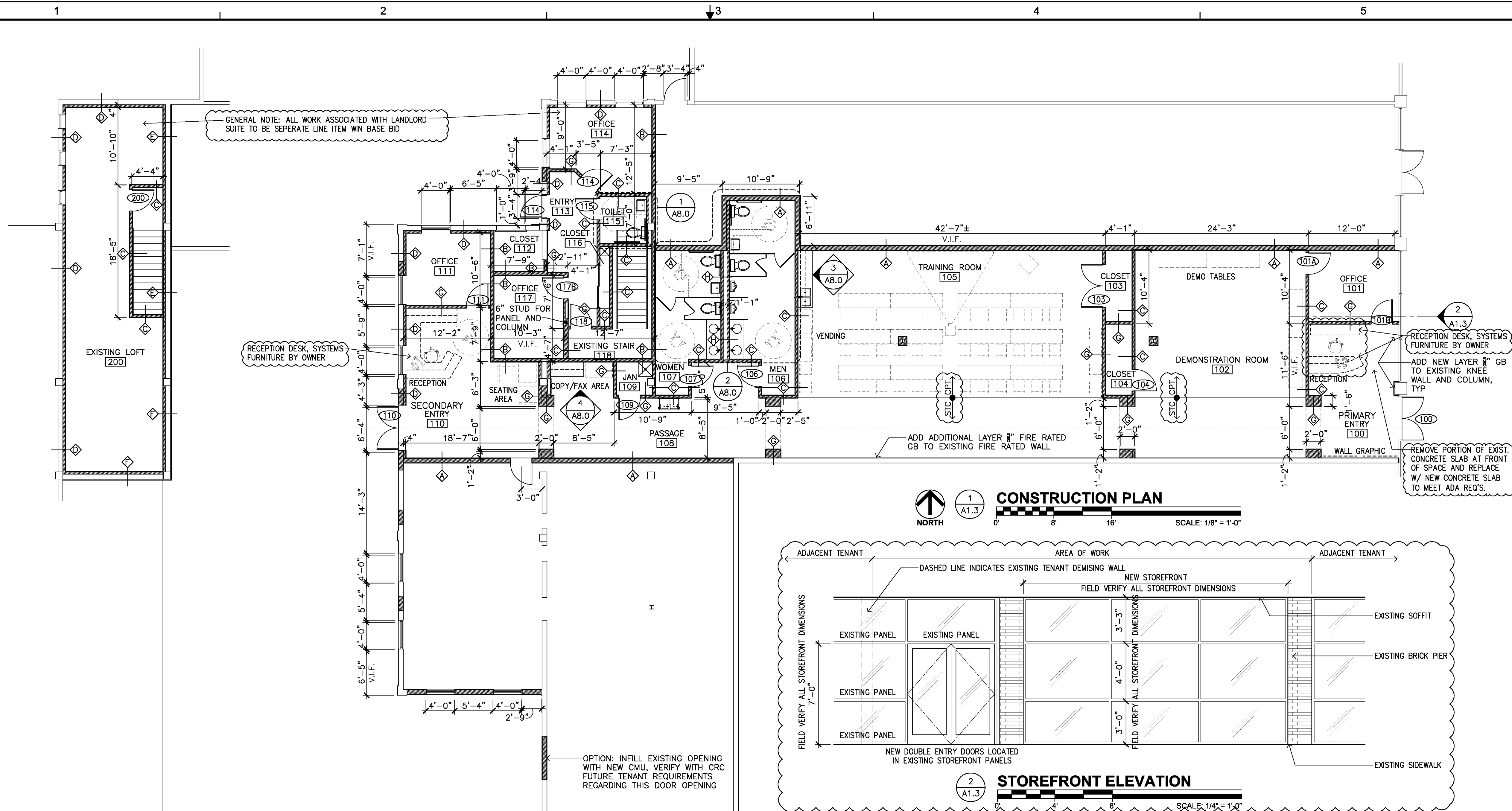
DATE	ISSUE
22 SEPT 2009	CONCEPT
06 OCT 2009	REVIEW
02 NOV 2009	CHANGE
09 NOV 2009	PERMIT
08 JAN 2010	REV PERMIT

TENANT IMPROVEMENTS FOR
CRG INSTITUTE CENTER
PEARL PLAZA SHOPPING CENTER, SUITE 018
5308 NORTH PEARL STREET
JACKSONVILLE, FLORIDA 32208
CONSTRUCTION PLAN /
EXTERIOR ELEVATIONS /

PROJECT NO: 09088
DRAWN BY: JMM
CHECKED BY: RTD
SHEET NO:

A1.3

SHEET



NOTE: SEE STRUCTURAL DRAWINGS FOR NEW HEADERS AND STRUCTURAL REQUIREMENTS
SEE MEP DRAWINGS FOR ADDITIONAL INFORMATION. OWNER TO PROVIDE EXTERIOR
COLORS FOR PT-1, PT-2, AND PT-3

Scopo Design Group, LLC, hereby expressly reserves the rights to this drawing and it is not to be reproduced or copied in any format or manner whatsoever without first obtaining permission and consent.