

**PROJECT TEAM**

**LANDLORD**  
PEARL PLAZA PARTNERS, LLC  
**TENANT**  
COMMUNITY REHABILITATION RESOURCES  
**ARCHITECT**  
SCOPO DESIGN GROUP, LLC  
904-253-3902  
**STRUCTURAL ENGINEER**  
LATITUDE 30 ENGINEERING  
904-247-1855  
**MECHANICAL ENGINEER**  
GREGORY ENGINEERING, INC.  
904-714-5118  
**ELECTRICAL ENGINEER**  
SHAFFER ENGINEERING GROUP, LLC  
904-239-3621

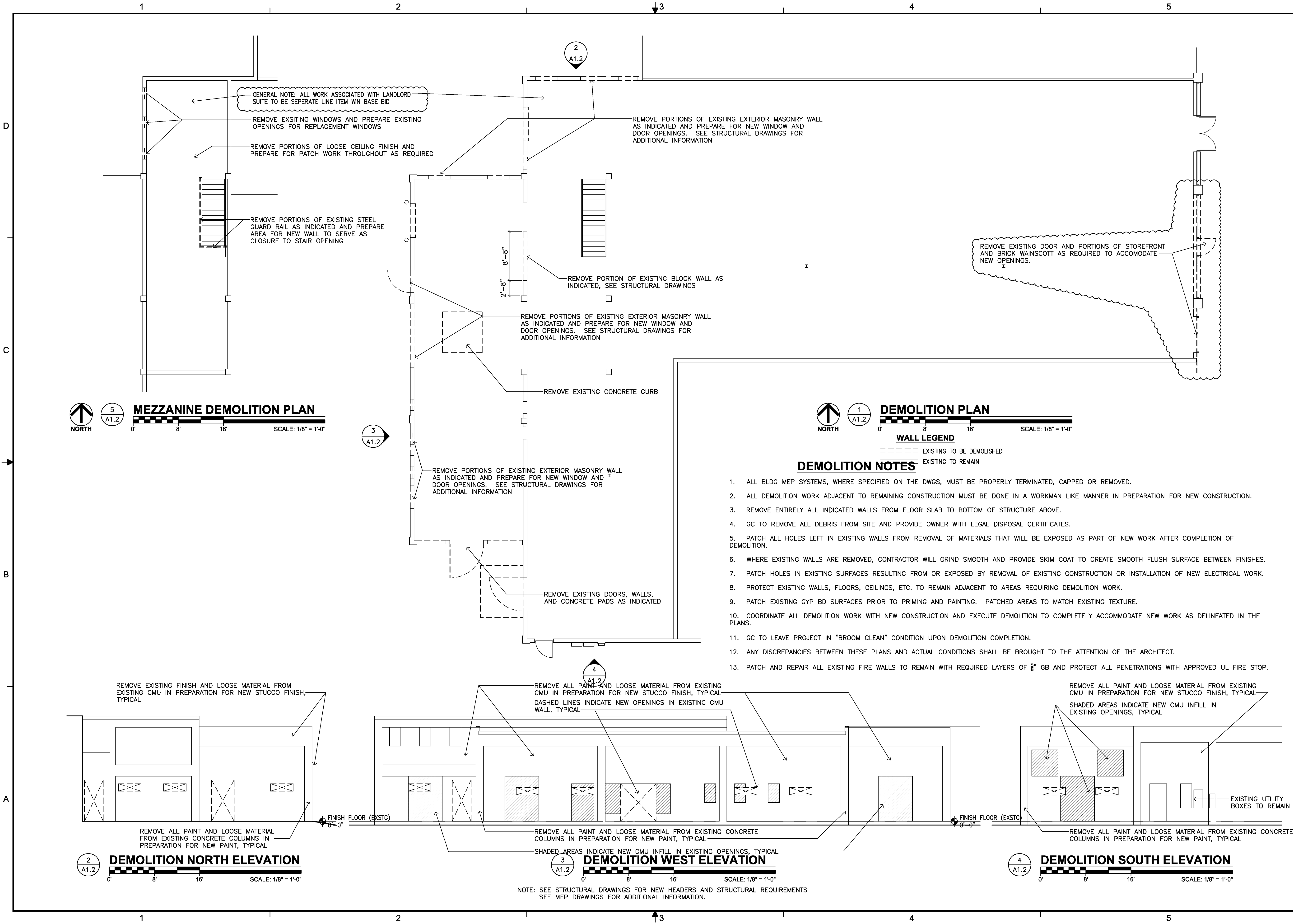
DATE	ISSUE
22 SEPT 2009	CONCEPT
06 OCT 2009	REVIEW
02 NOV 2009	CHANGE
09 NOV 2009	PERMIT
08 JAN 2010	REV PERMIT

IMPROVEMENTS FOR  
**CRC INSTITUTE**  
**GREEN TRAINING CENTER**  
PEARL PLAZA SHOPPING CENTER SUITE 08  
5308 NORTH PEARL STREET  
JACKSONVILLE, FLORIDA 32208

DEMOLITION PLAN  
DEMOLITION ELEVATIONS  
DEMOLITION NOTES

PROJECT NO: 09088  
DRAWN BY: JMM  
CHECKED BY: RTD  
SHEET NO:

**A1.2**  
SHEET



GENERAL NOTE: ALL WORK ASSOCIATED WITH LANDLORD SUITE TO BE SEPERATE LINE ITEM WIN BASE BID

REMOVE EXISTING WINDOWS AND PREPARE EXISTING OPENINGS FOR REPLACEMENT WINDOWS

REMOVE PORTIONS OF LOOSE CEILING FINISH AND PREPARE FOR PATCH WORK THROUGHOUT AS REQUIRED

REMOVE PORTIONS OF EXISTING STEEL GUARD RAIL AS INDICATED AND PREPARE AREA FOR NEW WALL TO SERVE AS CLOSURE TO STAIR OPENING

REMOVE PORTIONS OF EXISTING EXTERIOR MASONRY WALL AS INDICATED AND PREPARE FOR NEW WINDOW AND DOOR OPENINGS. SEE STRUCTURAL DRAWINGS FOR ADDITIONAL INFORMATION

REMOVE PORTION OF EXISTING BLOCK WALL AS INDICATED, SEE STRUCTURAL DRAWINGS

REMOVE PORTIONS OF EXISTING EXTERIOR MASONRY WALL AS INDICATED AND PREPARE FOR NEW WINDOW AND DOOR OPENINGS. SEE STRUCTURAL DRAWINGS FOR ADDITIONAL INFORMATION

REMOVE EXISTING CONCRETE CURB

REMOVE PORTIONS OF EXISTING EXTERIOR MASONRY WALL AS INDICATED AND PREPARE FOR NEW WINDOW AND DOOR OPENINGS. SEE STRUCTURAL DRAWINGS FOR ADDITIONAL INFORMATION

REMOVE EXISTING DOORS, WALLS, AND CONCRETE PADS AS INDICATED

REMOVE EXISTING FINISH AND LOOSE MATERIAL FROM EXISTING CMU IN PREPARATION FOR NEW STUCCO FINISH, TYPICAL

REMOVE ALL PAINT AND LOOSE MATERIAL FROM EXISTING CMU IN PREPARATION FOR NEW STUCCO FINISH, TYPICAL. DASHED LINES INDICATE NEW OPENINGS IN EXISTING CMU WALL, TYPICAL

REMOVE ALL PAINT AND LOOSE MATERIAL FROM EXISTING CMU IN PREPARATION FOR NEW STUCCO FINISH, TYPICAL. SHADED AREAS INDICATE NEW CMU INFILL IN EXISTING OPENINGS, TYPICAL

REMOVE ALL PAINT AND LOOSE MATERIAL FROM EXISTING CONCRETE COLUMNS IN PREPARATION FOR NEW PAINT, TYPICAL

REMOVE ALL PAINT AND LOOSE MATERIAL FROM EXISTING CONCRETE COLUMNS IN PREPARATION FOR NEW PAINT, TYPICAL

REMOVE ALL PAINT AND LOOSE MATERIAL FROM EXISTING CONCRETE COLUMNS IN PREPARATION FOR NEW PAINT, TYPICAL

SHADED AREAS INDICATE NEW CMU INFILL IN EXISTING OPENINGS, TYPICAL

- DEMOLITION NOTES**
- ALL BLDG MEP SYSTEMS, WHERE SPECIFIED ON THE DWGS, MUST BE PROPERLY TERMINATED, CAPPED OR REMOVED.
  - ALL DEMOLITION WORK ADJACENT TO REMAINING CONSTRUCTION MUST BE DONE IN A WORKMAN LIKE MANNER IN PREPARATION FOR NEW CONSTRUCTION.
  - REMOVE ENTIRELY ALL INDICATED WALLS FROM FLOOR SLAB TO BOTTOM OF STRUCTURE ABOVE.
  - GC TO REMOVE ALL DEBRIS FROM SITE AND PROVIDE OWNER WITH LEGAL DISPOSAL CERTIFICATES.
  - PATCH ALL HOLES LEFT IN EXISTING WALLS FROM REMOVAL OF MATERIALS THAT WILL BE EXPOSED AS PART OF NEW WORK AFTER COMPLETION OF DEMOLITION.
  - WHERE EXISTING WALLS ARE REMOVED, CONTRACTOR WILL GRIND SMOOTH AND PROVIDE SKIM COAT TO CREATE SMOOTH FLUSH SURFACE BETWEEN FINISHES.
  - PATCH HOLES IN EXISTING SURFACES RESULTING FROM OR EXPOSED BY REMOVAL OF EXISTING CONSTRUCTION OR INSTALLATION OF NEW ELECTRICAL WORK.
  - PROTECT EXISTING WALLS, FLOORS, CEILINGS, ETC. TO REMAIN ADJACENT TO AREAS REQUIRING DEMOLITION WORK.
  - PATCH EXISTING GYP BD SURFACES PRIOR TO PRIMING AND PAINTING. PATCHED AREAS TO MATCH EXISTING TEXTURE.
  - COORDINATE ALL DEMOLITION WORK WITH NEW CONSTRUCTION AND EXECUTE DEMOLITION TO COMPLETELY ACCOMMODATE NEW WORK AS DELINEATED IN THE PLANS.
  - GC TO LEAVE PROJECT IN "BROOM CLEAN" CONDITION UPON DEMOLITION COMPLETION.
  - ANY DISCREPANCIES BETWEEN THESE PLANS AND ACTUAL CONDITIONS SHALL BE BROUGHT TO THE ATTENTION OF THE ARCHITECT.
  - PATCH AND REPAIR ALL EXISTING FIRE WALLS TO REMAIN WITH REQUIRED LAYERS OF 3/8" GB AND PROTECT ALL PENETRATIONS WITH APPROVED UL FIRE STOP.

**WALL LEGEND**

--- EXISTING TO BE DEMOLISHED  
--- EXISTING TO REMAIN

NOTE: SEE STRUCTURAL DRAWINGS FOR NEW HEADERS AND STRUCTURAL REQUIREMENTS  
SEE MEP DRAWINGS FOR ADDITIONAL INFORMATION.

Scopo Design Group, LLC. hereby expressly reserves the rights to this drawing and it is not to be reproduced or copied in any format or manner whatsoever without first obtaining permission and consent.