

# Tenant Improvements for CRC Institute Green Training Center

5308 North Pearl Street ~ Jacksonville, Florida 32208



**PROJECT ARCHITECT**  
RYAN T. DOWNS, AIA  
  
FLORIDA LICENSE NO. AR92651

**PROJECT TEAM**  
**LANDLORD**  
PEARL PLAZA PARTNERS, LLC  
**TENANT**  
COMMUNITY REHABILITATION  
RESOURCES  
**ARCHITECT**  
SCOPO DESIGN GROUP, LLC  
904-253-3902  
**STRUCTURAL ENGINEER**  
LATITUDE 30 ENGINEERING  
904-247-1855  
**MECHANICAL ENGINEER**  
GREGORY ENGINEERING, INC.  
904-714-5118  
**ELECTRICAL ENGINEER**  
SHAFFER ENGINEERING  
GROUP, LLC  
904-239-3621

DATE	ISSUE
22 SEPT 2009	CONCEPT
06 OCT 2009	REVIEW
02 NOV 2009	CHANGE
09 NOV 2009	PERMIT

TENANT IMPROVEMENTS  
FOR  
**CRC INSTITUTE  
GREEN TRAINING CENTER**  
PEARL PLAZA PARTNERS, LLC  
5308 NORTH PEARL STREET  
JACKSONVILLE, FLORIDA 32208  
  
SHEET INDEX  
PROJECT INFORMATION

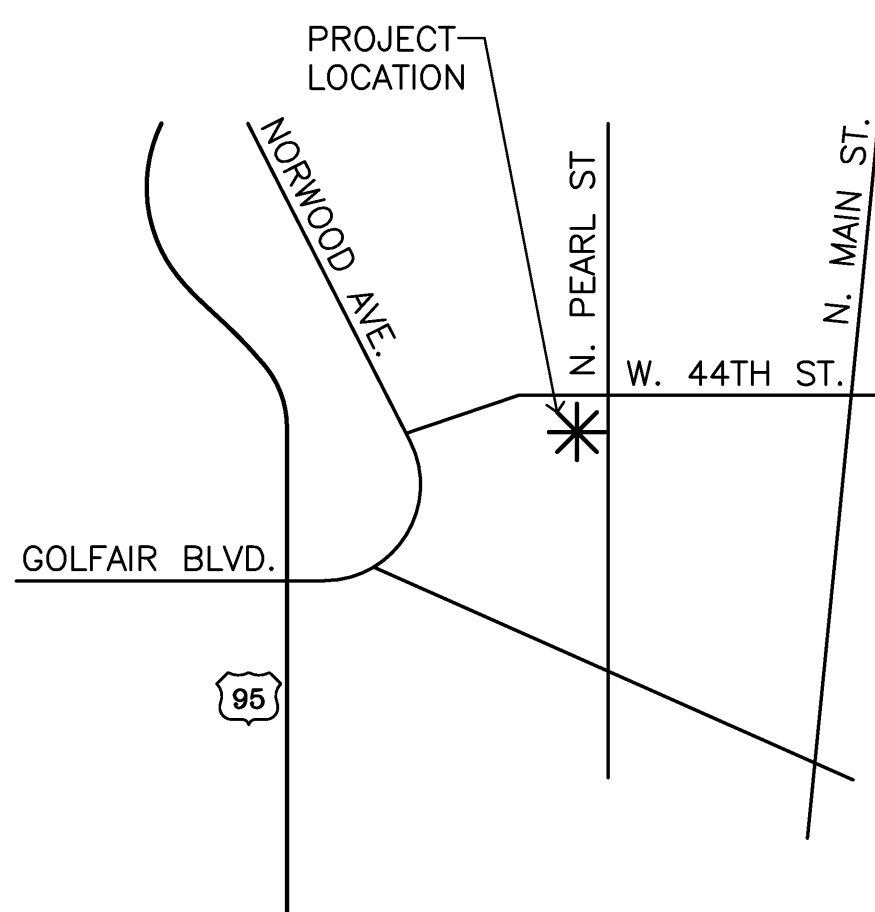
PROJECT NO: 09088  
DRAWN BY: JMM  
CHECKED BY: RTD  
SHEET NO:  
**T0.0**  
SHEET

## ABBREVIATIONS / SYMBOLS

AFF ABOVE FINISHED FLOOR	HW HARDWARE
ALUM ALUMINUM	INT INTERIOR
ARCH ARCHITECTURAL	JT JOINT
ACT ACOUSTICAL CEILING TILE	LB POUNDS
BD BOARD	MAINT MAINTENANCE
BLDG BUILDING	MAX MAXIMUM
CLG CEILING	MECH MECHANICAL
CJ CONTROL JOINT	MTL METAL
COL COLUMN	MIN MINIMUM
CONC CONCRETE	MISC MISCELLANEOUS
CONST CONSTRUCTION	MRGB MOISTURE RESISTANT GB
CPT CARPET	MS MARBLE SADDLE
CONT CONTINUOUS	N/A NOT APPLICABLE
CT CERAMIC TILE	NIC NOT IN CONTRACT
DTL DETAIL	NTS NOT TO SCALE
DIA DIAMETER	NO NUMBER
DIM DIMENSION	OC ON CENTER
DN DOWN	PLBG PLUMBING
DWG DRAWING	PLWD PLYWOOD
EA EACH	QT QUARY TILE
EL ELEVATION	R RADIUS
EQUIP EQUIPMENT	REQ REQUIRED
EXIST EXISTING	SCH SCHEDULE
FD FLOOR DRAIN	SF SQUARE FEET
FIN FINISH	SIM SIMILAR
FL FLOOR	SPEC SPECIFICATIONS
FT FOOT, FEET	STL STEEL
GL GLASS	TYP TYPICAL
GB GYPSUM WALL BOARD	UON UNLESS OTHERWISE NOTED
HT HEIGHT	W/ WITH
HR HOUR	WD WOOD

## VICINITY MAP

NOT TO SCALE



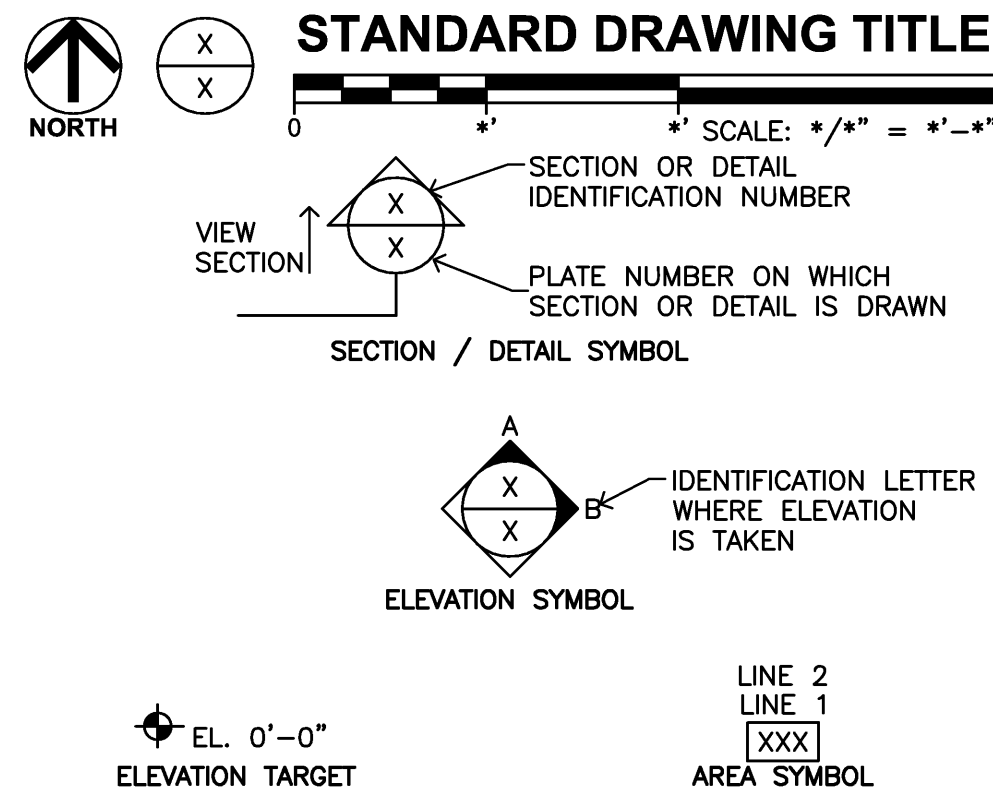
## PROJECT NARRATIVE

THIS PROJECT CONSISTS OF THE INTERIOR TENANT IMPROVEMENTS AND THE MINOR EXTERIOR RENOVATIONS TO AN APPROXIMATELY 5,100 SF FOOT SPACE. IN ADDITION TO THE ARCHITECTURAL REQUIREMENTS. THIS PACKAGE INCLUDES MECHANICAL, ELECTRICAL, PLUMBING AND STRUCTURAL ENGINEERING. GENERAL CONTRACTOR REQUIRED TO VISIT SITE AND PERFORM A COMPLETE WALK THRU OF THE PROJECT WITH HIS SUB TRADES PRIOR TO SUBMITTING BID. GC TO COORDINATE AND SCHEDULE ALL SITE VISIT WITH LANDLORD AND TENANT.

## SHEET INDEX

<u>ARCHITECTURAL DRAWINGS</u>	
T0.0	PROJECT INFORMATION / SHEET INDEX
A1.0	LIFE SAFETY PLAN / CODE SUMMARY / ADA REQUIREMENT
A1.1	EXISTING CONDITIONS PLAN
A1.2	DEMOLITION PLAN / NOTES
A1.3	CONSTRUCTION PLAN / EXTERIOR ELEVATIONS
A1.4	CONSTRUCTION NOTES / FINISH & DOOR SCHEDULE
A1.5	REFLECTED CEILING PLAN / NOTES
A2.0	PARTITION TYPES
A6.1	WINDOW AND DOOR DETAILS
A8.0	TOILET ACCESSORIES PLAN / INTERIOR ELEVATIONS
<u>STRUCTURAL DRAWINGS</u>	
S1.1	PARTIAL FOUNDATION AND FLOOR PLAN
S2.1	STRUCTURAL SECTIONS AND TYPICAL DETAILS
S5.1	GENERAL STRUCTURAL NOTES AND WIND PRESSURES
<u>MECHANICAL DRAWINGS</u>	
M1.1	MECHANICAL FLOOR PLANS AND SCHEDULES
M2.1	MECHANICAL DETAILS
<u>PLUMBING DRAWINGS</u>	
P1.1	PLUMBING FLOOR PLANS
P2.1	PLUMBING DETAILS AND SCHEDULE
<u>ELECTRICAL DRAWINGS</u>	
E1.0	LEGEND, DETAILS AND PANEL SCHEDULES
E2.1	ELECTRICAL LIGHTING PLAN
E2.2	ELECTRICAL POWER AND SYSTEMS PLAN

## SYMBOLS LEGEND

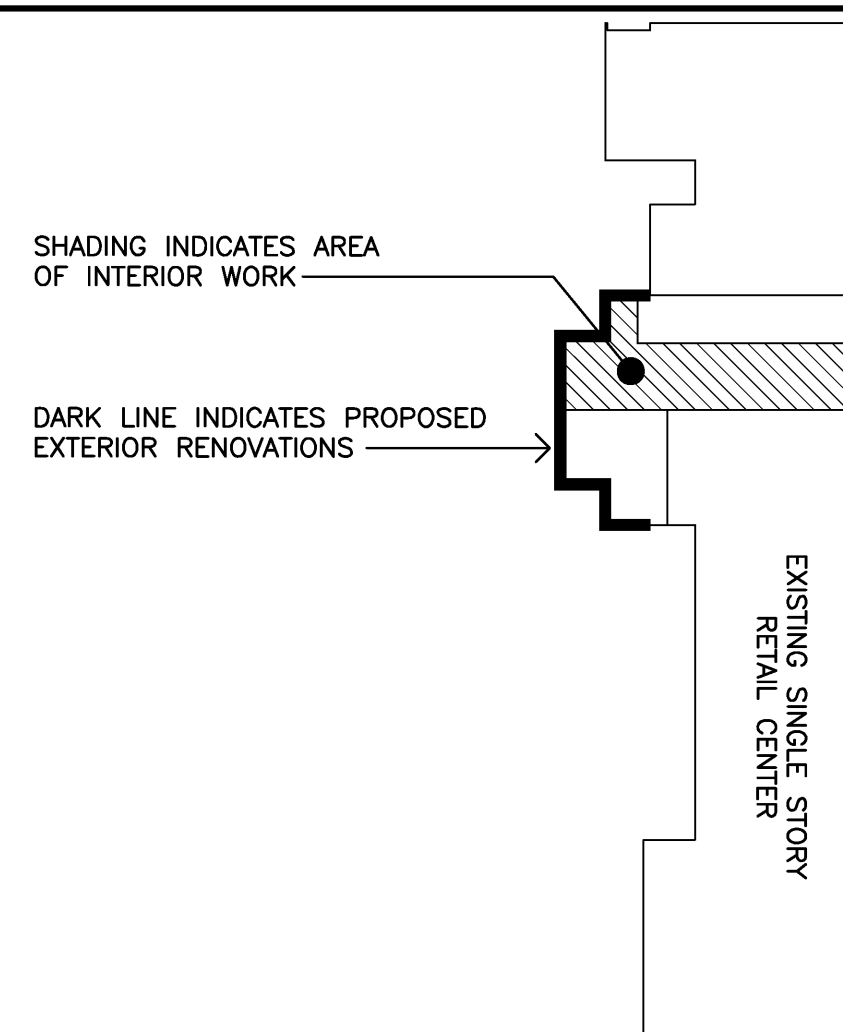


## MATERIAL LEGEND

	EARTH (COMPACTED FILL)
	GRAVEL
	CONCRETE
	MORTAR/CEMENT/ PLASTER/STUCCO
	INSULATION (LOOSE OR BATT)
	WOOD (BLOCKING)
	WOOD (FINISH)

## RETAIL CENTER KEY PLAN

NOT TO SCALE



Scopo Design Group, LLC, hereby expressly reserves the rights to this drawing and it is not to be reproduced or copied in any format or manner whatsoever without first obtaining permission and consent.